



7900 West Layton Avenue  
Denver, CO 80123



floorplan\_single\_1

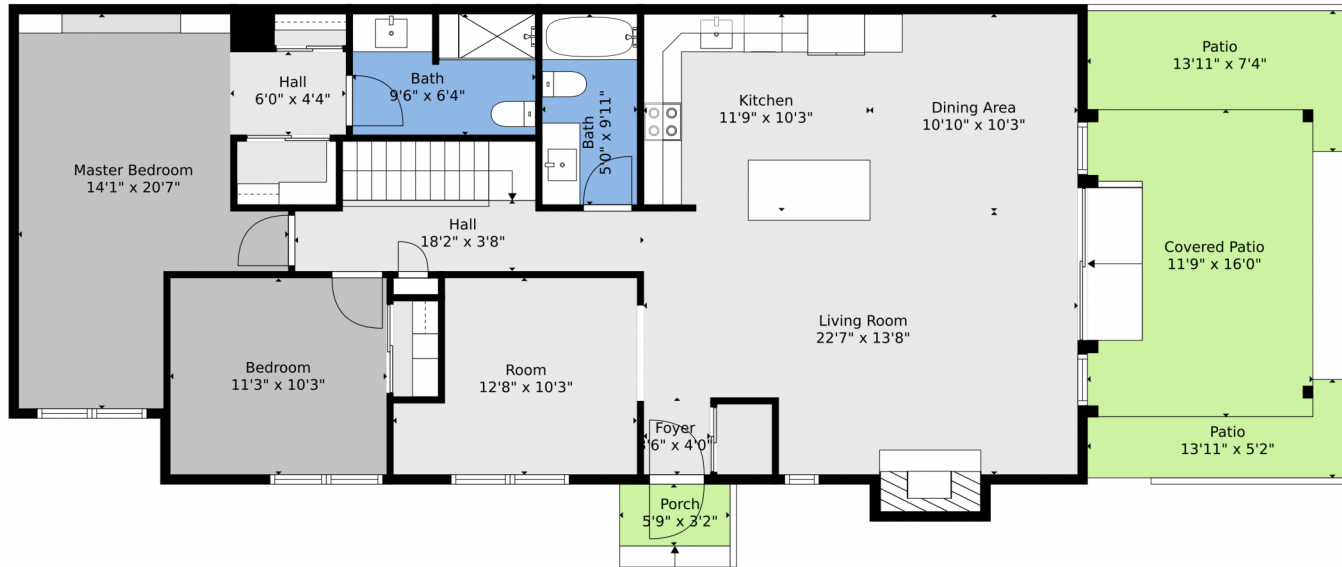


Townhouse 2415 SQFT



**Danielle Marcus**  
303-669-7974  
danielle@themarkusteam.com  
<https://www.themarkusteam.com>





**TOTAL: 1905 sq. ft**  
BELOW GROUND: 604 sq. ft, FLOOR 2: 1301 sq. ft  
EXCLUDED AREAS: STORAGE: 35 sq. ft, LAUNDRY: 93 sq. ft, PORCH: 19 sq. ft,  
PATIO: 124 sq. ft, COVERED PATIO: 187 sq. ft, FIREPLACE: 12 sq. ft

Floor Plan Created By V1photos.com, Measurements Deamed Highly Reliable But Not Guaranteed.



Disclaimer: Sizes and Dimensions are Approximate, Actual May Vary.



Danielle Marcus

303-669-7974

danielle@themarkusteam.com

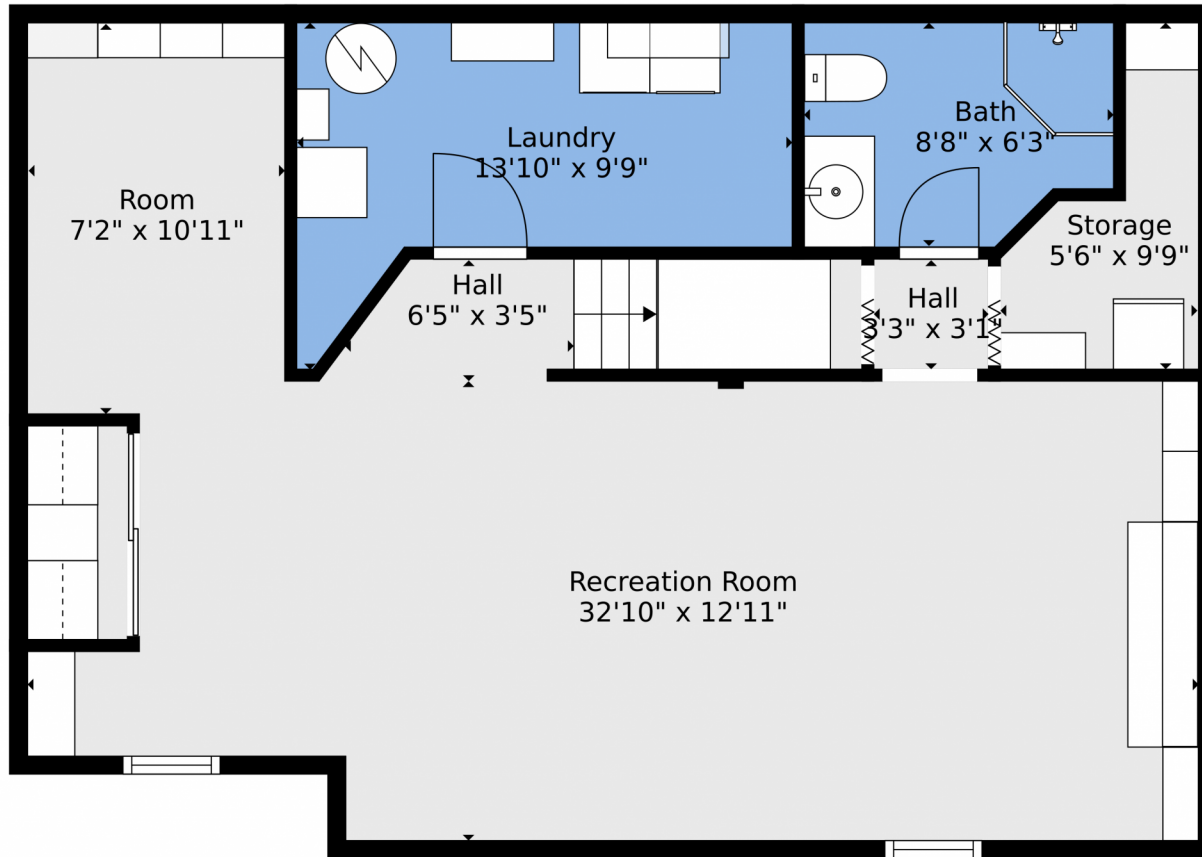
<https://www.themarkusteam.com>



Scan code  
for more  
property  
details



7900 West Layton Avenue, Denver, CO 80123 – Basement



**TOTAL: 1905 sq. ft**  
BELOW GROUND: 604 sq. ft, FLOOR 2: 1301 sq. ft  
EXCLUDED AREAS: STORAGE: 35 sq. ft, LAUNDRY: 93 sq. ft, PORCH: 19 sq. ft,  
PATIO: 124 sq. ft, COVERED PATIO: 187 sq. ft, FIREPLACE: 12 sq. ft  
Floor Plan Created By V1photos.com, Measurements Deamed Highly Reliable But Not Guaranteed.



Disclaimer: Sizes and Dimensions are Approximate, Actual May Vary.



**Danielle Marcus**  
303-669-7974  
danielle@themarkusteam.com  
<https://www.themarkusteam.com>



# 7900 West Layton Avenue, Denver, CO 80123 – All Levels



**TOTAL: 1905 sq. ft**  
BELOW GROUND: 604 sq. ft, FLOOR 2: 1301 sq. ft  
EXCLUDED AREAS: STORAGE: 35 sq. ft, LAUNDRY: 93 sq. ft, PORCH: 19 sq. ft,  
PATIO: 124 sq. ft, COVERED PATIO: 187 sq. ft, FIREPLACE: 12 sq. ft

Floor Plan Created By V1photos.com, Measurements Deemed Highly Reliable But Not Guaranteed.



Disclaimer: Sizes and Dimensions are Approximate, Actual May Vary.



**Danielle Marcus**  
303-669-7974  
danielle@themarcusteam.com  
<https://www.themarcusteam.com>

