

2226 Judson Street
Longmont, CO 80501



floorplan_single_0




 Single Family  3568 SQFT

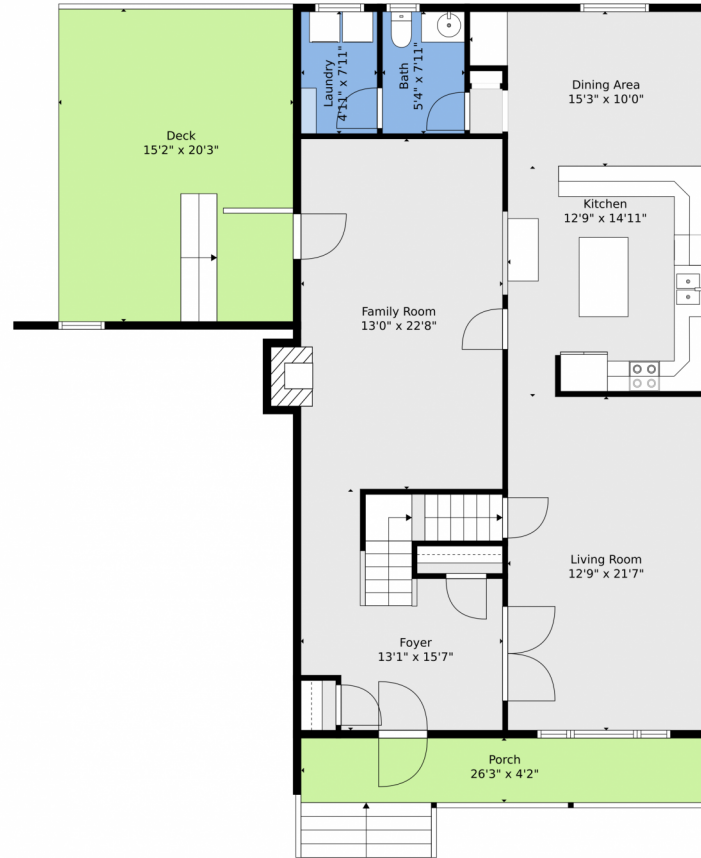


Jo Klimecki
720-249-7453
jodi@ccpnoco.com

Scan code for more property details



2226 Judson Street, Longmont, CO 80501 – Main Level



TOTAL: 3140 sq. ft
BELOW GROUND: 1119 sq. ft, FLOOR 2: 1220 sq. ft, FLOOR 3: 801 sq. ft
EXCLUDED AREAS: ELECTRICAL ROOM: 61 sq. ft, PORCH: 110 sq. ft, DECK: 306 sq. ft,
FIREPLACE: 9 sq. ft, OPEN TO BELOW: 360 sq. ft

Floor Plan Created By V1photos.com, Measurements Deamed Highly Reliable But Not Guaranteed.



Disclaimer: Sizes and Dimensions are Approximate, Actual May Vary.



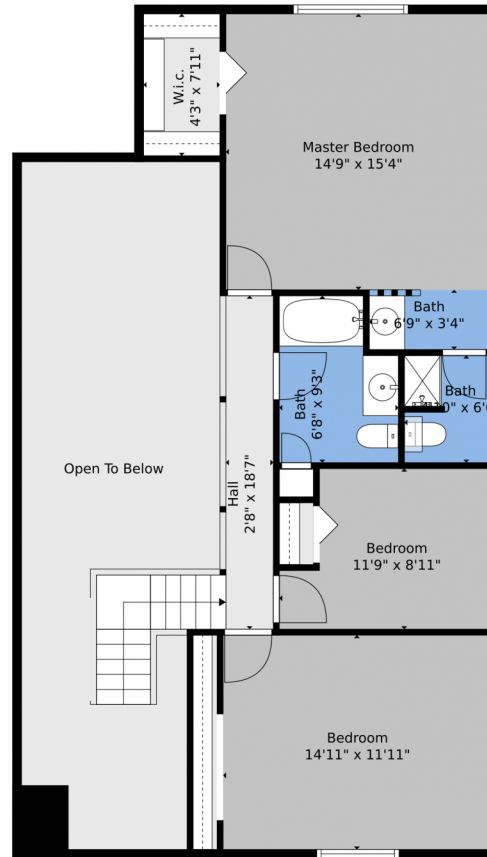
Jo Klimecki
720-249-7453
jodi@ccpnoco.com



Scan code
for more
property
details



2226 Judson Street, Longmont, CO 80501 – Upper Level



TOTAL: 3140 sq. ft
BELOW GROUND: 1119 sq. ft, FLOOR 2: 1220 sq. ft, FLOOR 3: 801 sq. ft
EXCLUDED AREAS: ELECTRICAL ROOM: 61 sq. ft, PORCH: 110 sq. ft, DECK: 306 sq. ft,
FIREPLACE: 9 sq. ft, OPEN TO BELOW: 360 sq. ft

Floor Plan Created By V1photos.com, Measurements Deamed Highly Reliable But Not Guaranteed.



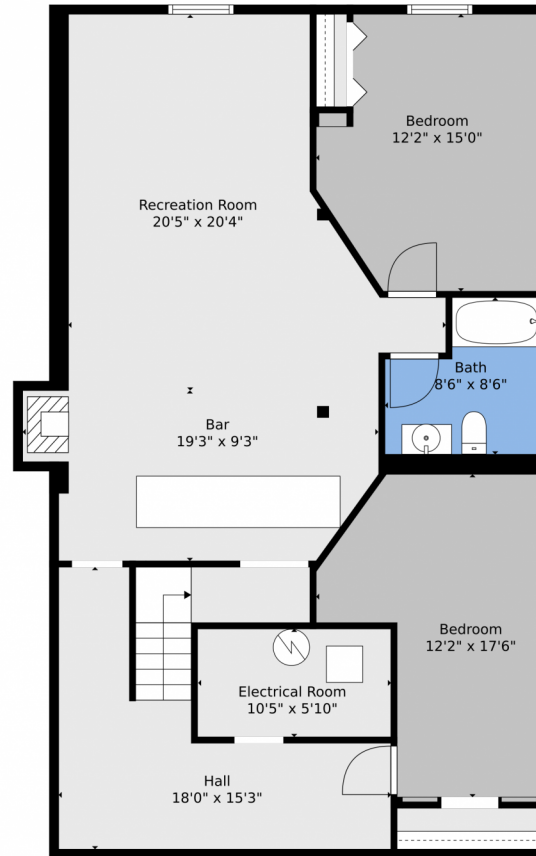
Disclaimer: Sizes and Dimensions are Approximate, Actual May Vary.



Jo Klimecki
720-249-7453
jodi@ccpnoco.com



2226 Judson Street, Longmont, CO 80501 – Lower Level



TOTAL: 3140 sq. ft
BELOW GROUND: 1119 sq. ft, FLOOR 2: 1220 sq. ft, FLOOR 3: 801 sq. ft
EXCLUDED AREAS: ELECTRICAL ROOM: 61 sq. ft, PORCH: 110 sq. ft, DECK: 306 sq. ft,
FIREPLACE: 9 sq. ft, OPEN TO BELOW: 360 sq. ft

Floor Plan Created By V1photos.com, Measurements Deamed Highly Reliable But Not Guaranteed.



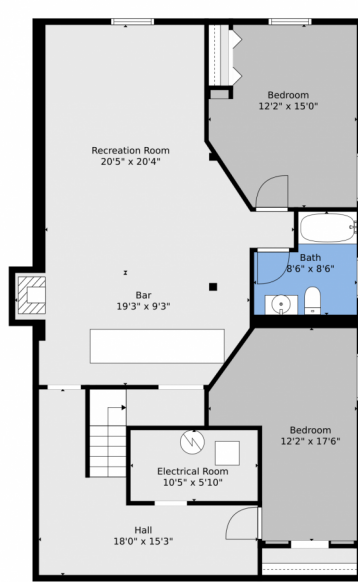
Disclaimer: Sizes and Dimensions are Approximate, Actual May Vary.



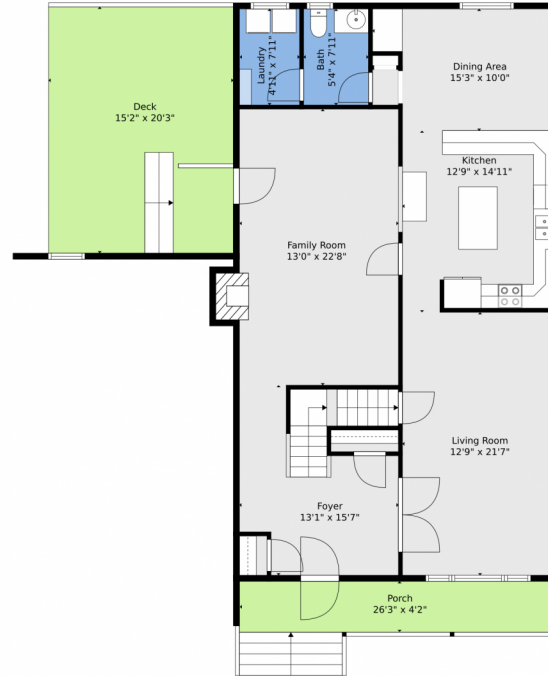
Jo Klimecki
720-249-7453
jodi@ccpnoco.com



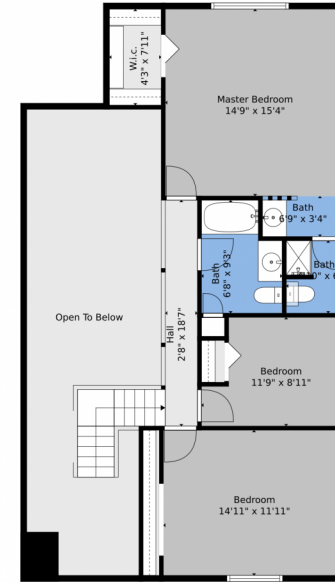
2226 Judson Street, Longmont, CO 80501 – All Levels



Floor 1



Floor 2



Floor 3

TOTAL: 3140 sq. ft
BELOW GROUND: 1119 sq. ft, FLOOR 2: 1220 sq. ft, FLOOR 3: 801 sq. ft
EXCLUDED AREAS: ELECTRICAL ROOM: 61 sq. ft, PORCH: 110 sq. ft, DECK: 306 sq. ft,
FIREPLACE: 9 sq. ft, OPEN TO BELOW: 360 sq. ft

Floor Plan Created By V1photos.com, Measurements Deamed Highly Reliable But Not Guaranteed.



Disclaimer: Sizes and Dimensions are Approximate, Actual May Vary.



Jo Klimecki
720-249-7453
jodi@ccpnoco.com



Scan code
for more
property
details