
 Single Family

 1468 SQFT

 3 Beds

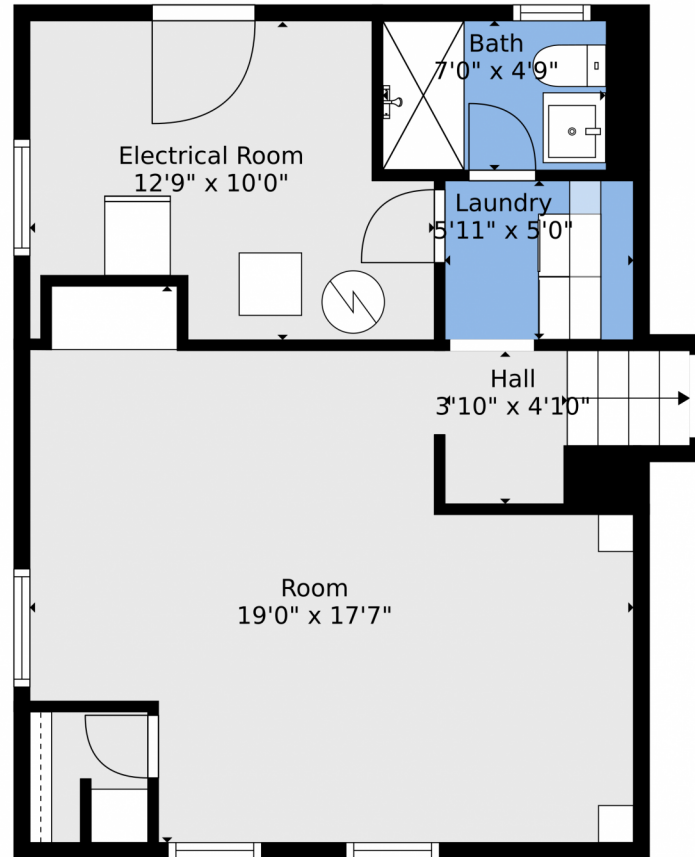
 1/1 Baths



Taylor Haas
 303-665-7368
 taylorh@coloradorpm.com
<https://www.coloradorpm.com/available-rental-properties-denver>



2923 Hayman Terrace, Colorado Springs, CO 80910 – Lower Level



TOTAL: 1420 sq. ft
BELOW GROUND: 387 sq. ft, FLOOR 2: 486 sq. ft, FLOOR 3: 547 sq. ft
EXCLUDED AREAS: ELECTRICAL ROOM: 109 sq. ft, PORCH: 140 sq. ft, COVERED PATIO: 192 sq. ft,
PATIO: 39 sq. ft, BAY WINDOW: 9 sq. ft

Floor Plan Created By V1photos.com, Measurements Deamed Highly Reliable But Not Guaranteed.



Disclaimer: Sizes and Dimensions are Approximate, Actual May Vary.



Taylor Haas
303-665-7368
taylorh@coloradorpm.com
<https://www.coloradorpm.com/available-rental-properties-denver>



Scan code
for more
property
details



2923 Hayman Terrace, Colorado Springs, CO 80910 – Main



TOTAL: 1420 sq. ft
BELOW GROUND: 387 sq. ft, FLOOR 2: 486 sq. ft, FLOOR 3: 547 sq. ft
EXCLUDED AREAS: ELECTRICAL ROOM: 109 sq. ft, PORCH: 140 sq. ft, COVERED PATIO: 192 sq. ft,
PATIO: 39 sq. ft, BAY WINDOW: 9 sq. ft

Floor Plan Created By V1photos.com, Measurements Deamed Highly Reliable But Not Guaranteed.



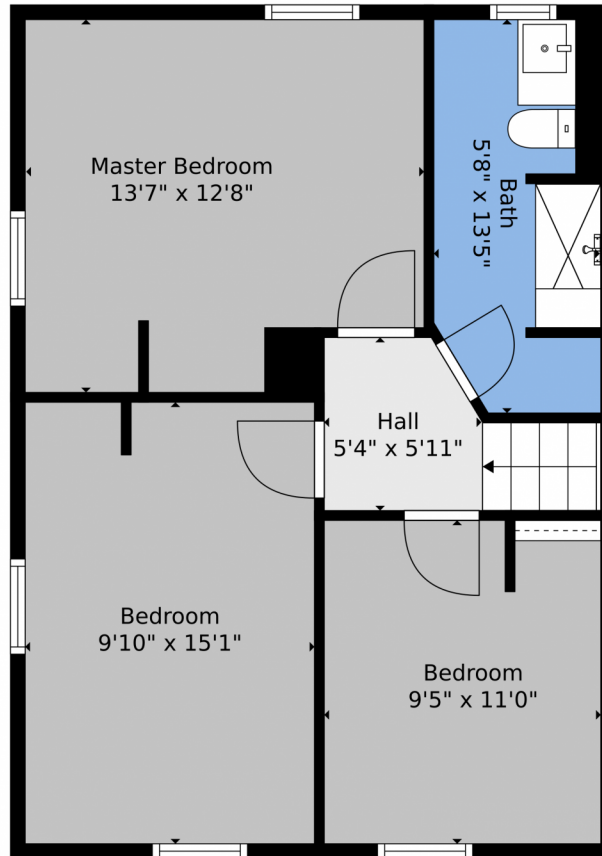
Disclaimer: Sizes and Dimensions are Approximate, Actual May Vary.



Taylor Haas
303-665-7368
taylorh@coloradorpm.com
<https://www.coloradorpm.com/available-rental-properties-denver>



2923 Hayman Terrace, Colorado Springs, CO 80910 – 2nd Level



TOTAL: 1420 sq. ft
BELOW GROUND: 387 sq. ft, FLOOR 2: 486 sq. ft, FLOOR 3: 547 sq. ft
EXCLUDED AREAS: ELECTRICAL ROOM: 109 sq. ft, PORCH: 140 sq. ft, COVERED PATIO: 192 sq. ft,
PATIO: 39 sq. ft, BAY WINDOW: 9 sq. ft

Floor Plan Created By V1photos.com, Measurements Deamed Highly Reliable But Not Guaranteed.



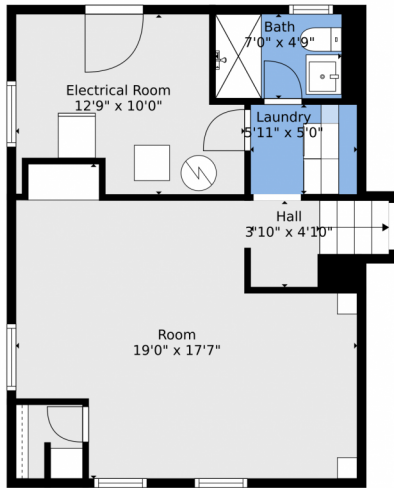
Disclaimer: Sizes and Dimensions are Approximate, Actual May Vary.



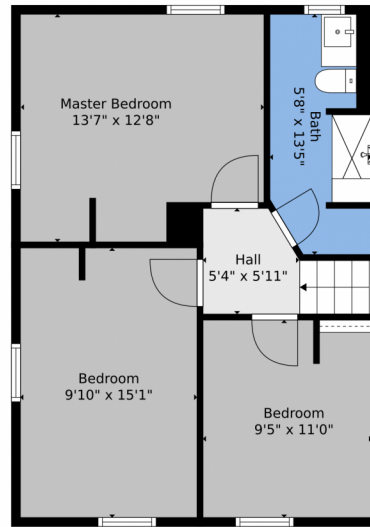
Taylor Haas
303-665-7368
taylorh@coloradorpm.com
<https://www.coloradorpm.com/available-rental-properties-denver>



2923 Hayman Terrace, Colorado Springs, CO 80910 – All Levels



Floor 1



Floor 3



Floor 2

TOTAL: 1420 sq. ft
BELOW GROUND: 387 sq. ft, FLOOR 2: 486 sq. ft, FLOOR 3: 547 sq. ft
EXCLUDED AREAS: ELECTRICAL ROOM: 109 sq. ft, PORCH: 140 sq. ft, COVERED PATIO: 192 sq. ft,
PATIO: 39 sq. ft, BAY WINDOW: 9 sq. ft

Floor Plan Created By V1photos.com. Measurements Deamed Highly Reliable But Not Guaranteed.



Disclaimer: Sizes and Dimensions are Approximate, Actual May Vary.



Taylor Haas

303-665-7368

taylorh@coloradorpm.com

<https://www.coloradorpm.com/available-rental-properties-denver>



Scan code
for more
property
details

