


 Single Family

 2440 SQFT

 4 Beds

 2 Baths



Taylor Haas
303-665-7368
taylorh@coloradorpm.com
<https://www.coloradorpm.com/available-rental-properties-denv>





TOTAL: 1741 sq. ft
BELOW GROUND: 35 sq. ft, FLOOR 2: 589 sq. ft, FLOOR 3: 573 sq. ft, FLOOR 4: 544 sq. ft
EXCLUDED AREAS: BASEMENT: 521 sq. ft, GARAGE: 235 sq. ft, COVERED PATIO: 274 sq. ft,
PORCH: 41 sq. ft, FIREPLACE: 10 sq. ft

Floor Plan Created By V1photos.com, Measurements Deamed Highly Reliable But Not Guaranteed.

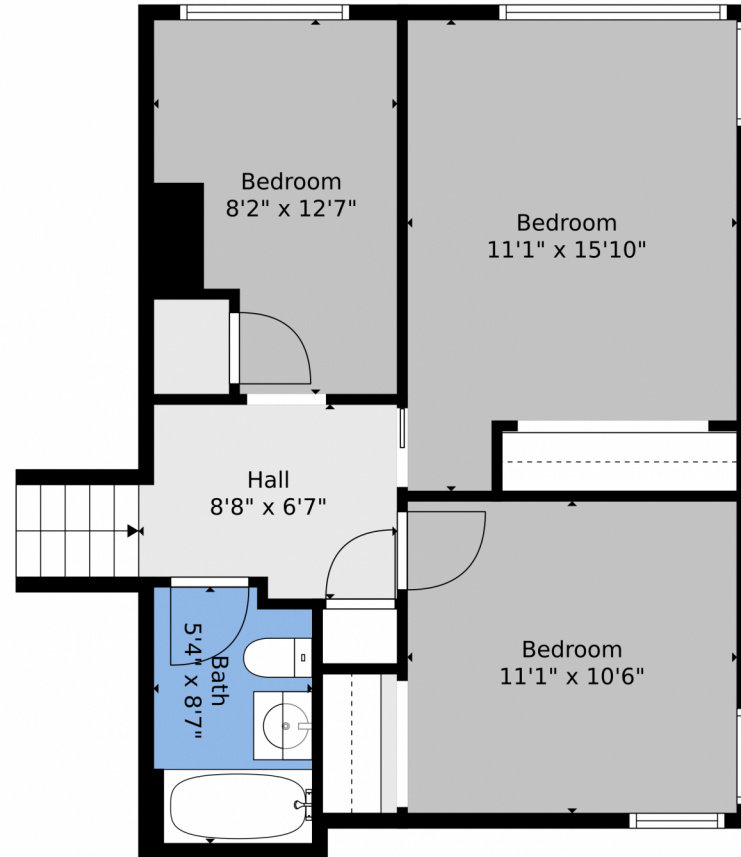


Disclaimer: Sizes and Dimensions are Approximate, Actual May Vary.



Taylor Haas
303-665-7368
taylorh@coloradorpm.com
<https://www.coloradorpm.com/available-rental-properties-denv>





TOTAL: 1741 sq. ft
BELOW GROUND: 35 sq. ft, FLOOR 2: 589 sq. ft, FLOOR 3: 573 sq. ft, FLOOR 4: 544 sq. ft
EXCLUDED AREAS: BASEMENT: 521 sq. ft, GARAGE: 235 sq. ft, COVERED PATIO: 274 sq. ft,
PORCH: 41 sq. ft, FIREPLACE: 10 sq. ft

Floor Plan Created By V1photos.com, Measurements Deamed Highly Reliable But Not Guaranteed.



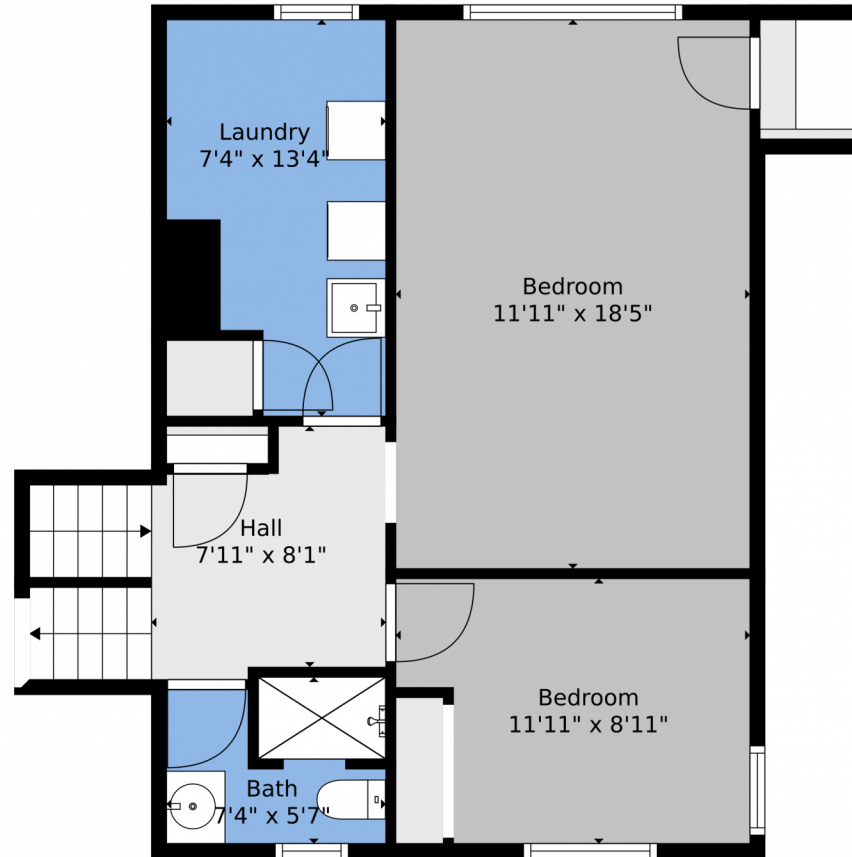
Disclaimer: Sizes and Dimensions are Approximate, Actual May Vary.



Taylor Haas
303-665-7368
taylorh@coloradorpm.com
<https://www.coloradorpm.com/available-rental-properties-denver>



2853 Glencoe Street, Denver, CO 80207 – Lower Level



TOTAL: 1741 sq. ft
BELOW GROUND: 35 sq. ft, FLOOR 2: 589 sq. ft, FLOOR 3: 573 sq. ft, FLOOR 4: 544 sq. ft
EXCLUDED AREAS: BASEMENT: 521 sq. ft, GARAGE: 235 sq. ft, COVERED PATIO: 274 sq. ft,
PORCH: 41 sq. ft, FIREPLACE: 10 sq. ft

Floor Plan Created By V1photos.com, Measurements Deamed Highly Reliable But Not Guaranteed.

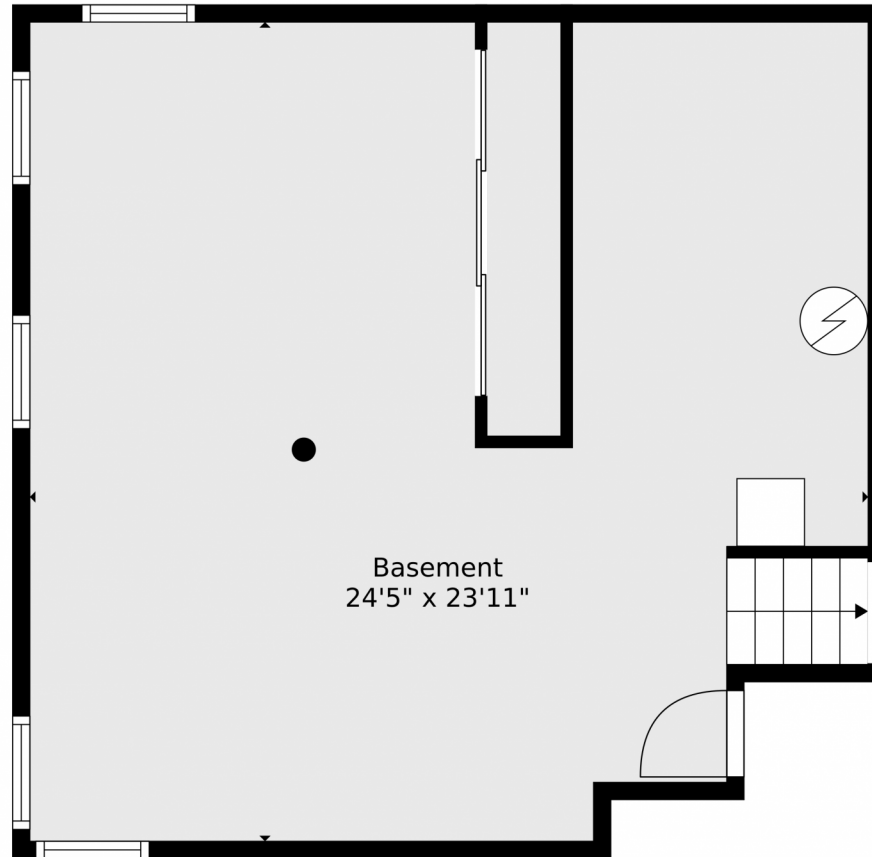


Disclaimer: Sizes and Dimensions are Approximate, Actual May Vary.



Taylor Haas
303-665-7368
taylorh@coloradorpm.com
<https://www.coloradorpm.com/available-rental-properties-denver>





Basement
24'5" x 23'11"

TOTAL: 1741 sq. ft
BELOW GROUND: 35 sq. ft, FLOOR 2: 589 sq. ft, FLOOR 3: 573 sq. ft, FLOOR 4: 544 sq. ft
EXCLUDED AREAS: BASEMENT: 521 sq. ft, GARAGE: 235 sq. ft, COVERED PATIO: 274 sq. ft,
PORCH: 41 sq. ft, FIREPLACE: 10 sq. ft

Floor Plan Created By V1photos.com, Measurements Deamed Highly Reliable But Not Guaranteed.



Disclaimer: Sizes and Dimensions are Approximate, Actual May Vary.



Taylor Haas
303-665-7368
taylorh@coloradorpm.com
<https://www.coloradorpm.com/available-rental-properties-denver>



2853 Glencoe Street, Denver, CO 80207 – All Levels



TOTAL: 1741 sq. ft
BELOW GROUND: 35 sq. ft, FLOOR 2: 589 sq. ft, FLOOR 3: 573 sq. ft, FLOOR 4: 544 sq. ft
EXCLUDED AREAS: BASEMENT: 521 sq. ft, GARAGE: 235 sq. ft, COVERED PATIO: 274 sq. ft,
PORCH: 41 sq. ft, FIREPLACE: 10 sq. ft

Floor Plan Created By V1photos.com, Measurements Deamed Highly Reliable But Not Guaranteed.



Disclaimer: Sizes and Dimensions are Approximate, Actual May Vary.



Taylor Haas
303-665-7368
taylorh@coloradorm.com
<https://www.coloradorm.com/available-rental-properties-denver>



Scan code
for more
property
details

