



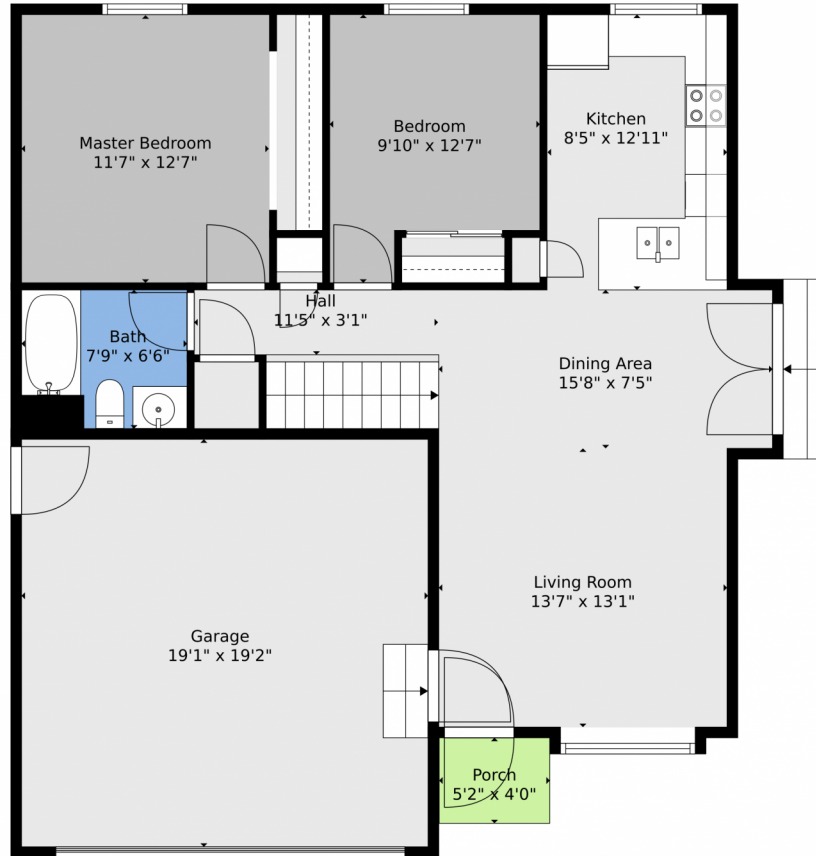
 Single Family  1404 SQFT



Taylor Haas
303-665-7368
taylorh@coloradorpm.com
<https://www.coloradorpm.com/available-rental-properties-denver>



12708 Julian Ct, Broomfield, CO 80020 – Main Level



TOTAL: 1316 sq. ft
BELOW GROUND: 465 sq. ft, FLOOR 2: 851 sq. ft
EXCLUDED AREAS: UTILITY: 83 sq. ft, GARAGE: 365 sq. ft, PORCH: 21 sq. ft,
BAY WINDOW: 6 sq. ft

Floor Plan Created By V1photos.com, Measurements Deamed Highly Reliable But Not Guaranteed.



Disclaimer: Sizes and Dimensions are Approximate, Actual May Vary.

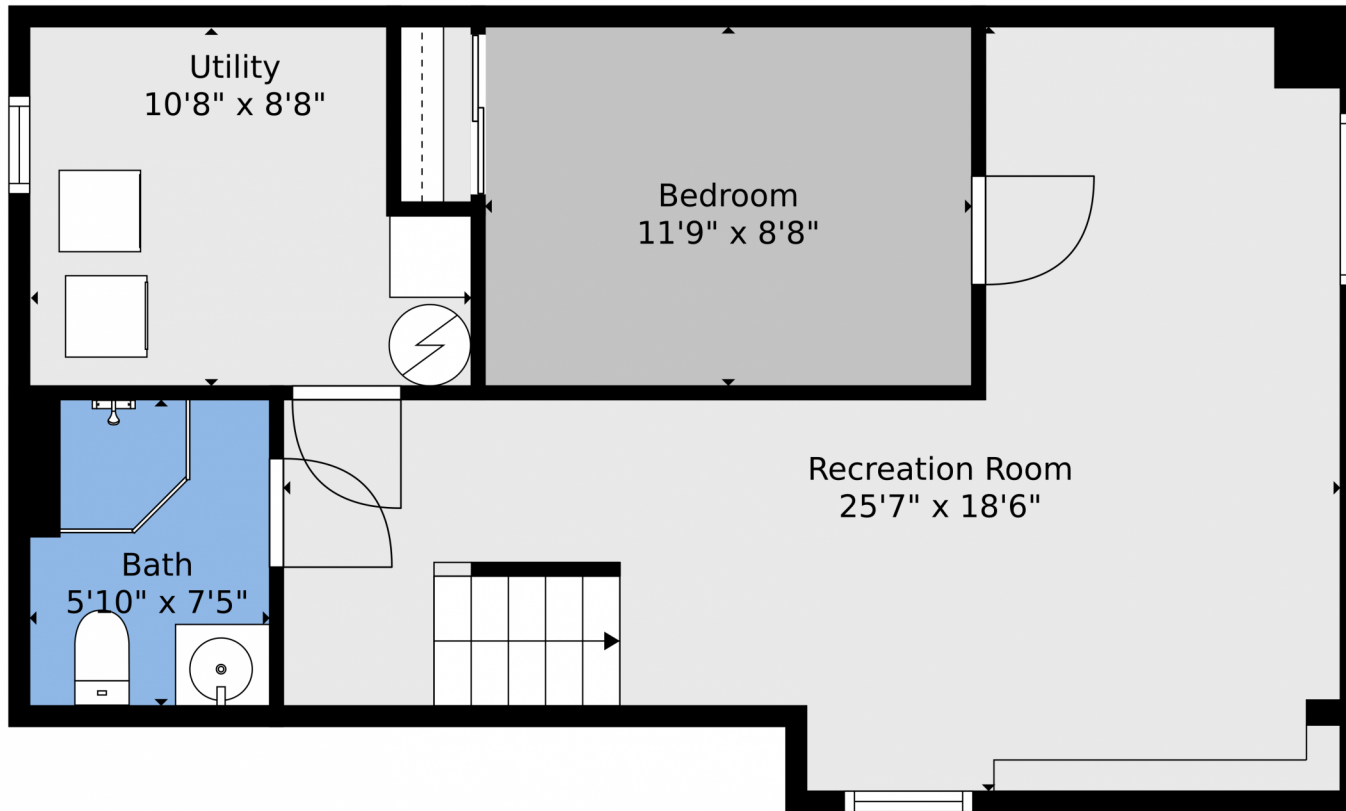


Taylor Haas
303-665-7368
taylorh@coloradorpm.com
<https://www.coloradorpm.com/available-rental-properties-denver>



Scan code
for more
property
details





TOTAL: 1316 sq. ft
BELOW GROUND: 465 sq. ft, FLOOR 2: 851 sq. ft
EXCLUDED AREAS: UTILITY: 83 sq. ft, GARAGE: 365 sq. ft, PORCH: 21 sq. ft,
BAY WINDOW: 6 sq. ft

Floor Plan Created By V1photos.com, Measurements Deamed Highly Reliable But Not Guaranteed.

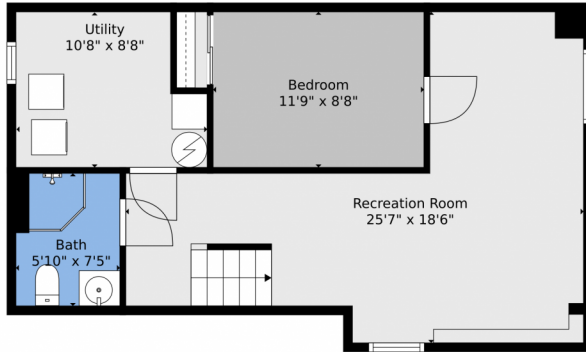
Disclaimer: Sizes and Dimensions are Approximate, Actual May Vary.



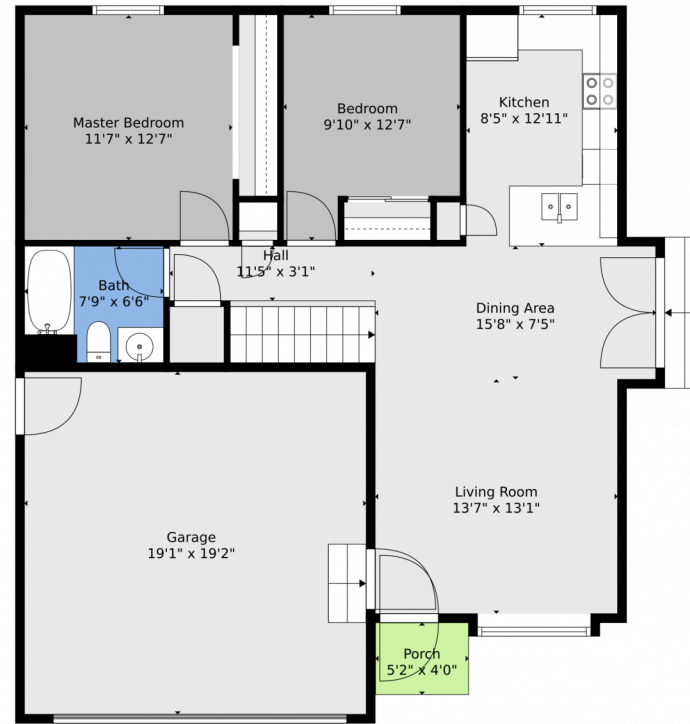
Taylor Haas
303-665-7368
taylorh@coloradorpm.com
<https://www.coloradorpm.com/available-rental-properties-denver>



12708 Julian Ct, Broomfield, CO 80020 – All Levels



Floor 1



Floor 2

TOTAL: 1316 sq. ft
BELOW GROUND: 465 sq. ft, FLOOR 2: 851 sq. ft
EXCLUDED AREAS: UTILITY: 83 sq. ft, GARAGE: 365 sq. ft, PORCH: 21 sq. ft,
BAY WINDOW: 6 sq. ft

Floor Plan Created By V1photos.com, Measurements Deamed Highly Reliable But Not Guaranteed.



Disclaimer: Sizes and Dimensions are Approximate, Actual May Vary.



Taylor Haas

303-665-7368

taylorh@coloradorpm.com

<https://www.coloradorpm.com/available-rental-properties-denver>



Scan code
for more
property
details

