



113 C Palm Point Circle  
 Palm Beach Gardens, FL 33418  
 COMMUNITY: Palm Point at BallenIsles



Condominium



2492 SQFT



4 Beds



3 Baths



2 Car

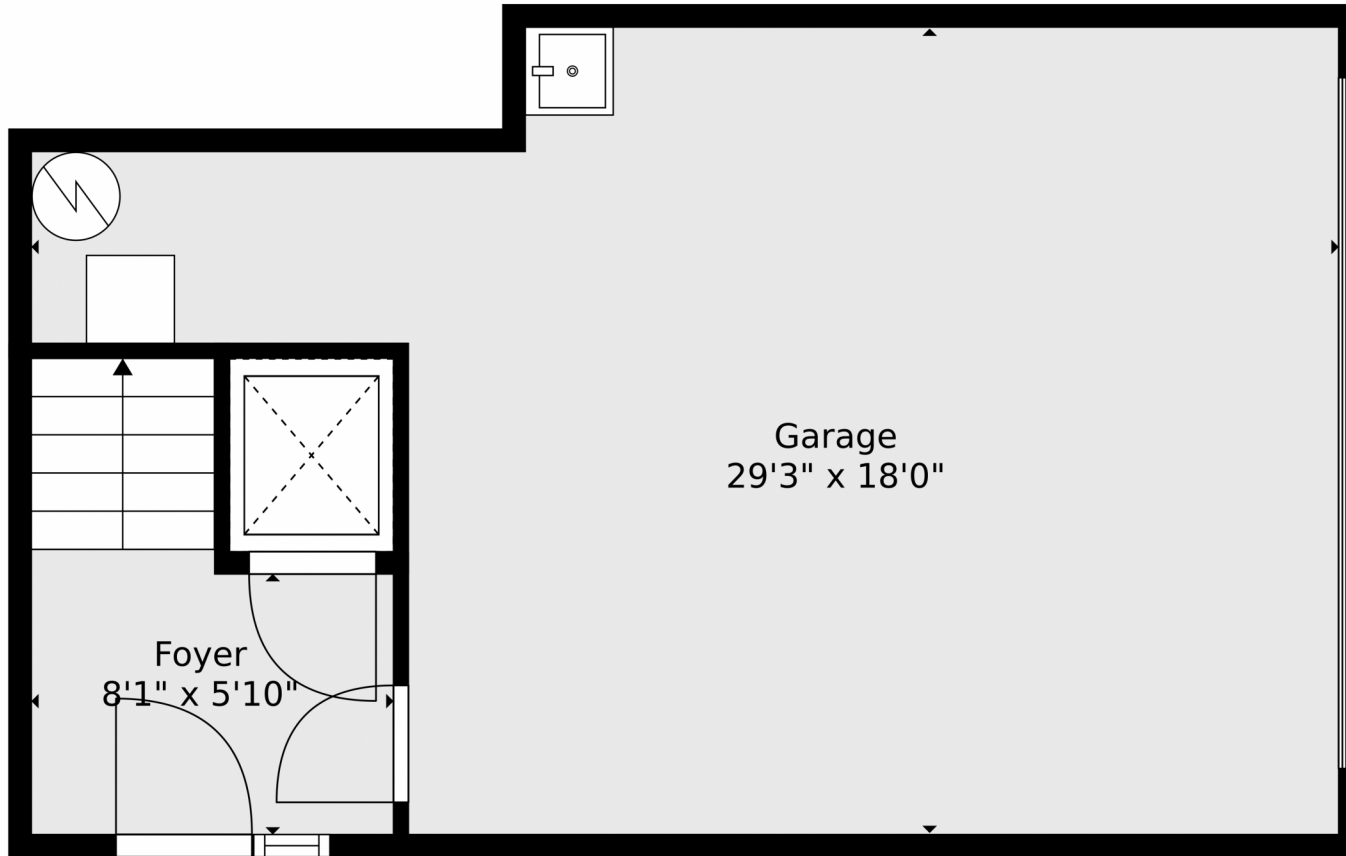


**Darren Goldstein Ron Bill**  
 561-262-0730  
 rb@exceptionalpropertiesfl.com



Scan code  
 for more  
 property  
 details





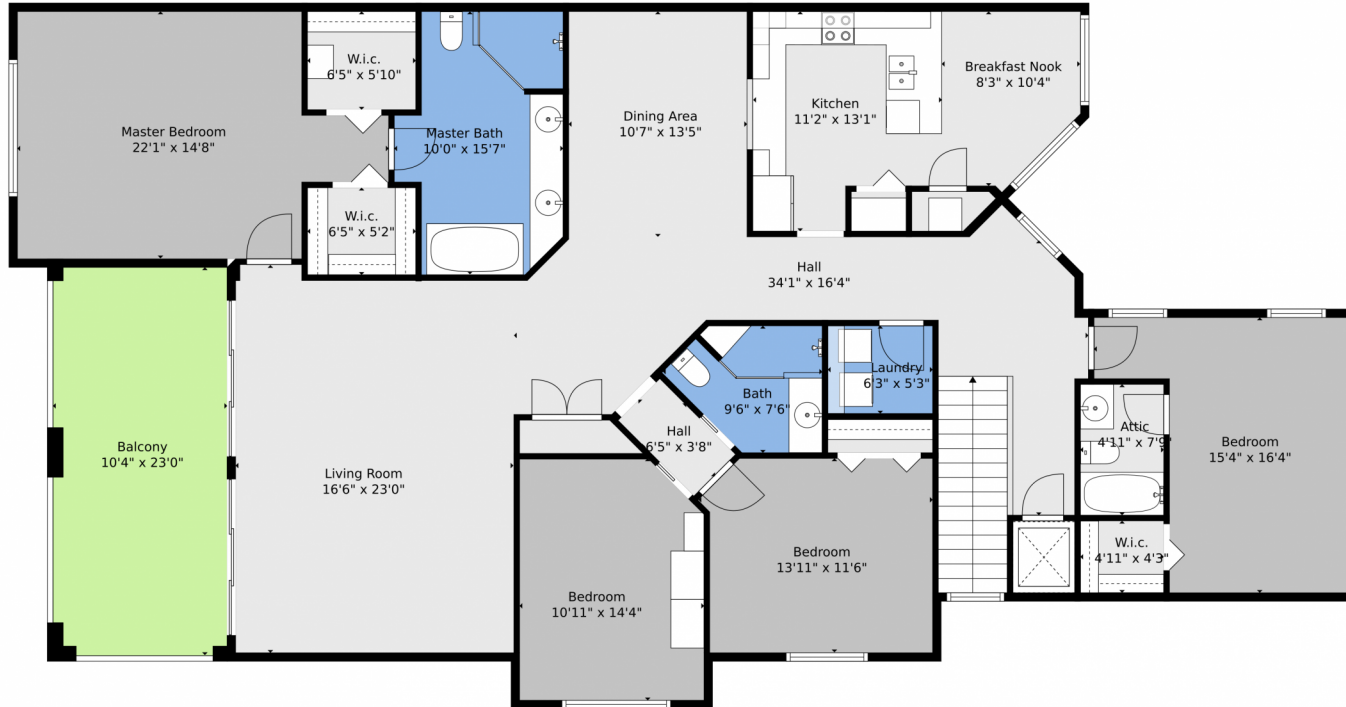
**TOTAL: 2389 sq. ft**  
BELOW GROUND: 87 sq. ft, FLOOR 2: 2302 sq. ft  
EXCLUDED AREAS: GARAGE: 405 sq. ft, ATTIC: 39 sq. ft, BALCONY: 234 sq. ft  
Floor Plan Created By V1photos.com, Measurements Deamed Highly Reliable But Not Guaranteed.

Disclaimer: Sizes and Dimensions are Approximate, Actual May Vary.



**Darren Goldstein Ron Bill**  
561-262-0730  
rb@exceptionalpropertiesfl.com





**TOTAL: 2389 sq. ft**  
BELOW GROUND: 87 sq. ft, FLOOR 2: 2302 sq. ft  
EXCLUDED AREAS: GARAGE: 405 sq. ft, ATTIC: 39 sq. ft, BALCONY: 234 sq. ft  
Floor Plan Created By V1photos.com, Measurements Deamed Highly Reliable But Not Guaranteed.



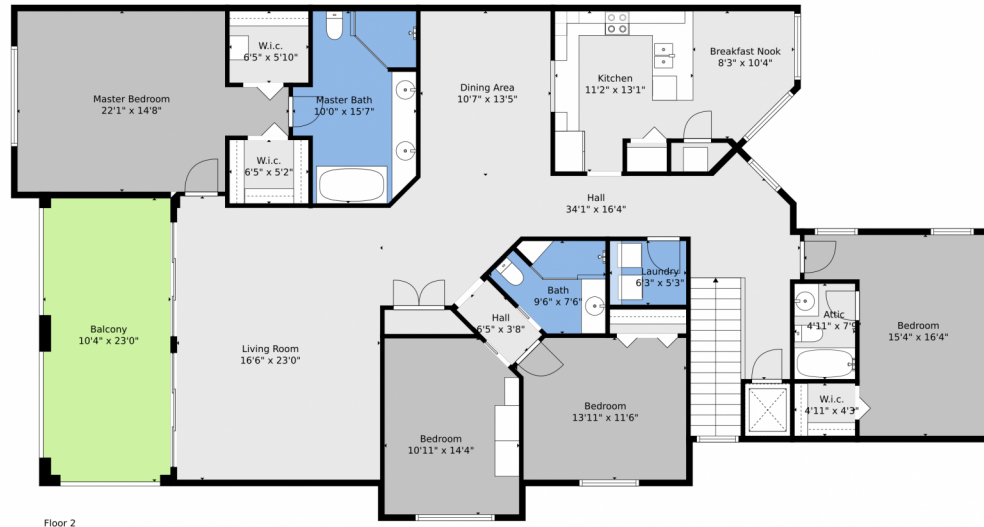
Disclaimer: Sizes and Dimensions are Approximate, Actual May Vary.



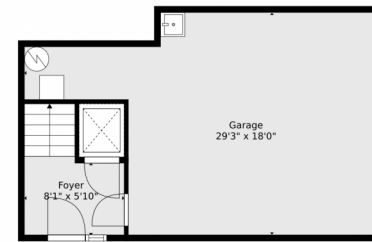
**Darren Goldstein Ron Bill**  
561-262-0730  
rb@exceptionalpropertiesfl.com



# 113 C Palm Point Circle, Palm Beach Gardens, FL 33418 – floorplan\_all\_0



Floor 2



Floor 1

**TOTAL: 2389 sq. ft**  
BELOW GROUND: 87 sq. ft, FLOOR 2: 2302 sq. ft  
EXCLUDED AREAS: GARAGE: 405 sq. ft, ATTIC: 39 sq. ft, BALCONY: 234 sq. ft  
Floor Plan Created By V1photos.com, Measurements Deamed Highly Reliable But Not Guaranteed.



Disclaimer: Sizes and Dimensions are Approximate, Actual May Vary.



**Darren Goldstein Ron Bill**  
561-262-0730  
rb@exceptionalpropertiesfl.com

