


6909 South Clermont Street
Centennial, CO 80122
COMMUNITY: Nob Hill 1st Flag



 Single Family

 3172 SQFT

 6 Beds

 4 Baths

 0.35 Acre



Kifle Leulseged
720-891-6979
kleulseged@gmail.com



6909 South Clermont Street, Centennial, CO 80122 – Main



TOTAL: 2880 sq. ft
BELOW GROUND: 1281 sq. ft, FLOOR 2: 1599 sq. ft
EXCLUDED AREAS: GARAGE: 485 sq. ft, STORAGE: 164 sq. ft, SHED: 124 sq. ft,
PATIO: 441 sq. ft, PORCH: 53 sq. ft, BAY WINDOW: 11 sq. ft

Floor Plan Created By V1photos.com, Measurements Deamed Highly Reliable But Not Guaranteed.



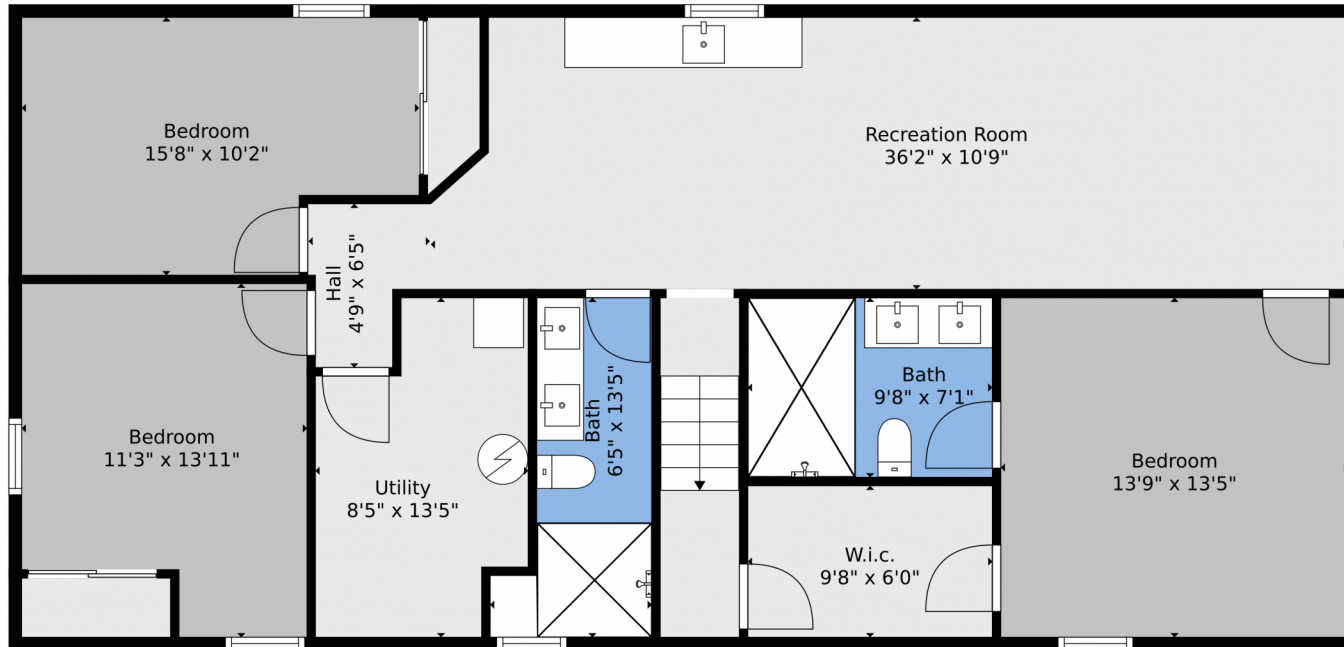
Disclaimer: Sizes and Dimensions are Approximate, Actual May Vary.



Kifle Leulseged
720-891-6979
kleulseged@gmail.com



6909 South Clermont Street, Centennial, CO 80122 – Lower Level



TOTAL: 2880 sq. ft
BELOW GROUND: 1281 sq. ft, FLOOR 2: 1599 sq. ft
EXCLUDED AREAS: GARAGE: 485 sq. ft, STORAGE: 164 sq. ft, SHED: 124 sq. ft,
PATIO: 441 sq. ft, PORCH: 53 sq. ft, BAY WINDOW: 11 sq. ft

Floor Plan Created By V1photos.com, Measurements Deamed Highly Reliable But Not Guaranteed.



Disclaimer: Sizes and Dimensions are Approximate, Actual May Vary.



Kifle Leulseged
720-891-6979
kleulseged@gmail.com



6909 South Clermont Street, Centennial, CO 80122 – All Levels



TOTAL: 2880 sq. ft
BELOW GROUND: 1281 sq. ft, FLOOR 2: 1599 sq. ft
EXCLUDED AREAS: GARAGE: 485 sq. ft, STORAGE: 164 sq. ft, SHED: 124 sq. ft,
PATIO: 441 sq. ft, PORCH: 53 sq. ft, BAY WINDOW: 11 sq. ft

Floor Plan Created By V1photos.com, Measurements Deamed Highly Reliable But Not Guaranteed.



Disclaimer: Sizes and Dimensions are Approximate, Actual May Vary.



Kifle Leulseged
720-891-6979
kleulseged@gmail.com

