



167 Southwest Tulip Boulevard
Port St. Lucie, FL 34953



Single Family



912 SQFT



2 Beds



1 Baths



1 Car



0.23 Acre



Jason M Coley

772-201-5229

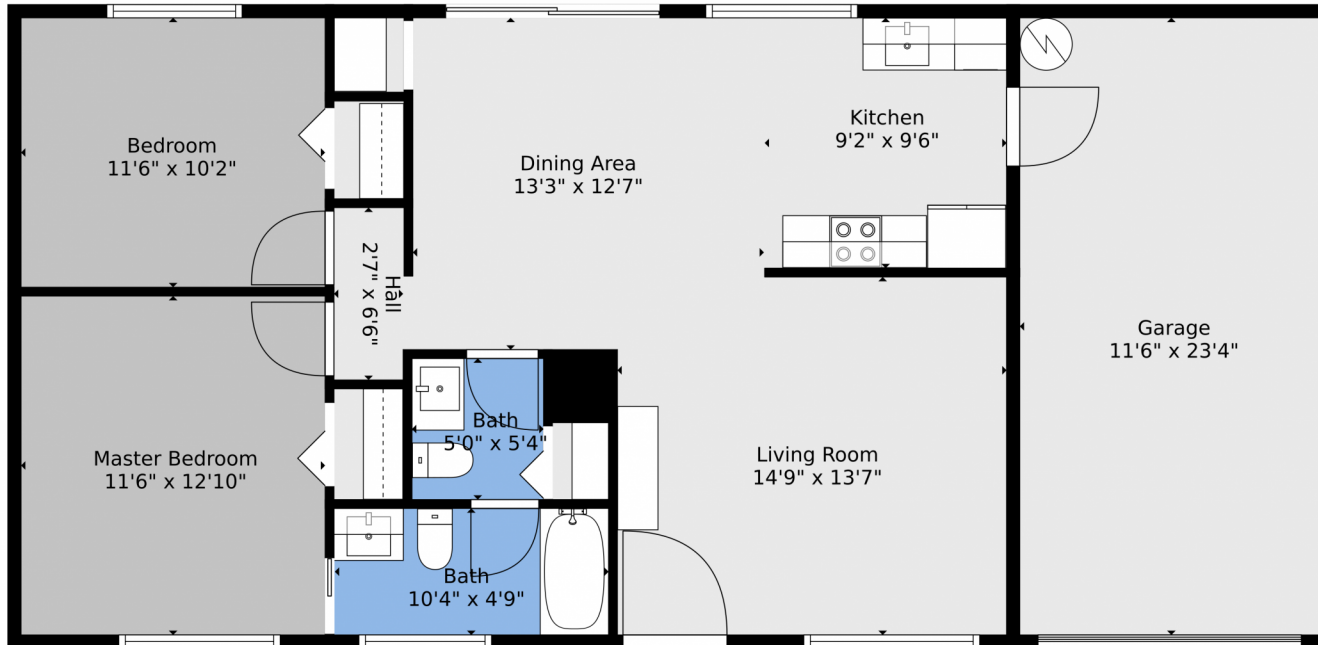
jason@teamcoley.com

<https://teamcoley.asrefl.com/>



Scan code
for more
property
details





Floor Plan Created By V1photos.com, Measurements Deamed Highly Reliable, But Not Guaranteed.



Disclaimer: Sizes and Dimensions are Approximate, Actual May Vary.



Jason M Coley
772-201-5229
jason@teamcoley.com
<https://teamcoley.asrefl.com/>

