

2130 Northeast 56th Street Fort Lauderdale, FL 33308

floorplan_single_0

2130 Northeast 56th Street, Fort Lauderdale, FL 33308
Full floor: 2130 northeast 56th street - fort lauderdale, with dim



Multi Family

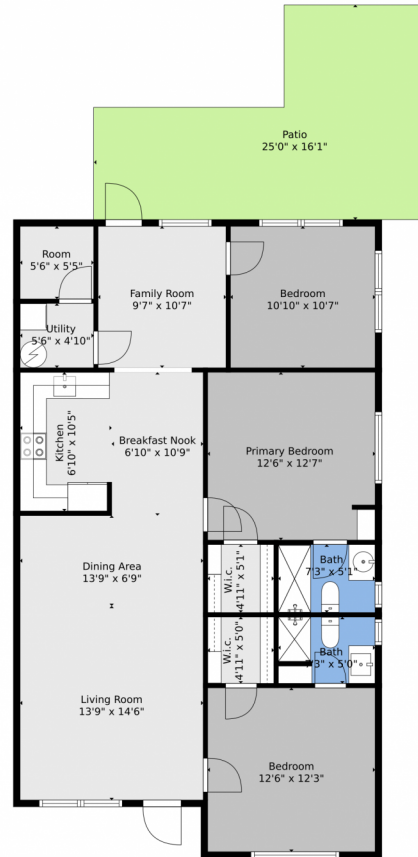


2515 SQFT

John Park
856-693-2913
john@bhpsales.com

Scan code for more property details





TOTAL: 1191 sq. ft
FLOOR 1: 1191 sq. ft
EXCLUDED AREAS: PATIO: 294 sq. ft

Floor Plan Created By V1photos.com, Measurements Deamed Highly Reliable But Not Guaranteed.



Disclaimer: Sizes and Dimensions are Approximate, Actual May Vary.

John Park
856-693-2913
john@bhpsales.com





TOTAL: 1169 sq. ft
FLOOR 1: 1169 sq. ft
EXCLUDED AREAS: PATIO: 474 sq. ft

Floor Plan Created By V1photos.com, Measurements Deamed Highly Reliable But Not Guaranteed.



Disclaimer: Sizes and Dimensions are Approximate, Actual May Vary.

John Park
856-693-2913
john@bhpsales.com





TOTAL: 1191 sq. ft
FLOOR 1: 1191 sq. ft
EXCLUDED AREAS: PATIO: 294 sq. ft

Floor Plan Created By V1photos.com. Measurements Deamed Highly Reliable But Not Guaranteed.



Disclaimer: Sizes and Dimensions are Approximate, Actual May Vary.

John Park
856-693-2913
john@bhpsales.com

