




 Single Family

 2752 SQFT

 5 Beds

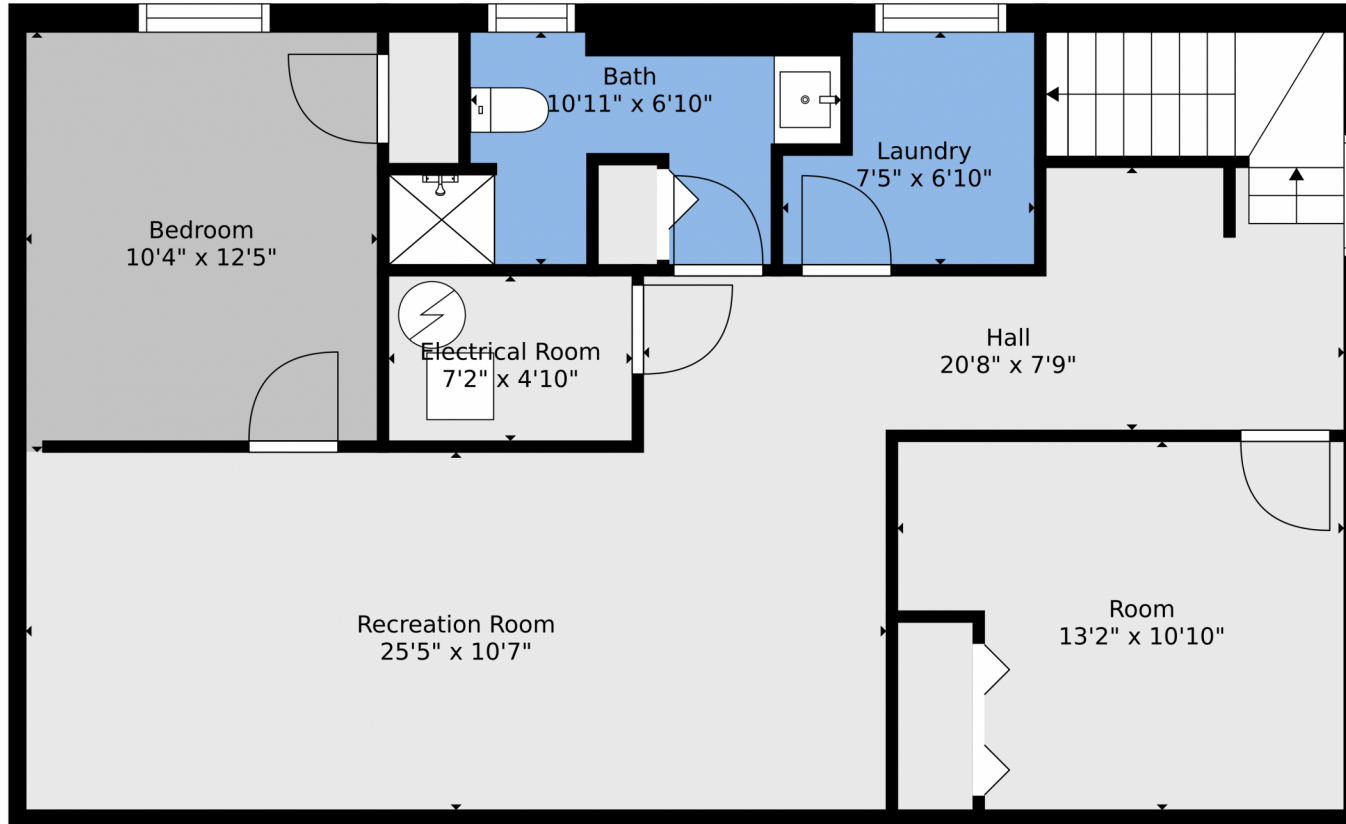
 2 Baths

 2 Car

Terry Moss
720-651-1734
tmoss@wedgewoodhomes.com



2505 East San Miguel Street, Colorado Springs, CO 80909 – Basement



TOTAL: 1894 sq. ft
BELOW GROUND: 854 sq. ft, FLOOR 2: 1040 sq. ft
EXCLUDED AREAS: ELECTRICAL ROOM: 35 sq. ft, UNDEFINED: 5 sq. ft, PATIO: 371 sq. ft,
PORCH: 106 sq. ft, GARAGE: 405 sq. ft
Floor Plan Created By V1photos.com. Measurements Deamed Highly Reliable But Not Guaranteed.



Disclaimer: Sizes and Dimensions are Approximate, Actual May Vary.

Terry Moss
720-651-1734
tmoss@wedgewoodhomes.com

Scan code
for more
property
details



2505 East San Miguel Street, Colorado Springs, CO 80909 – Main



TOTAL: 1894 sq. ft
BELOW GROUND: 854 sq. ft, FLOOR 2: 1040 sq. ft
EXCLUDED AREAS: ELECTRICAL ROOM: 35 sq. ft, UNDEFINED: 5 sq. ft, PATIO: 371 sq. ft,
PORCH: 106 sq. ft, GARAGE: 405 sq. ft

Floor Plan Created By V1photos.com, Measurements Deamed Highly Reliable But Not Guaranteed.



Disclaimer: Sizes and Dimensions are Approximate, Actual May Vary.

Terry Moss
720-651-1734
tmoss@wedgewoodhomes.com



2505 East San Miguel Street, Colorado Springs, CO 80909 – All Levels



Floor 2



Floor 1

TOTAL: 1894 sq. ft
BELOW GROUND: 854 sq. ft, FLOOR 2: 1040 sq. ft
EXCLUDED AREAS: ELECTRICAL ROOM: 35 sq. ft, UNDEFINED: 5 sq. ft, PATIO: 371 sq. ft,
PORCH: 106 sq. ft, GARAGE: 405 sq. ft

Floor Plan Created By V1photos.com, Measurements Deamed Highly Reliable But Not Guaranteed.



Disclaimer: Sizes and Dimensions are Approximate, Actual May Vary.

Terry Moss
720-651-1734
tmoss@wedgewoodhomes.com

