
 Single Family

 1520 SQFT

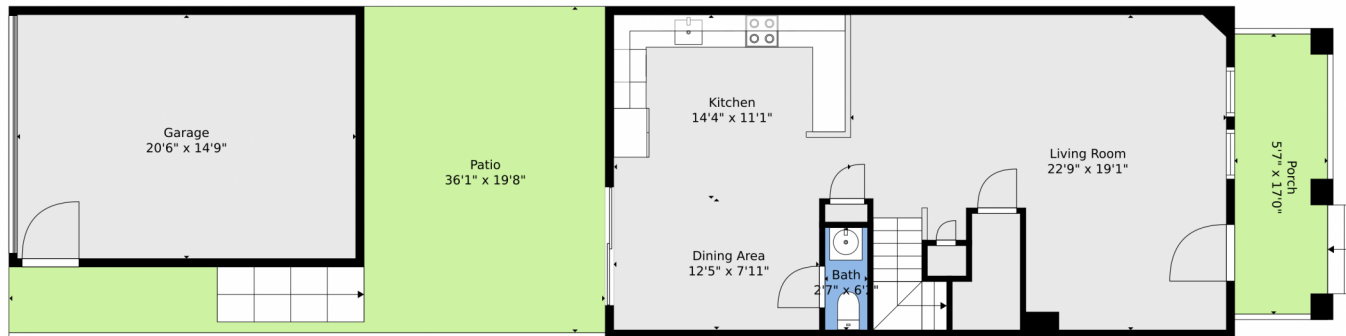
 3 Beds

 2/1 Baths



Taylor Haas
 303-665-7368
 taylorh@coloradorpm.com
<https://www.coloradorpm.com/available-rental-properties-denver>





TOTAL: 1419 sq. ft
FLOOR 1: 709 sq. ft, FLOOR 2: 710 sq. ft
EXCLUDED AREAS: PORCH: 95 sq. ft, PATIO: 375 sq. ft, GARAGE: 303 sq. ft
Floor Plan Created By V1photos.com, Measurements Deamed Highly Reliable But Not Guaranteed.



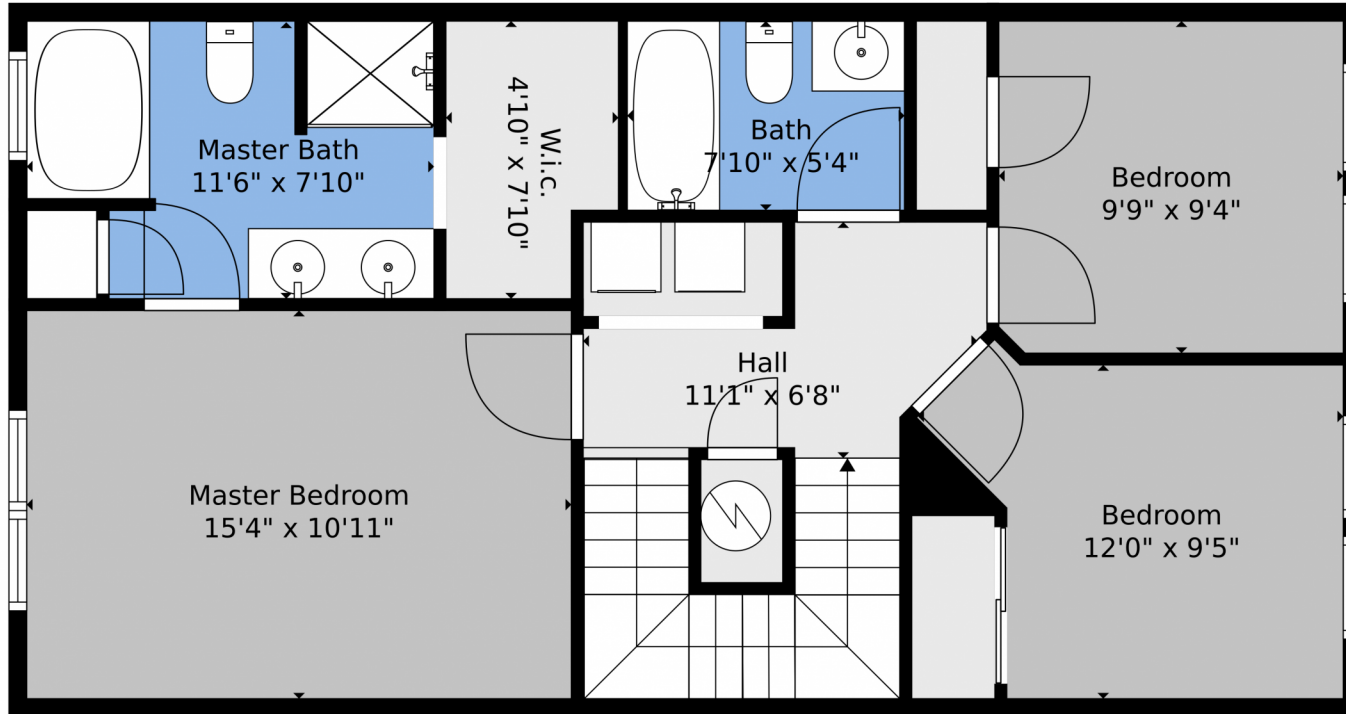
Disclaimer: Sizes and Dimensions are Approximate, Actual May Vary.



Taylor Haas
303-665-7368
taylorh@coloradorpm.com
<https://www.coloradorpm.com/available-rental-properties-denver>



2232 Gilpin Avenue, Colorado Springs, CO 80910 – 2nd Level



TOTAL: 1419 sq. ft
FLOOR 1: 709 sq. ft, FLOOR 2: 710 sq. ft
EXCLUDED AREAS: PORCH: 95 sq. ft, PATIO: 375 sq. ft, GARAGE: 303 sq. ft
Floor Plan Created By V1photos.com, Measurements Deamed Highly Reliable But Not Guaranteed.



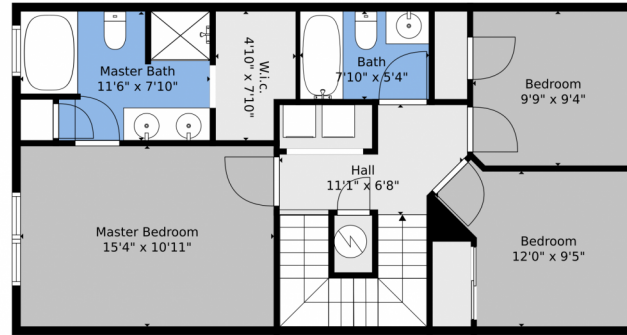
Disclaimer: Sizes and Dimensions are Approximate, Actual May Vary.



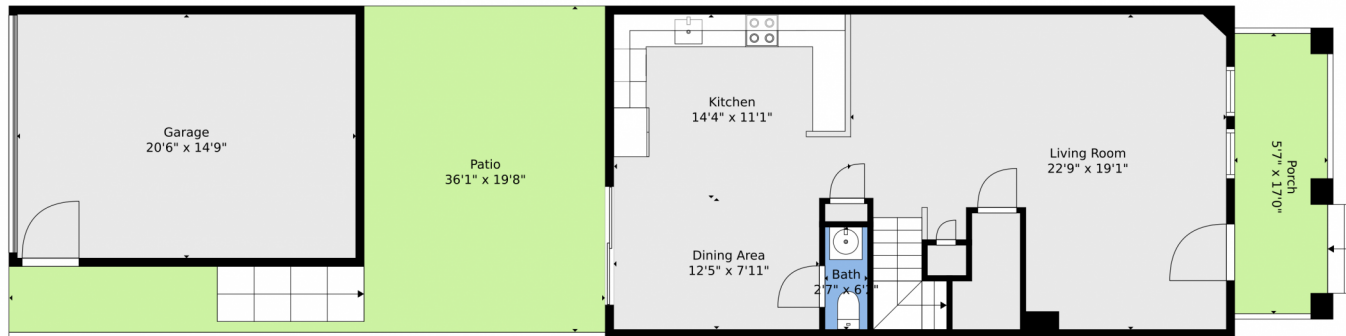
Taylor Haas
303-665-7368
taylorh@coloradorpm.com
<https://www.coloradorpm.com/available-rental-properties-denver>



2232 Gilpin Avenue, Colorado Springs, CO 80910 – All Levels



Floor 2



Floor 1

TOTAL: 1419 sq. ft
FLOOR 1: 709 sq. ft, FLOOR 2: 710 sq. ft
EXCLUDED AREAS: PORCH: 95 sq. ft, PATIO: 375 sq. ft, GARAGE: 303 sq. ft
Floor Plan Created By V1photos.com, Measurements Deamed Highly Reliable But Not Guaranteed.



Disclaimer: Sizes and Dimensions are Approximate, Actual May Vary.



Taylor Haas
303-665-7368
taylorh@coloradorpm.com
<https://www.coloradorpm.com/available-rental-properties-denver>

