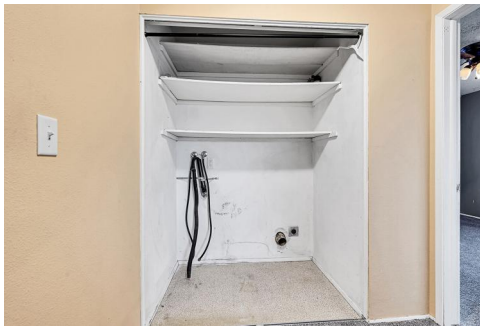



5667 South Lowell Boulevard

Littleton, CO 80123

COMMUNITY: Chateau Bowmar

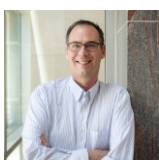


 Townhouse

 1116 SQFT

 2 Beds

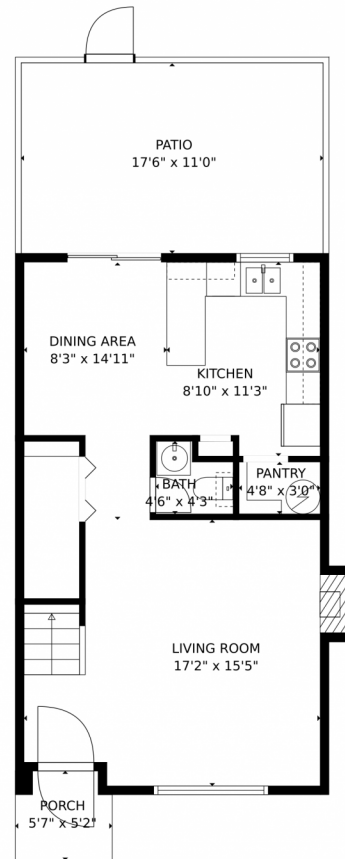
 1/1 Baths



Tim Hoyman
303-669-2676
timhoyman@outlook.com



5667 South Lowell Boulevard, Littleton, CO 80123 – Main



TOTAL: 1036 sq. ft

FLOOR 1: 516 sq. ft, FLOOR 2: 520 sq. ft

EXCLUDED AREAS: PORCH: 28 sq. ft, PATIO: 193 sq. ft, FIREPLACE: 6 sq. ft

FLOOR PLAN CREATED BY CUBICASA APP. MEASUREMENTS DEEMED HIGHLY RELIABLE BUT NOT GUARANTEED.

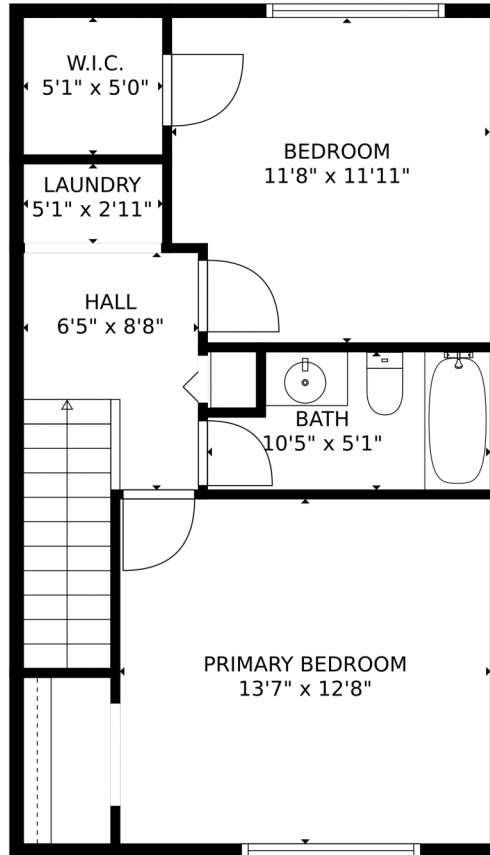
Disclaimer: Sizes and Dimensions are Approximate, Actual May Vary.



Tim Hoyman
303-669-2676
timhoyman@outlook.com



5667 South Lowell Boulevard, Littleton, CO 80123 – 2nd Level



TOTAL: 1036 sq. ft

FLOOR 1: 516 sq. ft, FLOOR 2: 520 sq. ft

EXCLUDED AREAS: PORCH: 28 sq. ft, PATIO: 193 sq. ft, FIREPLACE: 6 sq. ft

FLOOR PLAN CREATED BY CUBICASA APP. MEASUREMENTS DEEMED HIGHLY RELIABLE BUT NOT GUARANTEED.

Disclaimer: Sizes and Dimensions are Approximate, Actual May Vary.



Tim Hoyman
303-669-2676
timhoyman@outlook.com



5667 South Lowell Boulevard, Littleton, CO 80123 – All Levels



TOTAL: 1036 sq. ft
FLOOR 1: 516 sq. ft, FLOOR 2: 520 sq. ft
EXCLUDED AREAS: PORCH: 28 sq. ft, PATIO: 193 sq. ft, FIREPLACE: 6 sq. ft
FLOOR PLAN CREATED BY CUBICASA APP. MEASUREMENTS DEEMED HIGHLY RELIABLE BUT NOT GUARANTEED.

Disclaimer: Sizes and Dimensions are Approximate, Actual May Vary.



Tim Hoyman
303-669-2676
timhoyman@outlook.com

