

Single Family



2232 SQFT



4 Beds



3 Baths



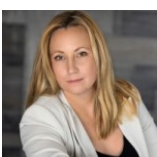
2 Car



1.06 Acre

PROPERTY DETAILS

Discover a stunning mountain home with a 2.5% interest assumable loan, just minutes from the city in Hilldale Pines! This spacious house features breathtaking mountain views, an oversized garage, and a large deck for entertaining. The comfortable layout includes a fenced yard for pets and easy access to nearby parks and trails, with Red Rocks and Bear Creek Lake Park only 15 minutes away. Enjoy high-speed internet for remote work and a convenient RTD express park and ride nearby. The lower level can serve as an in-law suite or rental unit with a plumbed kitchen. A newer solar system is included. Homes like this at such a great price are rare—don't miss out! Buyers aren't required to assume the existing loan.



Lauren Weiss
720-485-1500
lauren@laurenweiss.com
<https://www.laurenweiss.com>



Scan code
for more
property
details

