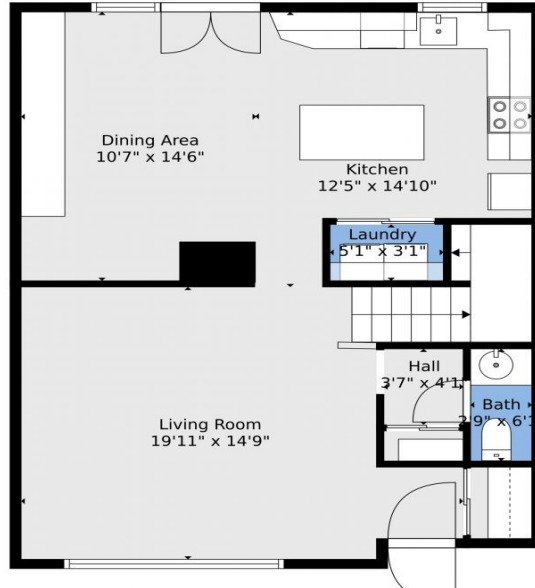
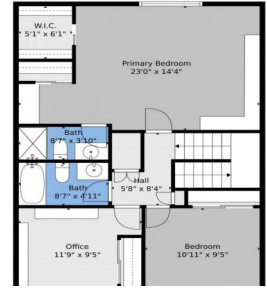


floorplan_single_0



floorplan_single_1



Townhouse

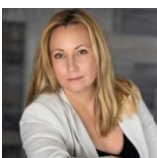
1584 SQFT

3 Beds

2/1 Baths

PROPERTY DETAILS

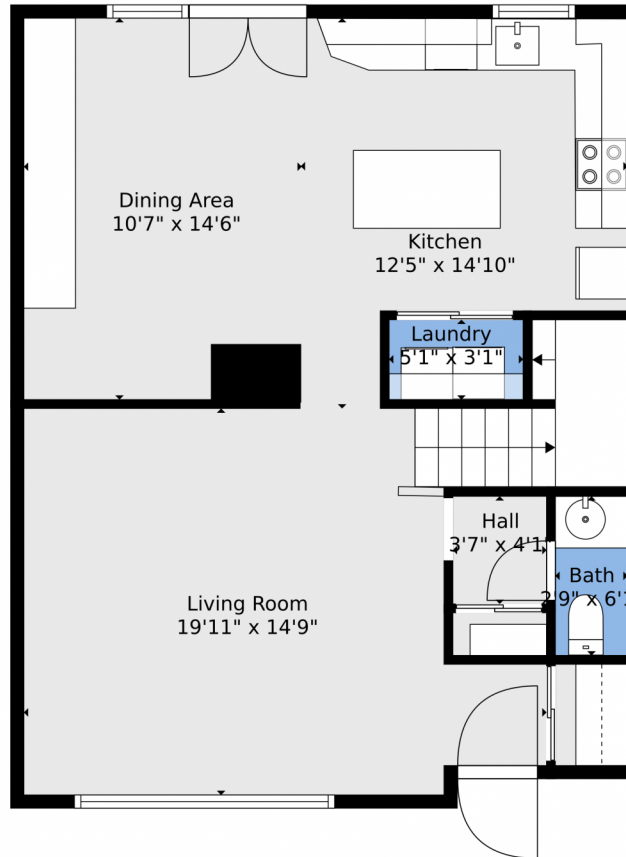
Discover this beautiful three-bedroom townhome near Tech Center, Cherry Creek, and Anschutz! The main level features updated flooring and a remodeled kitchen with ample storage. Enjoy a generous floorplan and a lovely private back patio, plus two deeded parking spots and front flower beds in this south-facing home. With spacious rooms and abundant natural light, this inviting space is perfect for quick occupancy. Interior photos are coming soon as the seller is currently liquidating furnishings. Don't miss your chance to view this hot property now!



Lauren Weiss
720-485-1500
lauren@laurenweiss.com
<https://www.laurenweiss.com>

Scan code
for more
property
details





TOTAL: 1429 sq. ft
FLOOR 1: 674 sq. ft, FLOOR 2: 755 sq. ft

Floor Plan Created By V1photos.com, Measurements Deamed Highly Reliable But Not Guaranteed.

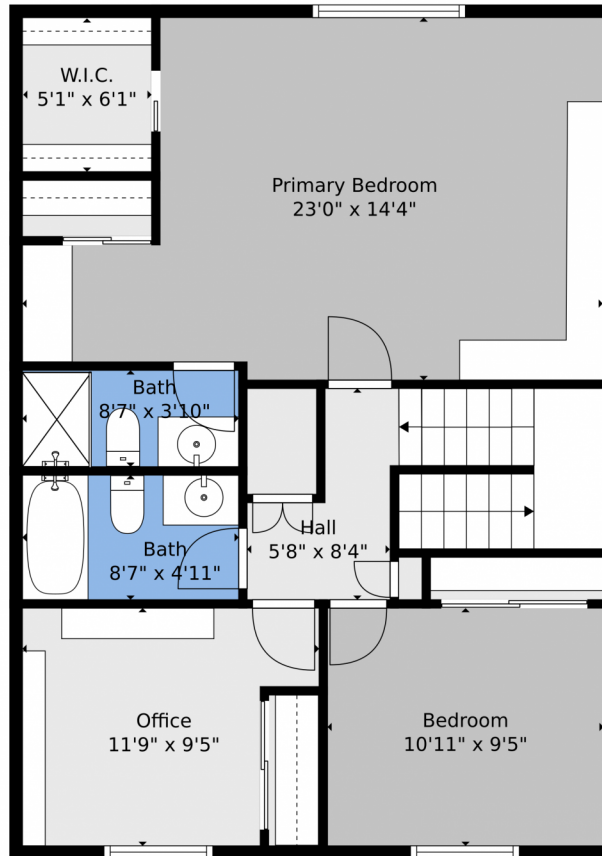


Disclaimer: Sizes and Dimensions are Approximate, Actual May Vary.



Lauren Weiss
720-485-1500
lauren@laurenweiss.com
<https://www.laurenweiss.com>





TOTAL: 1429 sq. ft
FLOOR 1: 674 sq. ft, FLOOR 2: 755 sq. ft

Floor Plan Created By V1photos.com, Measurements Deamed Highly Reliable But Not Guaranteed.



Disclaimer: Sizes and Dimensions are Approximate, Actual May Vary.



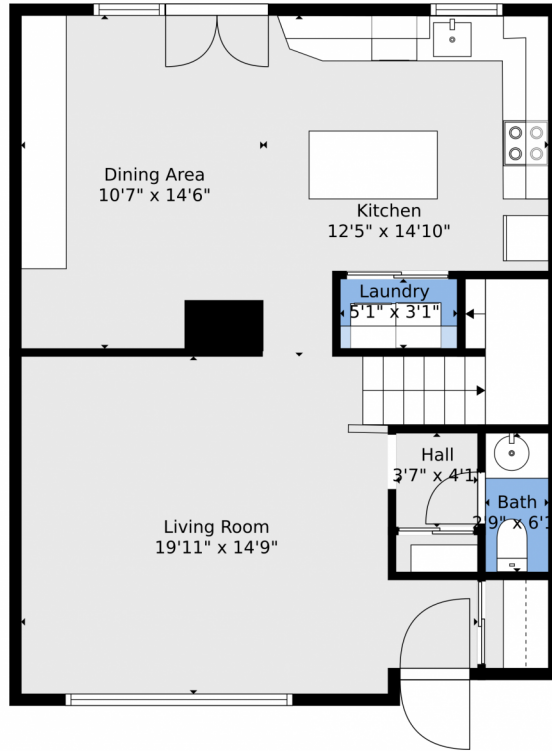
Lauren Weiss
720-485-1500
lauren@laurenweiss.com
<https://www.laurenweiss.com>



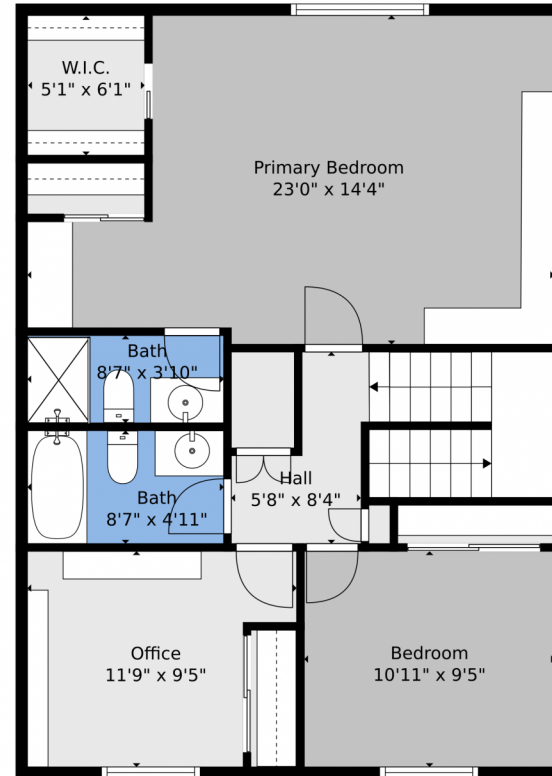
Scan code
for more
property
details



9273 E Nassau Avenue, Denver, CO 80237 – All Levels



Floor 1



Floor 2

TOTAL: 1429 sq. ft
FLOOR 1: 674 sq. ft, FLOOR 2: 755 sq. ft

Floor Plan Created By V1photos.com, Measurements Deamed Highly Reliable But Not Guaranteed.



Disclaimer: Sizes and Dimensions are Approximate, Actual May Vary.



Lauren Weiss
720-485-1500
lauren@laurenweiss.com
<https://www.laurenweiss.com>

