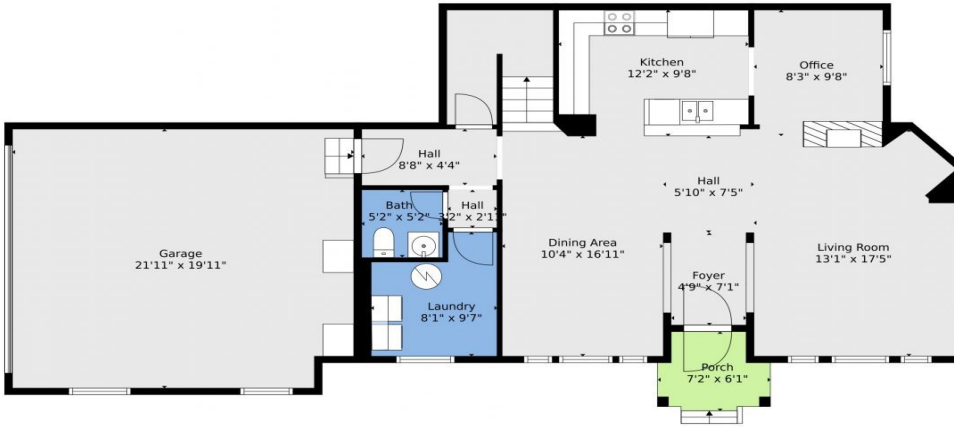




10411 Truckee Street  
 Commerce City, CO 80022  
 COMMUNITY: Parkside at Reunion

MLS # 3374903  
 PRICE \$385,000

floorplan\_single\_0



Condominium



1658 SQFT



3 Beds



2/1 Baths



2 Car



0.08 Acre

## PROPERTY DETAILS

Beautiful turn-key condo in Parkside at Reunion! This stunning, move-in-ready home offers 1,658 sqft of living space with 3 spacious bedrooms, 2.5 bathrooms, and an attached 2-car garage. The open-concept main floor includes a bright family room, dining area, and a functional study space. Enjoy the fully fenced side patio, perfect for relaxation or entertaining. Upstairs, the main bedroom features a 5-piece in-suite bathroom and a large walk-in closet. Additional bedrooms provide flexibility for guests or hobbies. This condo includes a brand-new furnace and central air conditioning. Conveniently located near restaurants, groceries, medical centers, retail, schools, and parks. Don't miss out—schedule your showing today!



**Jorge Armstrong**

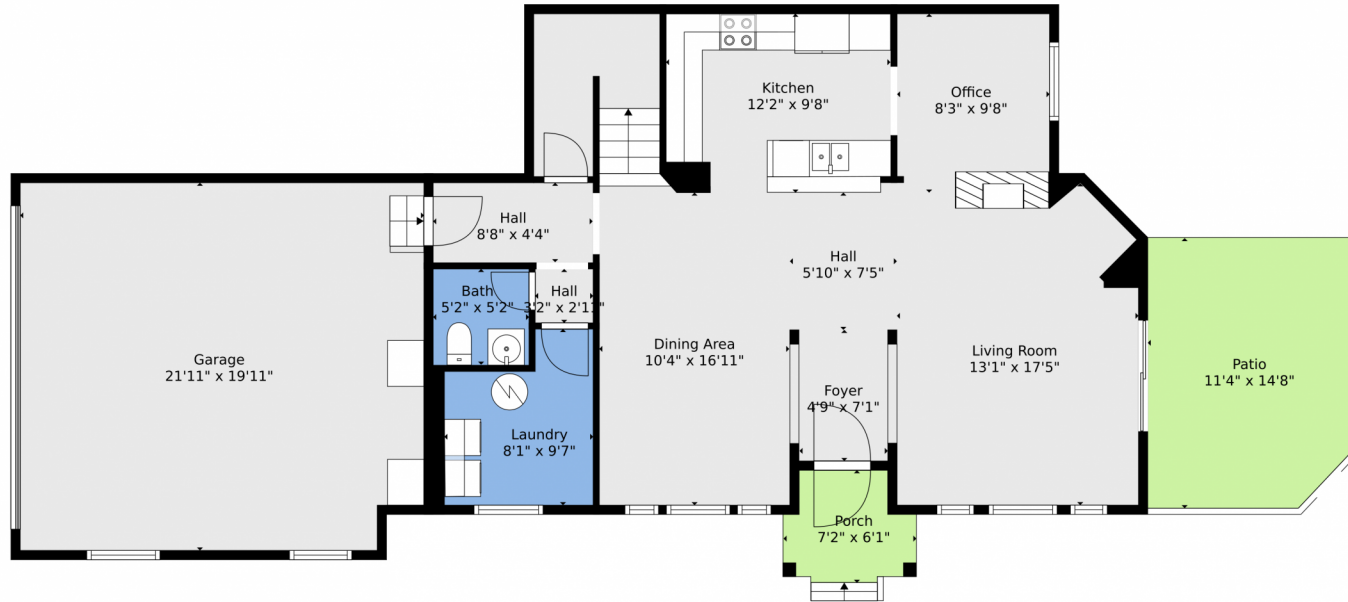
720-233-7091

jorge.armstrong@kw.com

<https://www.milehighcitylivinggroup.com/>

Scan code  
 for more  
 property  
 details





**TOTAL: 1744 sq. ft**  
FLOOR 1: 906 sq. ft, FLOOR 2: 838 sq. ft  
EXCLUDED AREAS: GARAGE: 430 sq. ft, PATIO: 161 sq. ft, PORCH: 41 sq. ft  
Floor Plan Created By V1photos.com, Measurements Deamed Highly Reliable But Not Guaranteed.



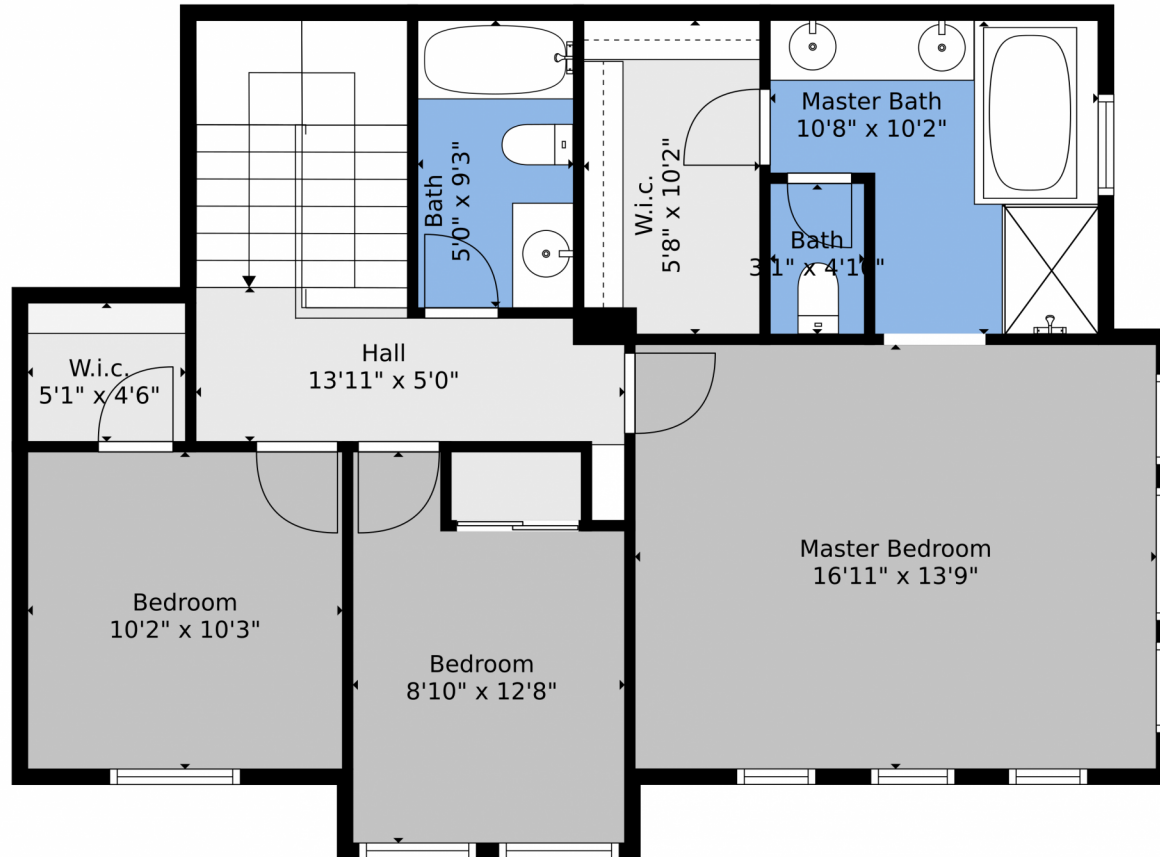
Disclaimer: Sizes and Dimensions are Approximate, Actual May Vary.



**Jorge Armstrong**  
720-233-7091  
jorge.armstrong@kw.com  
<https://www.milehighcitylivinggroup.com/>



10411 Truckee Street, Commerce City, CO 80022 – 2nd Level



**TOTAL: 1744 sq. ft**  
FLOOR 1: 906 sq. ft, FLOOR 2: 838 sq. ft  
EXCLUDED AREAS: GARAGE: 430 sq. ft, PATIO: 161 sq. ft, PORCH: 41 sq. ft  
Floor Plan Created By V1photos.com, Measurements Deamed Highly Reliable But Not Guaranteed.



Disclaimer: Sizes and Dimensions are Approximate, Actual May Vary.



**Jorge Armstrong**

720-233-7091

jorge.armstrong@kw.com

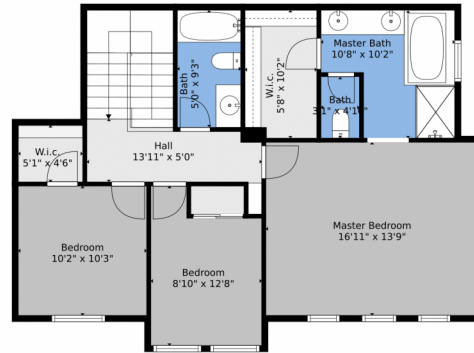
<https://www.milehighcitylivinggroup.com/>



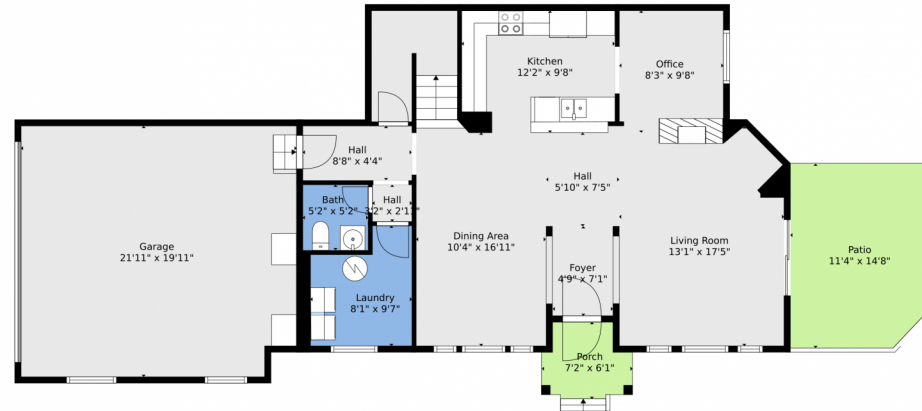
Scan code  
for more  
property  
details



# 10411 Truckee Street, Commerce City, CO 80022 – All Levels



Floor 2



Floor 1

**TOTAL: 1744 sq. ft**  
FLOOR 1: 906 sq. ft, FLOOR 2: 838 sq. ft  
EXCLUDED AREAS: GARAGE: 430 sq. ft, PATIO: 161 sq. ft, PORCH: 41 sq. ft  
Floor Plan Created By V1photos.com, Measurements Deamed Highly Reliable But Not Guaranteed.



Disclaimer: Sizes and Dimensions are Approximate, Actual May Vary.



**Jorge Armstrong**  
720-233-7091  
jorge.armstrong@kw.com  
<https://www.milehighcitylivinggroup.com/>

