 Single Family

 1472 SQFT

 3 Beds

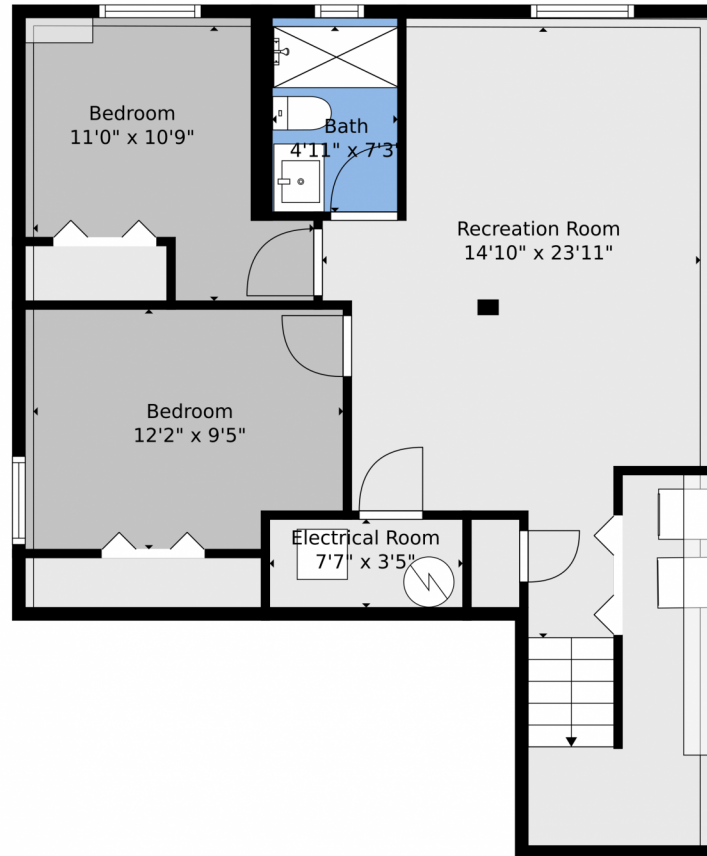
 2 Baths



Taylor Haas
 303-665-7368
 taylorh@coloradorpm.com
<https://www.coloradorpm.com/available-rental-properties-denver>



5551 Jennifer Lane, Colorado Springs, CO 80917 – Lower Level



TOTAL: 1459 sq. ft
BELOW GROUND: 661 sq. ft, FLOOR 2: 798 sq. ft
EXCLUDED AREAS: ELECTRICAL ROOM: 26 sq. ft, DECK: 214 sq. ft, PORCH: 17 sq. ft,
GARAGE: 382 sq. ft

Floor Plan Created By V1photos.com, Measurements Deamed Highly Reliable But Not Guaranteed.



Disclaimer: Sizes and Dimensions are Approximate, Actual May Vary.



Taylor Haas

303-665-7368

taylorh@coloradorpm.com

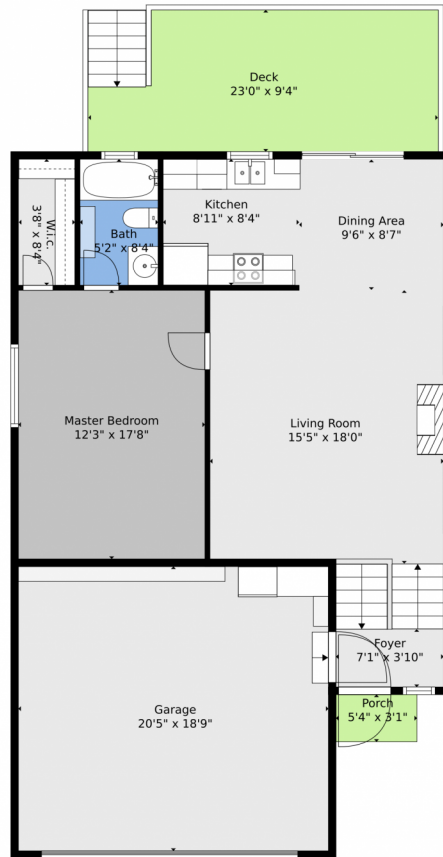
<https://www.coloradorpm.com/available-rental-properties-denver>



Scan code
for more
property
details



5551 Jennifer Lane, Colorado Springs, CO 80917 – 2nd Level



TOTAL: 1459 sq. ft
BELOW GROUND: 661 sq. ft, FLOOR 2: 798 sq. ft
EXCLUDED AREAS: ELECTRICAL ROOM: 26 sq. ft, DECK: 214 sq. ft, PORCH: 17 sq. ft,
GARAGE: 382 sq. ft

Floor Plan Created By V1photos.com, Measurements Deamed Highly Reliable But Not Guaranteed.



Disclaimer: Sizes and Dimensions are Approximate, Actual May Vary.



Taylor Haas
303-665-7368
taylorh@coloradorpm.com
<https://www.coloradorpm.com/available-rental-properties-denver>



Scan code
for more
property
details



5551 Jennifer Lane, Colorado Springs, CO 80917 – All Levels



TOTAL: 1459 sq. ft
BELOW GROUND: 661 sq. ft, FLOOR 2: 798 sq. ft
EXCLUDED AREAS: ELECTRICAL ROOM: 26 sq. ft, DECK: 214 sq. ft, PORCH: 17 sq. ft,
GARAGE: 382 sq. ft

Floor Plan Created By V1photos.com, Measurements Deamed Highly Reliable But Not Guaranteed.



Disclaimer: Sizes and Dimensions are Approximate, Actual May Vary.



Taylor Haas

303-665-7368

taylorh@coloradorpm.com

<https://www.coloradorpm.com/available-rental-properties-denver>



Scan code
for more
property
details

