




floorplan_single_2



 Single Family

 1711 SQFT

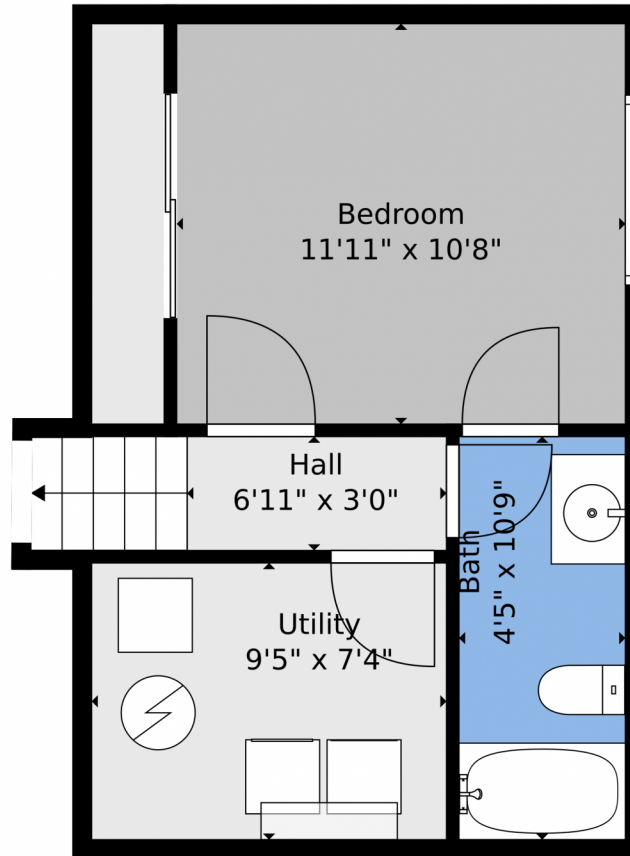
 4 Beds

 3 Baths



Taylor Haas
 303-665-7368
 taylorh@coloradorpm.com
<https://www.coloradorpm.com/available-rental-properties-denver>





TOTAL: 1673 sq. ft
BELOW GROUND: 314 sq. ft, FLOOR 2: 332 sq. ft, FLOOR 3: 415 sq. ft, FLOOR 4: 612 sq. ft
EXCLUDED AREAS: GARAGE: 380 sq. ft, PORCH: 26 sq. ft, DECK: 168 sq. ft
Floor Plan Created By V1photos.com, Measurements Deamed Highly Reliable But Not Guaranteed.



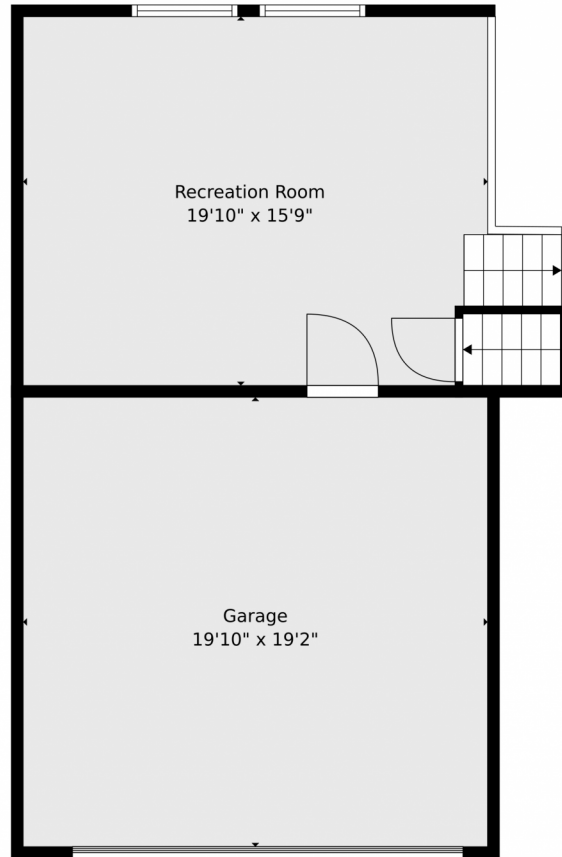
Disclaimer: Sizes and Dimensions are Approximate, Actual May Vary.



Taylor Haas
303-665-7368
taylorh@coloradorpm.com
<https://www.coloradorpm.com/available-rental-properties-denver>



1395 Roseville Drive, Colorado Springs, CO 80911 – Lower Level



TOTAL: 1673 sq. ft
BELOW GROUND: 314 sq. ft, FLOOR 2: 332 sq. ft, FLOOR 3: 415 sq. ft, FLOOR 4: 612 sq. ft
EXCLUDED AREAS: GARAGE: 380 sq. ft, PORCH: 26 sq. ft, DECK: 168 sq. ft
Floor Plan Created By V1photos.com, Measurements Deamed Highly Reliable But Not Guaranteed.

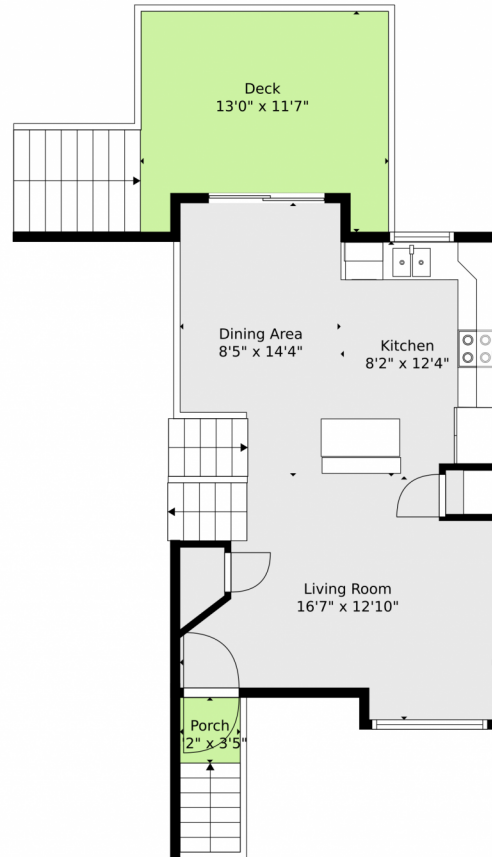


Disclaimer: Sizes and Dimensions are Approximate, Actual May Vary.



Taylor Haas
303-665-7368
taylorh@coloradorpm.com
<https://www.coloradorpm.com/available-rental-properties-denver>





TOTAL: 1673 sq. ft
BELOW GROUND: 314 sq. ft, FLOOR 2: 332 sq. ft, FLOOR 3: 415 sq. ft, FLOOR 4: 612 sq. ft
EXCLUDED AREAS: GARAGE: 380 sq. ft, PORCH: 26 sq. ft, DECK: 168 sq. ft
Floor Plan Created By V1photos.com, Measurements Deamed Highly Reliable But Not Guaranteed.



Disclaimer: Sizes and Dimensions are Approximate, Actual May Vary.

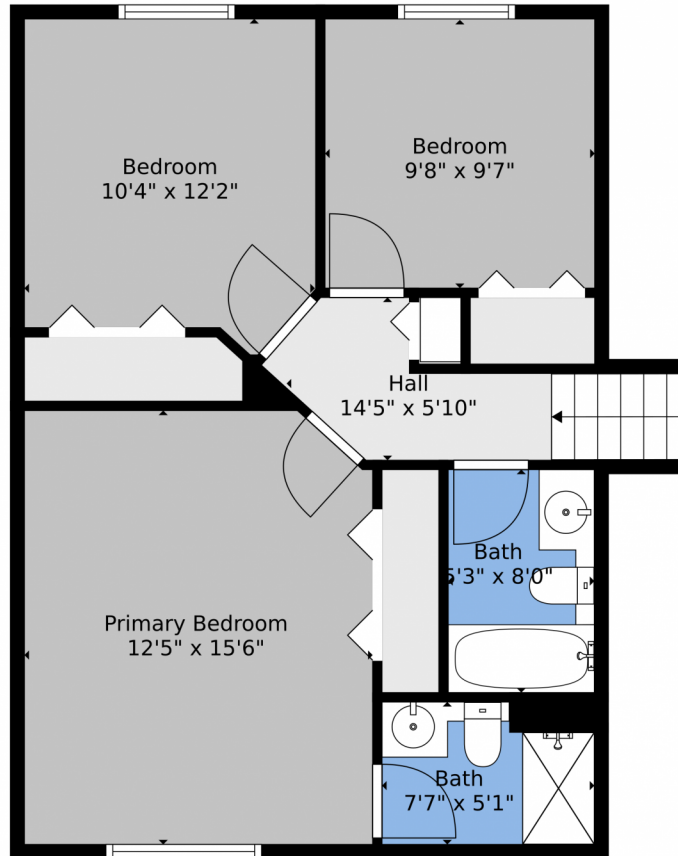


Taylor Haas
303-665-7368
taylorh@coloradorpm.com
<https://www.coloradorpm.com/available-rental-properties-denver>



Scan code
for more
property
details

1395 Roseville Drive, Colorado Springs, CO 80911 – 2nd Level



TOTAL: 1673 sq. ft
BELOW GROUND: 314 sq. ft, FLOOR 2: 332 sq. ft, FLOOR 3: 415 sq. ft, FLOOR 4: 612 sq. ft
EXCLUDED AREAS: GARAGE: 380 sq. ft, PORCH: 26 sq. ft, DECK: 168 sq. ft
Floor Plan Created By V1photos.com, Measurements Deamed Highly Reliable But Not Guaranteed.



Disclaimer: Sizes and Dimensions are Approximate, Actual May Vary.



Taylor Haas
303-665-7368
taylorh@coloradorpm.com
<https://www.coloradorpm.com/available-rental-properties-denver>



1395 Roseville Drive, Colorado Springs, CO 80911 – All Levels



TOTAL: 1673 sq. ft
BELOW GROUND: 314 sq. ft, FLOOR 2: 332 sq. ft, FLOOR 3: 415 sq. ft, FLOOR 4: 612 sq. ft
EXCLUDED AREAS: GARAGE: 380 sq. ft, PORCH: 26 sq. ft, DECK: 168 sq. ft

Floor Plan Created By V1photos.com, Measurements Deamed Highly Reliable But Not Guaranteed.



Disclaimer: Sizes and Dimensions are Approximate, Actual May Vary.



Taylor Haas

303-665-7368

taylorh@coloradorpm.com

<https://www.coloradorpm.com/available-rental-properties-denver>



Scan code
for more
property
details

