

floorplan_single_0



floorplan_single_1



Single Family



1795 SQFT



Jacqueline Feil
970-402-7509
jfeil@windermere.com



Scan code
for more
property
details



3912 Alcazar Drive, Castle Rock, CO 80109 – Lower Level



TOTAL: 1703 sq. ft
BELOW GROUND: 657 sq. ft, FLOOR 2: 1046 sq. ft
EXCLUDED AREAS: PORCH: 71 sq. ft, PATIO: 82 sq. ft, GARAGE: 347 sq. ft,
ELECTRICAL ROOM: 28 sq. ft, BALCONY: 55 sq. ft

Floor Plan Created By V1photos.com, Measurements Deamed Highly Reliable But Not Guaranteed.



Disclaimer: Sizes and Dimensions are Approximate, Actual May Vary.

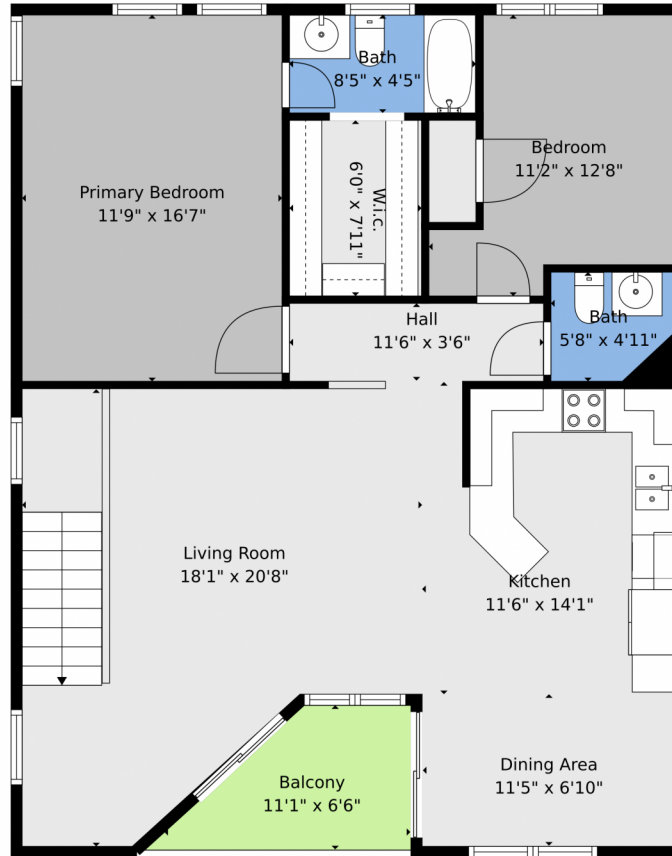


Jacqueline Feil
970-402-7509
jfeil@windermere.com



Scan code
for more
property
details

3912 Alcazar Drive, Castle Rock, CO 80109 – 2nd Level



TOTAL: 1703 sq. ft
BELOW GROUND: 657 sq. ft, FLOOR 2: 1046 sq. ft
EXCLUDED AREAS: PORCH: 71 sq. ft, PATIO: 82 sq. ft, GARAGE: 347 sq. ft,
ELECTRICAL ROOM: 28 sq. ft, BALCONY: 55 sq. ft

Floor Plan Created By V1photos.com, Measurements Deamed Highly Reliable But Not Guaranteed.



Disclaimer: Sizes and Dimensions are Approximate, Actual May Vary.



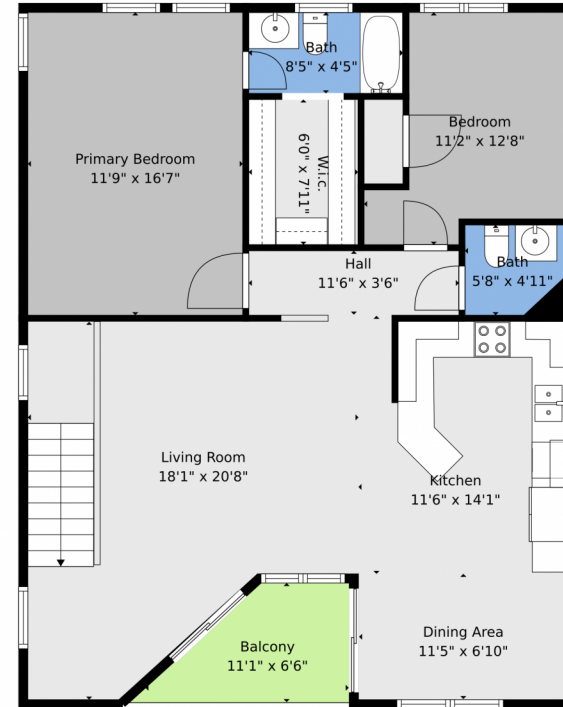
Jacqueline Feil
970-402-7509
jfeil@windermere.com



3912 Alcazar Drive, Castle Rock, CO 80109 – All Levels



Floor 1



Floor 2

TOTAL: 1703 sq. ft
 BELOW GROUND: 657 sq. ft, FLOOR 2: 1046 sq. ft
 EXCLUDED AREAS: PORCH: 71 sq. ft, PATIO: 82 sq. ft, GARAGE: 347 sq. ft,
 ELECTRICAL ROOM: 28 sq. ft, BALCONY: 55 sq. ft

Floor Plan Created By V1photos.com, Measurements Deamed Highly Reliable But Not Guaranteed.



Disclaimer: Sizes and Dimensions are Approximate, Actual May Vary.



Jacqueline Feil
 970-402-7509
 jfeil@windermere.com

