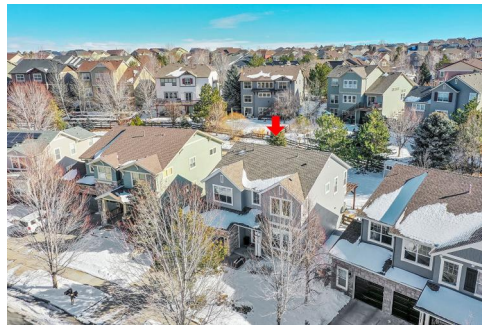


25325 E. Park Crescent Drive
Aurora, CO 80016



 Single Family  2822 SQFT  4 Beds  3/1 Baths  2 Car



Amanda Duran
720-427-9882
amandasvipsservice@yahoo.com



25325 E. Park Crescent Drive, Aurora, CO 80016 — Main



TOTAL: 2561 sq. ft
BELOW GROUND: 551 sq. ft, FLOOR 2: 1076 sq. ft, FLOOR 3: 934 sq. ft
EXCLUDED AREAS: ELECTRICAL ROOM: 174 sq. ft, GARAGE: 389 sq. ft, PORCH: 69 sq. ft,
PATIO: 342 sq. ft, COVERED PATIO: 203 sq. ft, FIREPLACE: 9 sq. ft,
OPEN TO BELOW: 242 sq. ft

Floor Plan Created By V1photos.com, Measurements Deamed Highly Reliable But Not Guaranteed.



Disclaimer: Sizes and Dimensions are Approximate, Actual May Vary.



Amanda Duran
720-427-9882
amandasvipservice@yahoo.com



25325 E. Park Crescent Drive, Aurora, CO 80016 — 2nd Level



TOTAL: 2561 sq. ft
BELOW GROUND: 551 sq. ft, FLOOR 2: 1076 sq. ft, FLOOR 3: 934 sq. ft
EXCLUDED AREAS: ELECTRICAL ROOM: 174 sq. ft, GARAGE: 389 sq. ft, PORCH: 69 sq. ft,
PATIO: 342 sq. ft, COVERED PATIO: 203 sq. ft, FIREPLACE: 9 sq. ft,
OPEN TO BELOW: 242 sq. ft

Floor Plan Created By V1photos.com, Measurements Deamed Highly Reliable But Not Guaranteed.



Disclaimer: Sizes and Dimensions are Approximate, Actual May Vary.



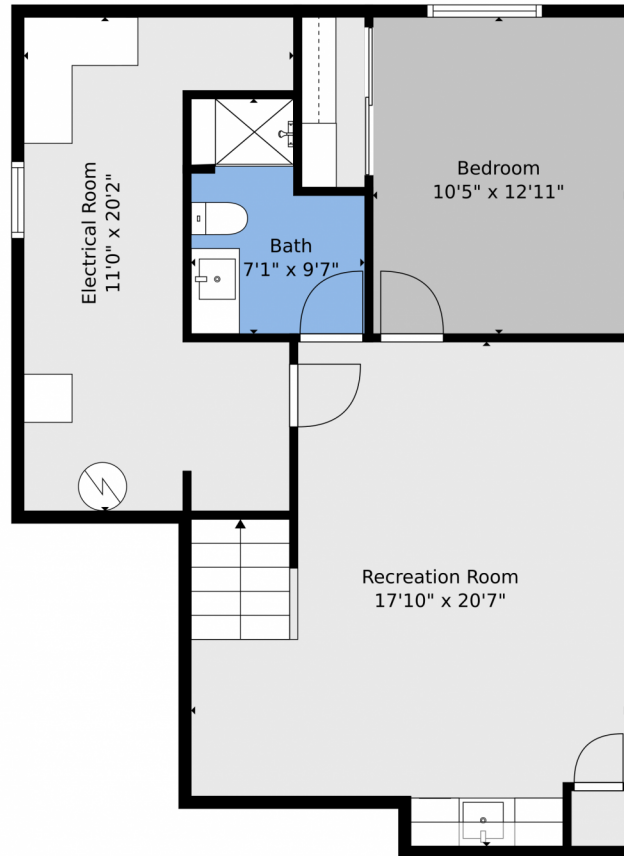
Amanda Duran
720-427-9882
amandasvipservice@yahoo.com



Scan code
for more
property
details



25325 E. Park Crescent Drive, Aurora, CO 80016 — Basement



TOTAL: 2561 sq. ft
BELOW GROUND: 551 sq. ft, FLOOR 2: 1076 sq. ft, FLOOR 3: 934 sq. ft
EXCLUDED AREAS: ELECTRICAL ROOM: 174 sq. ft, GARAGE: 389 sq. ft, PORCH: 69 sq. ft,
PATIO: 342 sq. ft, COVERED PATIO: 203 sq. ft, FIREPLACE: 9 sq. ft,
OPEN TO BELOW: 242 sq. ft

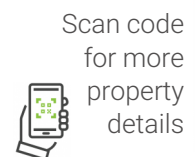
Floor Plan Created By V1photos.com, Measurements Deamed Highly Reliable But Not Guaranteed.



Disclaimer: Sizes and Dimensions are Approximate, Actual May Vary.



Amanda Duran
720-427-9882
amandasvipservice@yahoo.com



Scan code
for more
property
details



25325 E. Park Crescent Drive, Aurora, CO 80016 — All Levels



TOTAL: 2561 sq. ft
BELOW GROUND: 551 sq. ft, FLOOR 2: 1076 sq. ft, FLOOR 3: 934 sq. ft
EXCLUDED AREAS: ELECTRICAL ROOM: 174 sq. ft, GARAGE: 389 sq. ft, PORCH: 69 sq. ft,
PATIO: 342 sq. ft, COVERED PATIO: 203 sq. ft, FIREPLACE: 9 sq. ft,
OPEN TO BELOW: 242 sq. ft

Floor Plan Created By V1photos.com, Measurements Deamed Highly Reliable But Not Guaranteed.



Disclaimer: Sizes and Dimensions are Approximate, Actual May Vary.



Amanda Duran
720-427-9882
amandasvipservice@yahoo.com



Scan code
for more
property
details

