



4035 West 103rd Court
 Westminster, CO 80031
 COMMUNITY: The Windings



Single Family



3186 SQFT



4 Beds



2/1 Baths



2 Car



0.22 Acre



Cathy Burr
 303-887-2800
 cathyburr@remax.net



Scan code
 for more
 property
 details



4035 West 103rd Court, Westminster, CO 80031 – Main



TOTAL: 2989 sq. ft
BELOW GROUND: 642 sq. ft, FLOOR 2: 1247 sq. ft, FLOOR 3: 1100 sq. ft
EXCLUDED AREAS: BASEMENT: 493 sq. ft, ELECTRICAL ROOM: 28 sq. ft, PATIO: 218 sq. ft,
GARAGE: 538 sq. ft, PORCH: 93 sq. ft, DECK: 229 sq. ft,
FIREPLACE: 14 sq. ft, LOW CEILING: 68 sq. ft

Floor Plan Created By V1photos.com, Measurements Deamed Highly Reliable But Not Guaranteed.



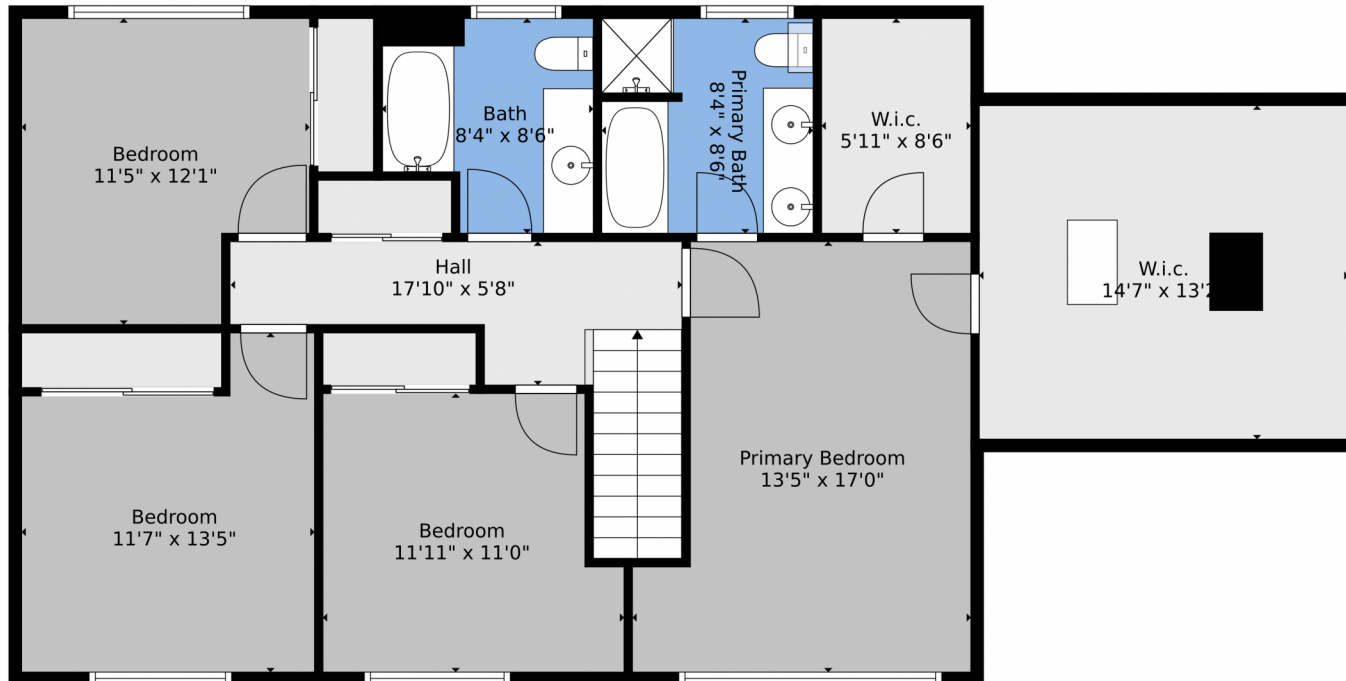
Disclaimer: Sizes and Dimensions are Approximate, Actual May Vary.



Cathy Burr
303-887-2800
cathyburr@remax.net



4035 West 103rd Court, Westminster, CO 80031 – 2nd Level



TOTAL: 2989 sq. ft
BELOW GROUND: 642 sq. ft, FLOOR 2: 1247 sq. ft, FLOOR 3: 1100 sq. ft
EXCLUDED AREAS: BASEMENT: 493 sq. ft, ELECTRICAL ROOM: 28 sq. ft, PATIO: 218 sq. ft,
GARAGE: 538 sq. ft, PORCH: 93 sq. ft, DECK: 229 sq. ft,
FIREPLACE: 14 sq. ft, LOW CEILING: 68 sq. ft

Floor Plan Created By V1photos.com, Measurements Deamed Highly Reliable But Not Guaranteed.



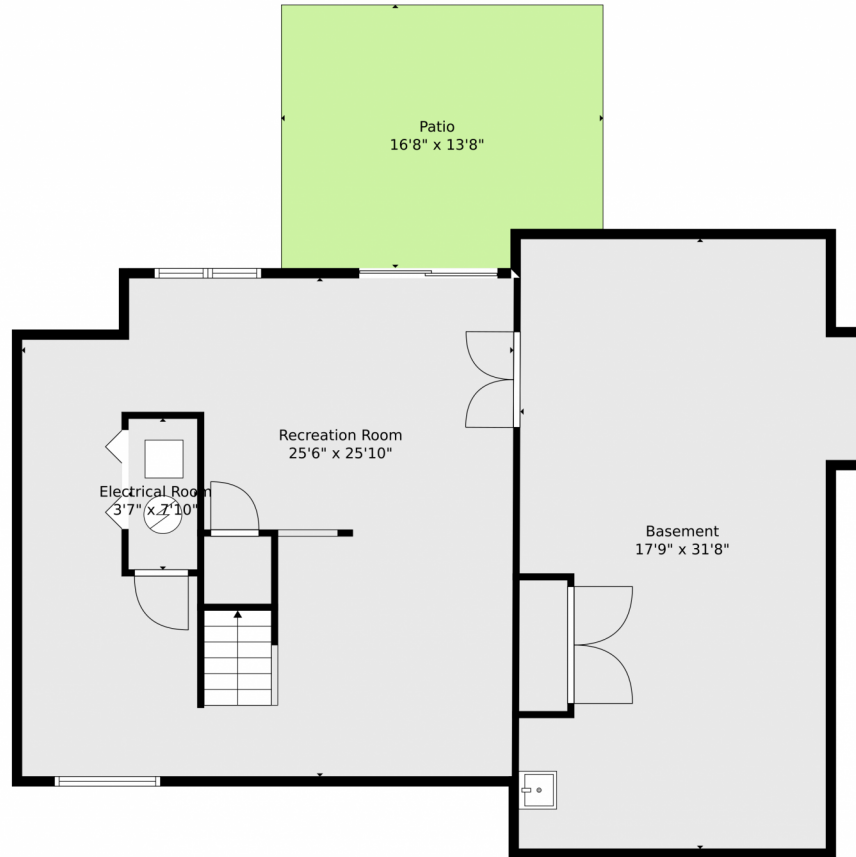
Disclaimer: Sizes and Dimensions are Approximate, Actual May Vary.



Cathy Burr
303-887-2800
cathyburr@remax.net



4035 West 103rd Court, Westminster, CO 80031 – Basement



TOTAL: 2989 sq. ft
BELOW GROUND: 642 sq. ft, FLOOR 2: 1247 sq. ft, FLOOR 3: 1100 sq. ft
EXCLUDED AREAS: BASEMENT: 493 sq. ft, ELECTRICAL ROOM: 28 sq. ft, PATIO: 218 sq. ft,
GARAGE: 538 sq. ft, PORCH: 93 sq. ft, DECK: 229 sq. ft,
FIREPLACE: 14 sq. ft, LOW CEILING: 68 sq. ft

Floor Plan Created By V1photos.com, Measurements Deamed Highly Reliable But Not Guaranteed.



Disclaimer: Sizes and Dimensions are Approximate, Actual May Vary.



Cathy Burr
303-887-2800
cathyburr@remax.net



4035 West 103rd Court, Westminster, CO 80031 – All Levels



TOTAL: 2989 sq. ft
BELOW GROUND: 642 sq. ft, FLOOR 2: 1247 sq. ft, FLOOR 3: 1100 sq. ft
EXCLUDED AREAS: BASEMENT: 493 sq. ft, ELECTRICAL ROOM: 28 sq. ft, PATIO: 218 sq. ft,
GARAGE: 538 sq. ft, PORCH: 93 sq. ft, DECK: 229 sq. ft,
FIREPLACE: 14 sq. ft, LOW CEILING: 68 sq. ft

Floor Plan Created By V1photos.com, Measurements Deamed Highly Reliable But Not Guaranteed.



Disclaimer: Sizes and Dimensions are Approximate, Actual May Vary.



Cathy Burr
303-887-2800
cathyburr@remax.net



Scan code
for more
property
details

