



7706 S Duquesne Way  
Aurora, CO 80016  
COMMUNITY: Creekside Eagle Bend

MLS # 5182612  
PRICE \$1,295,000



Single Family 5005 SQFT 5 Beds 4/1 Baths 3 Car 0.25 Acre

## PROPERTY DETAILS

Discover this stunning 5-bedroom, 5-bathroom home with 5,005 sq. ft. and a spectacular heated saltwater pool! Enjoy outdoor entertaining with a 17,500-gallon pool featuring a baja bench and depths of 3-6 feet. The gourmet kitchen boasts GE Monogram smart appliances, a six-burner range, oversized quartz island, and beverage bar. The open-concept main floor includes a formal dining room, private office, stylish living room, and great room with floor-to-ceiling windows. The luxurious primary suite offers a spa-like bath, heated floors, and a dream closet. The finished basement is perfect for guests, featuring a family room, bedroom, kitchenette, and private entrance. Conveniently located near E-470, Southlands, and parks, this home blends modern luxury and a prime location!



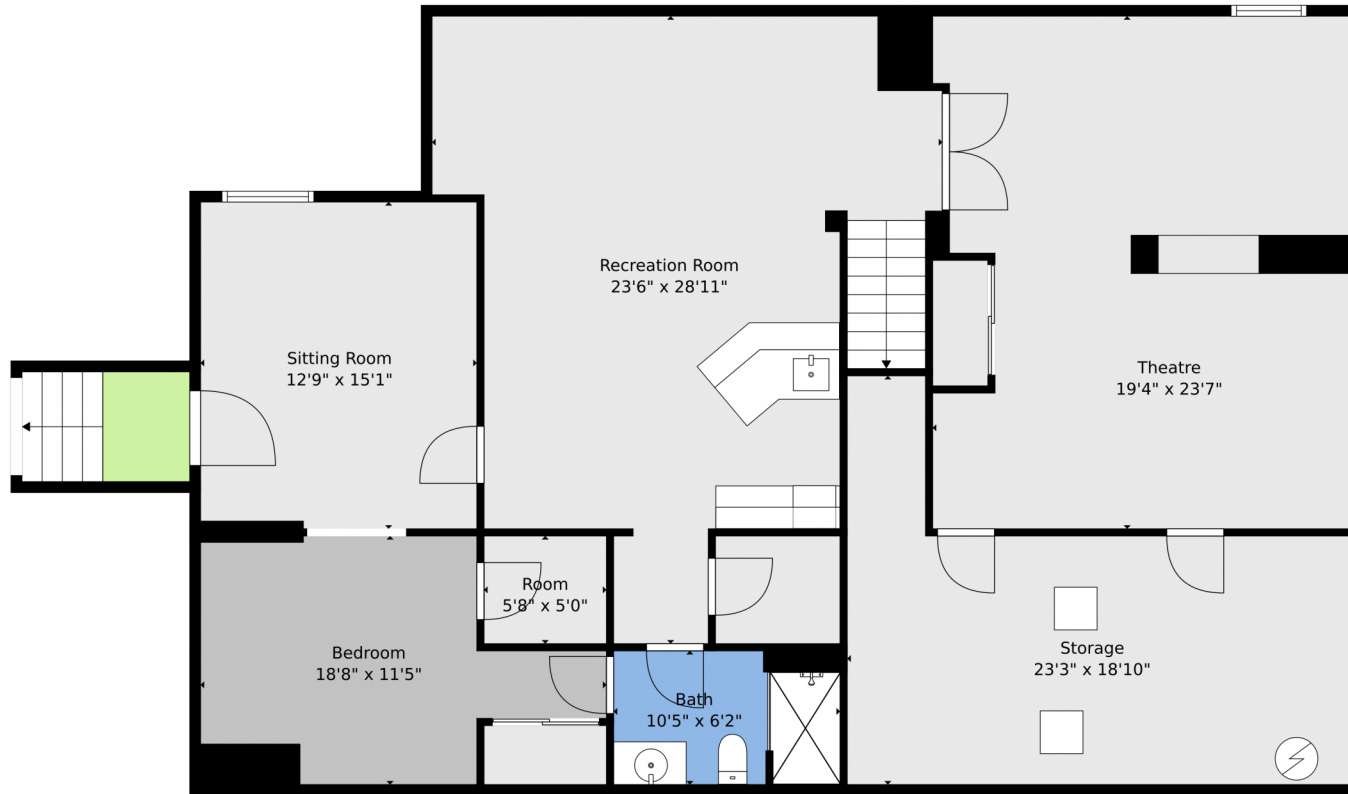
**Ambierre Rediger**  
720-261-7468  
ambierre@peakprairie.com  
<https://www.peakprairie.com/>



Scan code  
for more  
property  
details



7706 S Duquesne Way, Aurora, CO 80016 – Lower Level



**TOTAL: 4993 sq. ft**  
FLOOR 1: 1495 sq. ft, FLOOR 2: 1915 sq. ft, FLOOR 3: 1583 sq. ft  
EXCLUDED AREAS: STORAGE: 293 sq. ft, GARAGE: 603 sq. ft, PORCH: 141 sq. ft,  
PATIO: 318 sq. ft, OPEN TO BELOW: 454 sq. ft

Floor Plan Created By V1photos.com, Measurements Deamed Highly Reliable But Not Guaranteed.

Disclaimer: Sizes and Dimensions are Approximate, Actual May Vary.



**Ambierre Rediger**  
720-261-7468  
ambierre@peakprairie.com  
<https://www.peakprairie.com/>





**TOTAL: 4993 sq. ft**  
FLOOR 1: 1495 sq. ft, FLOOR 2: 1915 sq. ft, FLOOR 3: 1583 sq. ft  
EXCLUDED AREAS: STORAGE: 293 sq. ft, GARAGE: 603 sq. ft, PORCH: 141 sq. ft,  
PATIO: 318 sq. ft, OPEN TO BELOW: 454 sq. ft

Floor Plan Created By V1photos.com, Measurements Deamed Highly Reliable But Not Guaranteed.

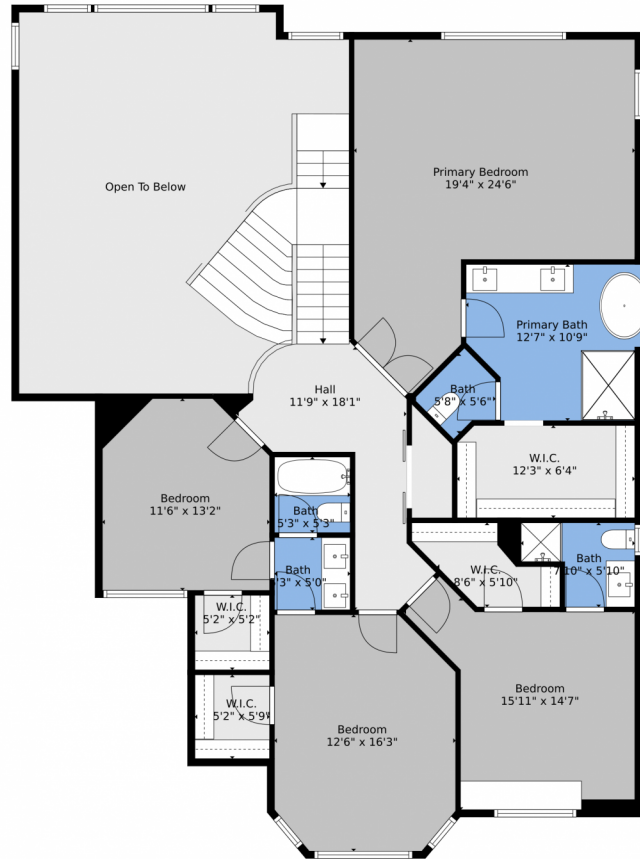


Disclaimer: Sizes and Dimensions are Approximate, Actual May Vary.



**Ambierre Rediger**  
720-261-7468  
ambierre@peakprairie.com  
<https://www.peakprairie.com/>





**TOTAL: 4993 sq. ft**  
FLOOR 1: 1495 sq. ft, FLOOR 2: 1915 sq. ft, FLOOR 3: 1583 sq. ft  
EXCLUDED AREAS: STORAGE: 293 sq. ft, GARAGE: 603 sq. ft, PORCH: 141 sq. ft,  
PATIO: 318 sq. ft, OPEN TO BELOW: 454 sq. ft

Floor Plan Created By V1photos.com, Measurements Deamed Highly Reliable But Not Guaranteed.



Disclaimer: Sizes and Dimensions are Approximate, Actual May Vary.



**Ambierre Rediger**  
720-261-7468  
ambierre@peakprairie.com  
<https://www.peakprairie.com/>

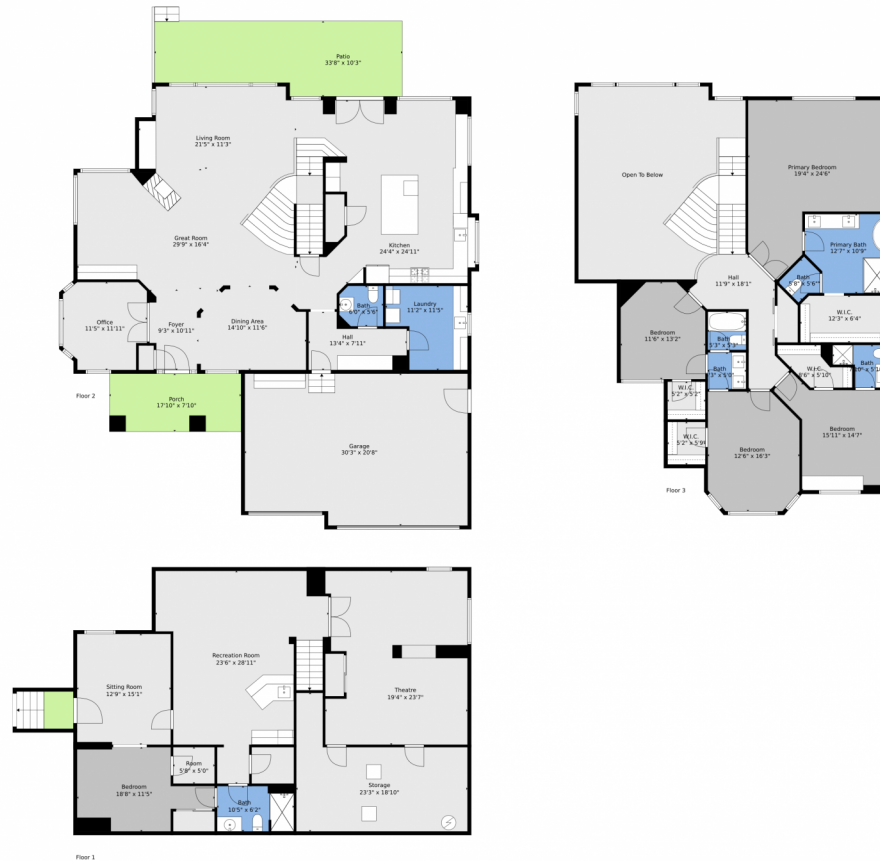


Scan code  
for more  
property  
details





# 7706 S Duquesne Way, Aurora, CO 80016 – All Levels



**TOTAL: 4993 sq. ft**  
FLOOR 1: 1495 sq. ft, FLOOR 2: 1915 sq. ft, FLOOR 3: 1583 sq. ft  
EXCLUDED AREAS: STORAGE: 293 sq. ft, GARAGE: 603 sq. ft, PORCH: 141 sq. ft,  
PATIO: 318 sq. ft, OPEN TO BELOW: 454 sq. ft

Floor Plan Created By V1photos.com, Measurements Deamed Highly Reliable But Not Guaranteed.



Disclaimer: Sizes and Dimensions are Approximate, Actual May Vary.



**Ambierre Rediger**  
720-261-7468  
ambierre@peakprairie.com  
<https://www.peakprairie.com/>



Scan code  
for more  
property  
details