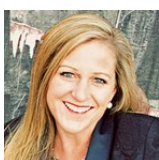




Townhouse 1742 SQFT 3 Beds 2/1 Baths 1 Car

PROPERTY DETAILS

LOCATION! This building backs to the Cherry Creek Trail, offering stunning views and privacy! The unit features updated vinyl plank flooring, 9-foot ceilings, and ample windows. The open great and dining rooms connect to a remodeled kitchen with a coffee bar, island seating, granite countertops, and a large pantry. A sliding door leads to your private patio. Upstairs, the spacious primary bedroom has views and an ensuite bath with granite, new faucets, and a walk-in shower. There are two additional bedrooms, one ideal for an office. The hall bath boasts beautiful tile and granite. Enjoy the trail for outdoor activities, a community playground, and nearby shopping and dining. Convenient access to E-470 and Downtown Parker's farmers market and events! Don't miss out!



Jennifer Bozarth
720-434-3832
jennifer@thebozarthgroup.com

