




 Single Family

 1589 SQFT

 3 Beds

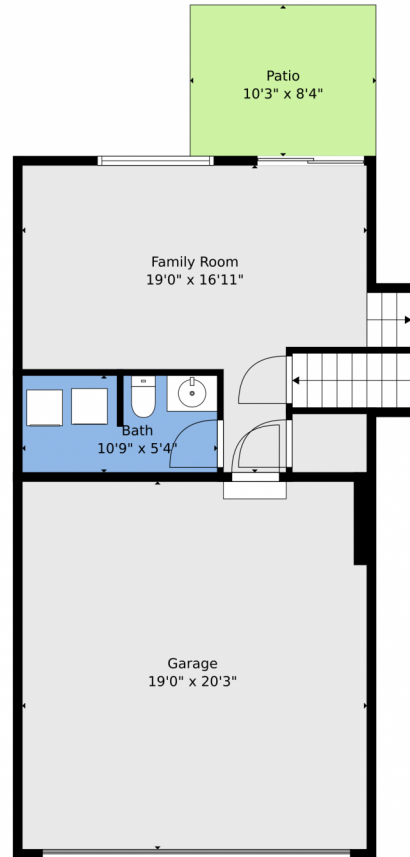
 3 Baths

 2 Car



**Taylor Haas**  
303-665-7368  
taylorh@coloradorpm.com  
<https://www.coloradorpm.com/available-rental-properties-denver>





**TOTAL: 1455 sq. ft**  
BELOW GROUND: 0 sq. ft, FLOOR 2: 337 sq. ft, FLOOR 3: 500 sq. ft, FLOOR 4: 618 sq. ft  
EXCLUDED AREAS: BASEMENT: 412 sq. ft, PATIO: 85 sq. ft, GARAGE: 384 sq. ft,  
PORCH: 109 sq. ft

Floor Plan Created By V1photos.com, Measurements Deamed Highly Reliable But Not Guaranteed.

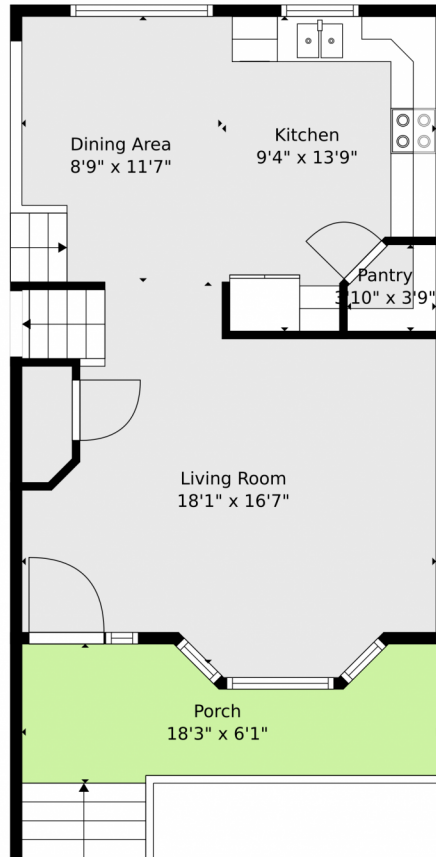


Disclaimer: Sizes and Dimensions are Approximate, Actual May Vary.



**Taylor Haas**  
303-665-7368  
taylorh@coloradorpm.com  
<https://www.coloradorpm.com/available-rental-properties-denver>





**TOTAL: 1455 sq. ft**  
BELOW GROUND: 0 sq. ft, FLOOR 2: 337 sq. ft, FLOOR 3: 500 sq. ft, FLOOR 4: 618 sq. ft  
EXCLUDED AREAS: BASEMENT: 412 sq. ft, PATIO: 85 sq. ft, GARAGE: 384 sq. ft,  
PORCH: 109 sq. ft

Floor Plan Created By V1photos.com, Measurements Deamed Highly Reliable But Not Guaranteed.



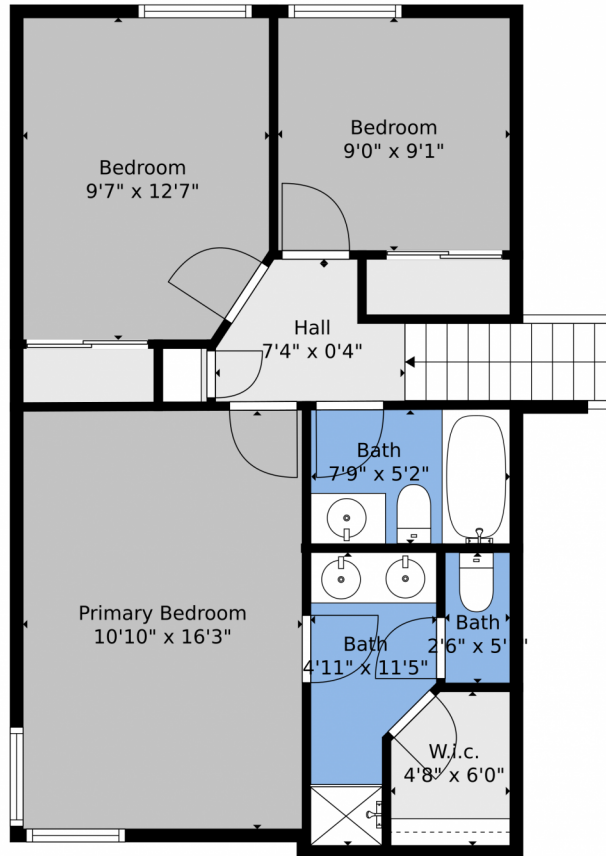
Disclaimer: Sizes and Dimensions are Approximate, Actual May Vary.



**Taylor Haas**  
303-665-7368  
taylorh@coloradorpm.com  
<https://www.coloradorpm.com/available-rental-properties-denver>



6161 Clayton Street, Frederick, CO 80530 – 2nd Level



**TOTAL: 1455 sq. ft**  
BELOW GROUND: 0 sq. ft, FLOOR 2: 337 sq. ft, FLOOR 3: 500 sq. ft, FLOOR 4: 618 sq. ft  
EXCLUDED AREAS: BASEMENT: 412 sq. ft, PATIO: 85 sq. ft, GARAGE: 384 sq. ft,  
PORCH: 109 sq. ft

Floor Plan Created By V1photos.com, Measurements Deamed Highly Reliable But Not Guaranteed.

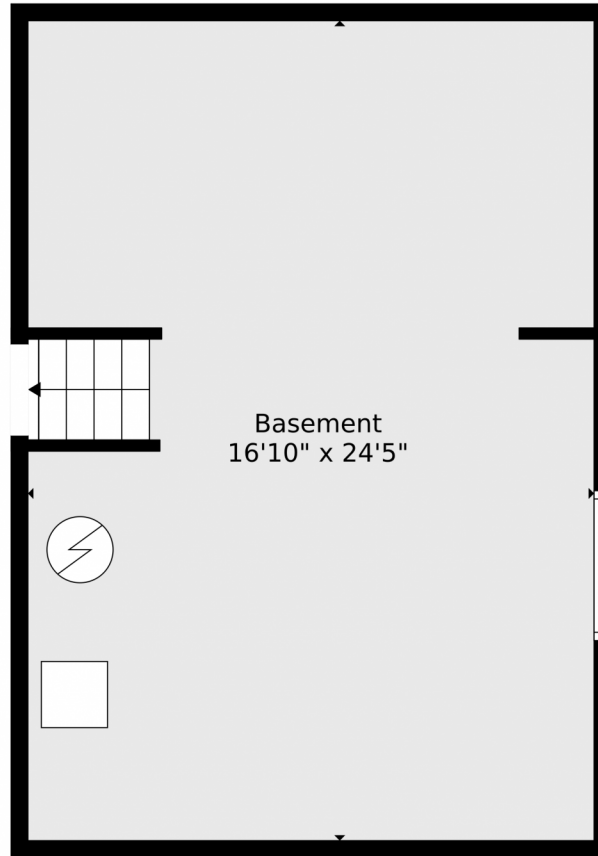


Disclaimer: Sizes and Dimensions are Approximate, Actual May Vary.



**Taylor Haas**  
303-665-7368  
taylorh@coloradorpm.com  
<https://www.coloradorpm.com/available-rental-properties-denver>





**TOTAL: 1455 sq. ft**  
BELOW GROUND: 0 sq. ft, FLOOR 2: 337 sq. ft, FLOOR 3: 500 sq. ft, FLOOR 4: 618 sq. ft  
EXCLUDED AREAS: BASEMENT: 412 sq. ft, PATIO: 85 sq. ft, GARAGE: 384 sq. ft,  
PORCH: 109 sq. ft

Floor Plan Created By V1photos.com. Measurements Deamed Highly Reliable But Not Guaranteed.



Disclaimer: Sizes and Dimensions are Approximate, Actual May Vary.



**Taylor Haas**  
303-665-7368  
taylorh@coloradorpm.com  
<https://www.coloradorpm.com/available-rental-properties-denver>



# 6161 Clayton Street, Frederick, CO 80530 – All Levels



**TOTAL: 1455 sq. ft**  
BELOW GROUND: 0 sq. ft, FLOOR 2: 337 sq. ft, FLOOR 3: 500 sq. ft, FLOOR 4: 618 sq. ft  
EXCLUDED AREAS: BASEMENT: 412 sq. ft, PATIO: 85 sq. ft, GARAGE: 384 sq. ft,  
PORCH: 109 sq. ft

Floor Plan Created By V1photos.com. Measurements Deamed Highly Reliable But Not Guaranteed.



Disclaimer: Sizes and Dimensions are Approximate, Actual May Vary.



**Taylor Haas**

303-665-7368

taylorh@coloradorpm.com

<https://www.coloradorpm.com/available-rental-properties-denver>



Scan code  
for more  
property  
details

