



Single Family



4084 SQFT



4 Beds



2/1 Baths



2 Car



0.15 Acre

PROPERTY DETAILS

Experience comfort and adventure in this stunning 4-bedroom home in The Meadows, Castle Rock. Backing to serene open space and near scenic trails, it offers a lifestyle connected to nature and community. The bright kitchen features white cabinetry, granite counters, and stainless steel appliances, perfect for family gatherings. The cozy family room and elegant living room provide versatile spaces for relaxation and entertaining. Upstairs, a loft serves as a great area for work or play. Enjoy sunsets on the west-facing patio overlooking rolling hills. The Meadows offers parks, trails, and two neighborhood pools, plus easy access to downtown Castle Rock's shopping and dining. This home is not just a house; it's your next chapter. Don't miss out!



Sean Ready

303-331-4190

sean@readygroupkw.com

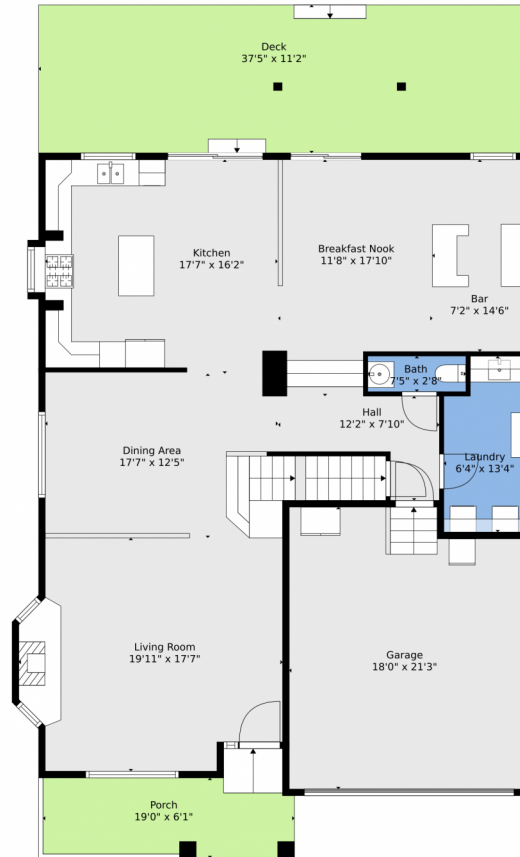
<https://www.readygroupkw.com/>



Scan code
for more
property
details



2229 Candleglow Street, Castle Rock, CO 80109 – Main



TOTAL: 2930 sq. ft
BELOW GROUND: 0 sq. ft, FLOOR 2: 1321 sq. ft, FLOOR 3: 1609 sq. ft
EXCLUDED AREAS: STORAGE: 297 sq. ft, BASEMENT: 879 sq. ft, GARAGE: 366 sq. ft,
DECK: 418 sq. ft, PORCH: 121 sq. ft, BAY WINDOW: 4 sq. ft,
BALCONY: 91 sq. ft

Floor Plan Created By V1photos.com, Measurements Deamed Highly Reliable But Not Guaranteed.



Disclaimer: Sizes and Dimensions are Approximate, Actual May Vary.



Sean Ready
303-331-4190
sean@readygroupkw.com
<https://www.readygroupkw.com/>



2229 Candleglow Street, Castle Rock, CO 80109 – 2nd Level



TOTAL: 2930 sq. ft
BELOW GROUND: 0 sq. ft, FLOOR 2: 1321 sq. ft, FLOOR 3: 1609 sq. ft
EXCLUDED AREAS: STORAGE: 297 sq. ft, BASEMENT: 879 sq. ft, GARAGE: 366 sq. ft,
DECK: 418 sq. ft, PORCH: 121 sq. ft, BAY WINDOW: 4 sq. ft,
BALCONY: 91 sq. ft

Floor Plan Created By V1photos.com, Measurements Deamed Highly Reliable But Not Guaranteed.



Disclaimer: Sizes and Dimensions are Approximate, Actual May Vary.



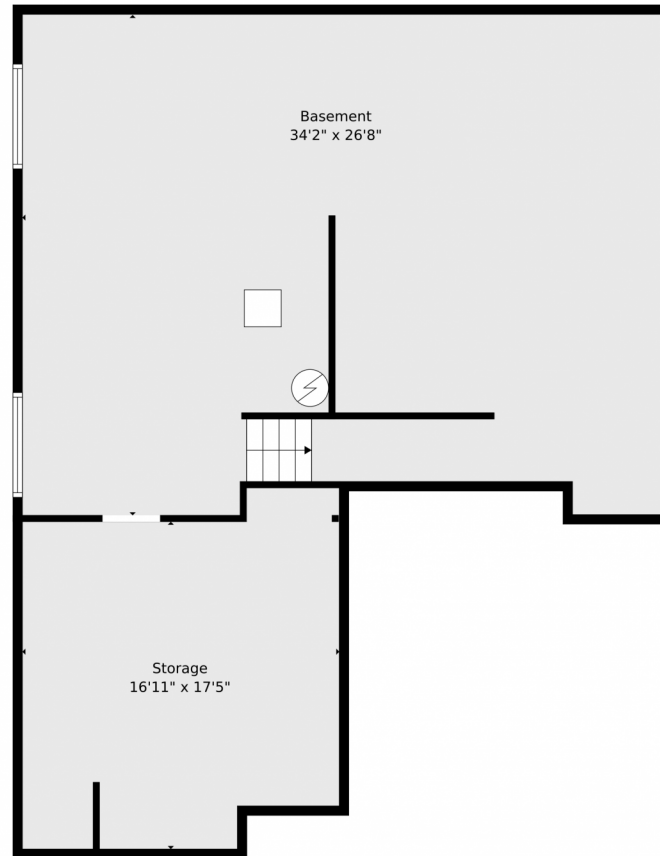
Sean Ready
303-331-4190
sean@readygroupkw.com
<https://www.readygroupkw.com/>



Scan code
for more
property
details



2229 Candleglow Street, Castle Rock, CO 80109 – Basement



TOTAL: 2930 sq. ft
BELOW GROUND: 0 sq. ft, FLOOR 2: 1321 sq. ft, FLOOR 3: 1609 sq. ft
EXCLUDED AREAS: STORAGE: 297 sq. ft, BASEMENT: 879 sq. ft, GARAGE: 366 sq. ft,
DECK: 418 sq. ft, PORCH: 121 sq. ft, BAY WINDOW: 4 sq. ft,
BALCONY: 91 sq. ft

Floor Plan Created By V1photos.com. Measurements Deamed Highly Reliable But Not Guaranteed.



Disclaimer: Sizes and Dimensions are Approximate, Actual May Vary.



Sean Ready
303-331-4190
sean@readygroupkw.com
<https://www.readygroupkw.com/>



Scan code
for more
property
details

2229 Candleglow Street, Castle Rock, CO 80109 – All Levels



TOTAL: 2930 sq. ft
BELOW GROUND: 0 sq. ft, FLOOR 2: 1321 sq. ft, FLOOR 3: 1609 sq. ft
EXCLUDED AREAS: STORAGE: 297 sq. ft, BASEMENT: 879 sq. ft, GARAGE: 366 sq. ft,
DECK: 418 sq. ft, PORCH: 121 sq. ft, BAY WINDOW: 4 sq. ft,
BALCONY: 91 sq. ft

Floor Plan Created By V1photos.com, Measurements Deamed Highly Reliable But Not Guaranteed.



Disclaimer: Sizes and Dimensions are Approximate, Actual May Vary.



Sean Ready
303-331-4190
sean@readygroupkw.com
<https://www.readygroupkw.com/>



Scan code
for more
property
details

