



1542 Snap Dragon
Superior, CO 80027

PRICE \$799,500



Single Family



2637 SQFT



4 Beds



3/1 Baths



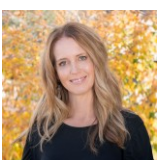
2 Car



0.14 Acre

PROPERTY DETAILS

Welcome to this beautiful 2-story home on a cul-de-sac, backing to open space and near trails, parks, shopping, and dining. The main level features stunning hardwood floors, soaring ceilings, and large windows for plenty of natural light. Enjoy the living room with a bay window, a cozy family room with a gas fireplace, and an updated kitchen with granite counters and stainless steel appliances. The upper level has four bedrooms, including a tranquil primary suite with an attached 5-piece bath and walk-in closet. The finished basement offers a spacious rec room and an updated 3/4 bath. Step outside to a backyard patio perfect for gatherings and summer BBQs, with views of the open space. This home is ready for you to add your personal touch!



Terri Ellerington

303-929-8116

terri@elevated-team.com

<https://www.remax.com/real-estate-agents/terri-ellerington-louisville-co/10205130>

Scan code
for more
property
details



1542 Snap Dragon, Superior, CO 80027 – Main



TOTAL: 2488 sq. ft
BELOW GROUND: 545 sq. ft, FLOOR 2: 974 sq. ft, FLOOR 3: 969 sq. ft
EXCLUDED AREAS: UNDEFINED: 20 sq. ft, ELECTRICAL ROOM: 33 sq. ft, GARAGE: 386 sq. ft,
PORCH: 34 sq. ft, DECK: 208 sq. ft, OPEN TO BELOW: 307 sq. ft

Floor Plan Created By V1photos.com, Measurements Deamed Highly Reliable But Not Guaranteed.



Disclaimer: Sizes and Dimensions are Approximate, Actual May Vary.



Terri Ellerington

303-929-8116

terri@elevated-team.com

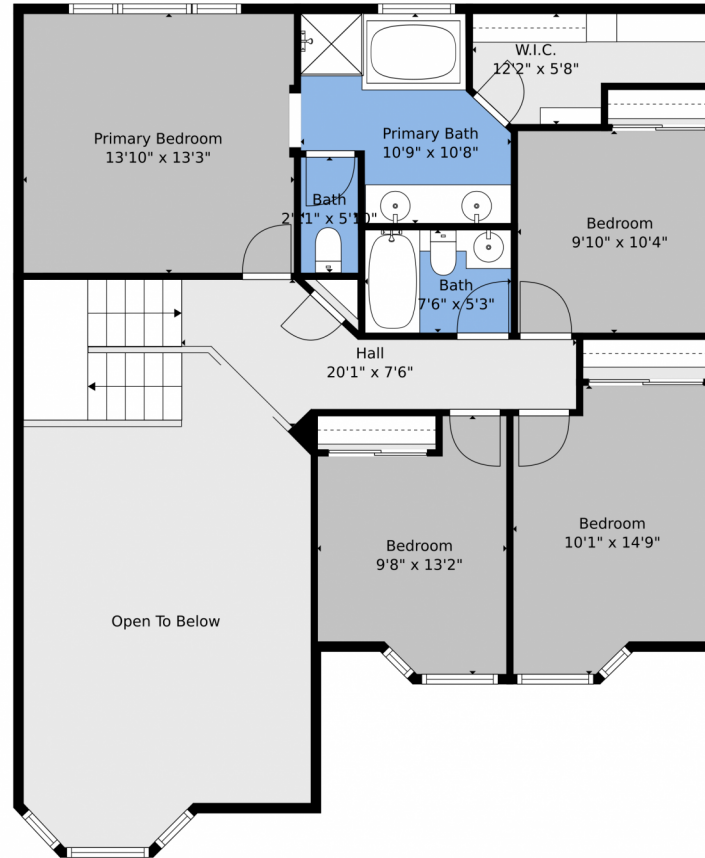
<https://www.remax.com/real-estate-agents/terri-ellerington-louisville-co/102051301>



Scan code
for more
property
details



1542 Snap Dragon, Superior, CO 80027 – 2nd Level



TOTAL: 2488 sq. ft
BELOW GROUND: 545 sq. ft, FLOOR 2: 974 sq. ft, FLOOR 3: 969 sq. ft
EXCLUDED AREAS: UNDEFINED: 20 sq. ft, ELECTRICAL ROOM: 33 sq. ft, GARAGE: 386 sq. ft,
PORCH: 34 sq. ft, DECK: 208 sq. ft, OPEN TO BELOW: 307 sq. ft

Floor Plan Created By V1photos.com, Measurements Deamed Highly Reliable But Not Guaranteed.



Disclaimer: Sizes and Dimensions are Approximate, Actual May Vary.



Terri Ellerington

303-929-8116

terri@elevated-team.com

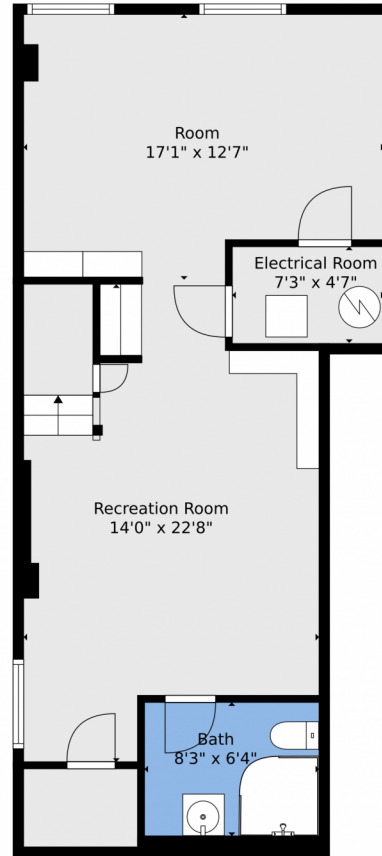
<https://www.remax.com/real-estate-agents/terri-ellerington-louisville-co/102051301>



Scan code
for more
property
details



1542 Snap Dragon, Superior, CO 80027 – Lower Level



TOTAL: 2488 sq. ft
BELOW GROUND: 545 sq. ft, FLOOR 2: 974 sq. ft, FLOOR 3: 969 sq. ft
EXCLUDED AREAS: UNDEFINED: 20 sq. ft, ELECTRICAL ROOM: 33 sq. ft, GARAGE: 386 sq. ft,
PORCH: 34 sq. ft, DECK: 208 sq. ft, OPEN TO BELOW: 307 sq. ft

Floor Plan Created By V1photos.com, Measurements Deamed Highly Reliable But Not Guaranteed.



Disclaimer: Sizes and Dimensions are Approximate, Actual May Vary.



Terri Ellerington

303-929-8116

terri@elevated-team.com

<https://www.remax.com/real-estate-agents/terri-ellerington-louisville-co/102051301>



Scan code
for more
property
details



1542 Snap Dragon, Superior, CO 80027 – All Levels



TOTAL: 2488 sq. ft
BELOW GROUND: 545 sq. ft, FLOOR 2: 974 sq. ft, FLOOR 3: 969 sq. ft
EXCLUDED AREAS: UNDEFINED: 20 sq. ft, ELECTRICAL ROOM: 33 sq. ft, GARAGE: 386 sq. ft,
PORCH: 34 sq. ft, DECK: 208 sq. ft, OPEN TO BELOW: 307 sq. ft

Floor Plan Created By V1photos.com, Measurements Deamed Highly Reliable But Not Guaranteed.



Disclaimer: Sizes and Dimensions are Approximate, Actual May Vary.



Terri Ellerington

303-929-8116

terri@elevated-team.com

<https://www.remax.com/real-estate-agents/terri-ellerington-louisville-co/102051301>



Scan code
for more
property
details

