



340 Main Street
 Louisville, CO 80027
 COMMUNITY: Downtown Louisville

PRICE
 \$1,350,000

Build Your Dream Home, Downtown Louisville!



Vacant Land



2542 SQFT



3 Beds



2 Baths



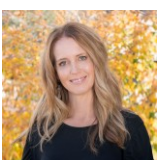
1 Car



0.19 Acre

PROPERTY DETAILS

Build your dream home on a spacious 8,268 sqft lot in Downtown Louisville. The seller has completed a survey, soil reports, and plans with DAJ Design. This prime location is steps from Louisville Community Park and Coal Creek Trails, and just a block from downtown restaurants and shops. Located in the Boulder Valley School District, it's within walking/biking distance to parks and schools. You can design a ranch-style home with an ADU or any suitable layout. The current home is ready for removal, allowing you to start building right away. Don't miss this rare opportunity in Old Town Louisville at the end of Main Street! Call today for more information.



Terri Ellerington

303-929-8116

terri@elevated-team.com

<https://www.remax.com/real-estate-agents/terri-ellerington-louisville-co/10205130>

Scan code
 for more
 property
 details

