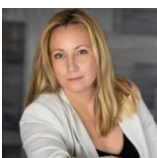


Townhouse 974 SQFT 2 Beds 1/1 Baths

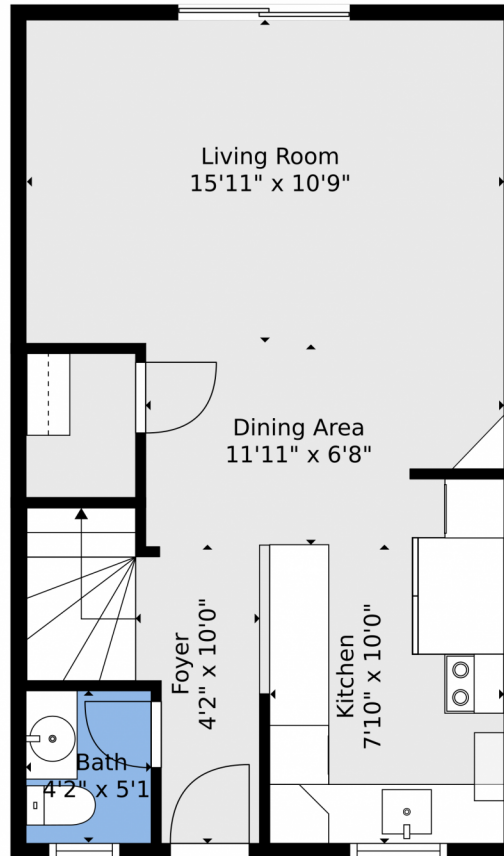
PROPERTY DETAILS

Discover this charming townhome in Denver's popular Mountain View neighborhood, near Highlands and Tennyson Arts District. Recently painted and nestled in a quiet complex with low HOA fees, this home offers two deeded parking spots and ample off-street parking. With mature trees and a cozy layout, it's a fantastic find at this price!



Lauren Weiss
720-485-1500
lauren@laurenweiss.com
<https://www.laurenweiss.com>





TOTAL: 878 sq. ft
FLOOR 1: 439 sq. ft, FLOOR 2: 439 sq. ft

Floor Plan Created By V1photos.com, Measurements Deamed Highly Reliable But Not Guaranteed.



Disclaimer: Sizes and Dimensions are Approximate, Actual May Vary.

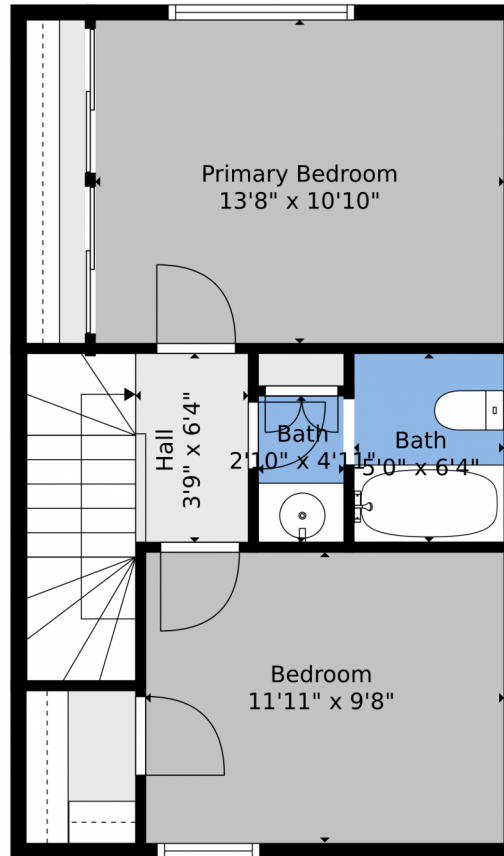


Lauren Weiss
720-485-1500
lauren@laurenweiss.com
<https://www.laurenweiss.com>



Scan code
for more
property
details





TOTAL: 878 sq. ft
FLOOR 1: 439 sq. ft, FLOOR 2: 439 sq. ft

Floor Plan Created By V1photos.com, Measurements Deamed Highly Reliable But Not Guaranteed.



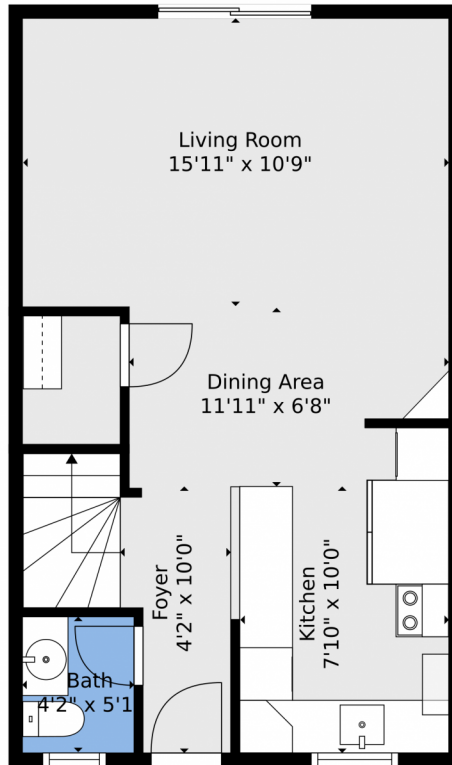
Disclaimer: Sizes and Dimensions are Approximate, Actual May Vary.



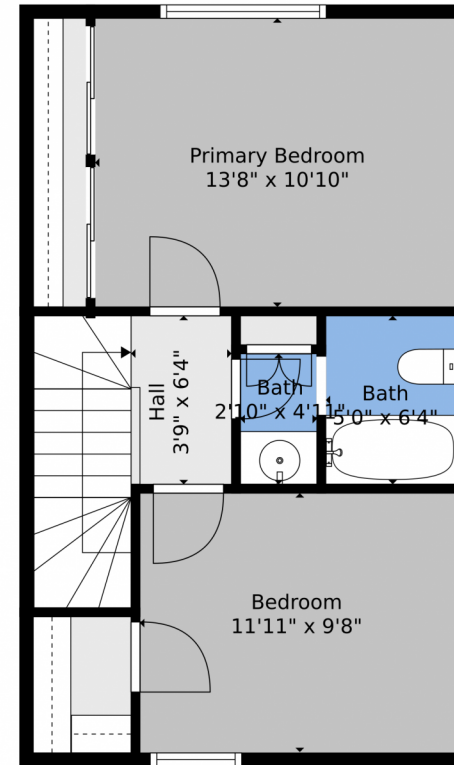
Lauren Weiss
720-485-1500
lauren@laurenweiss.com
<https://www.laurenweiss.com>



5930 W 41st Avenue, Wheat Ridge, CO 80212 — floorplan_all_0



Floor 1



Floor 2

TOTAL: 878 sq. ft
FLOOR 1: 439 sq. ft, FLOOR 2: 439 sq. ft

Floor Plan Created By V1photos.com, Measurements Deamed Highly Reliable But Not Guaranteed.



Disclaimer: Sizes and Dimensions are Approximate, Actual May Vary.



Lauren Weiss
720-485-1500
lauren@laurenweiss.com
<https://www.laurenweiss.com>

