




16686 Rinker Way
Broomfield, CO 80023
COMMUNITY: Anthem



 Single Family

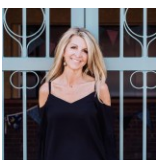
 2502 SQFT

 4 Beds

 2/1 Baths

 3 Car

 0.2 Acre

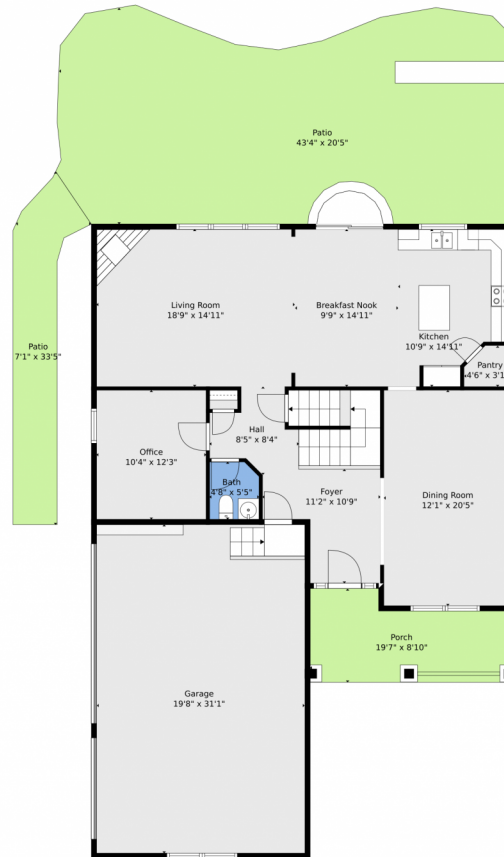


Christy Hepp
303-910-5393
cnishi1068@msn.com
<https://christysellscolorado.com>



Scan code
for more
property
details





TOTAL: 2434 sq. ft
BELOW GROUND: 0 sq. ft, FLOOR 2: 1221 sq. ft, FLOOR 3: 1213 sq. ft
EXCLUDED AREAS: BASEMENT: 1220 sq. ft, GARAGE: 613 sq. ft, PORCH: 146 sq. ft,
PATIO: 951 sq. ft, OPEN TO BELOW: 86 sq. ft

Floor Plan Created By V1photos.com, Measurements Deamed Highly Reliable But Not Guaranteed.



Disclaimer: Sizes and Dimensions are Approximate, Actual May Vary.



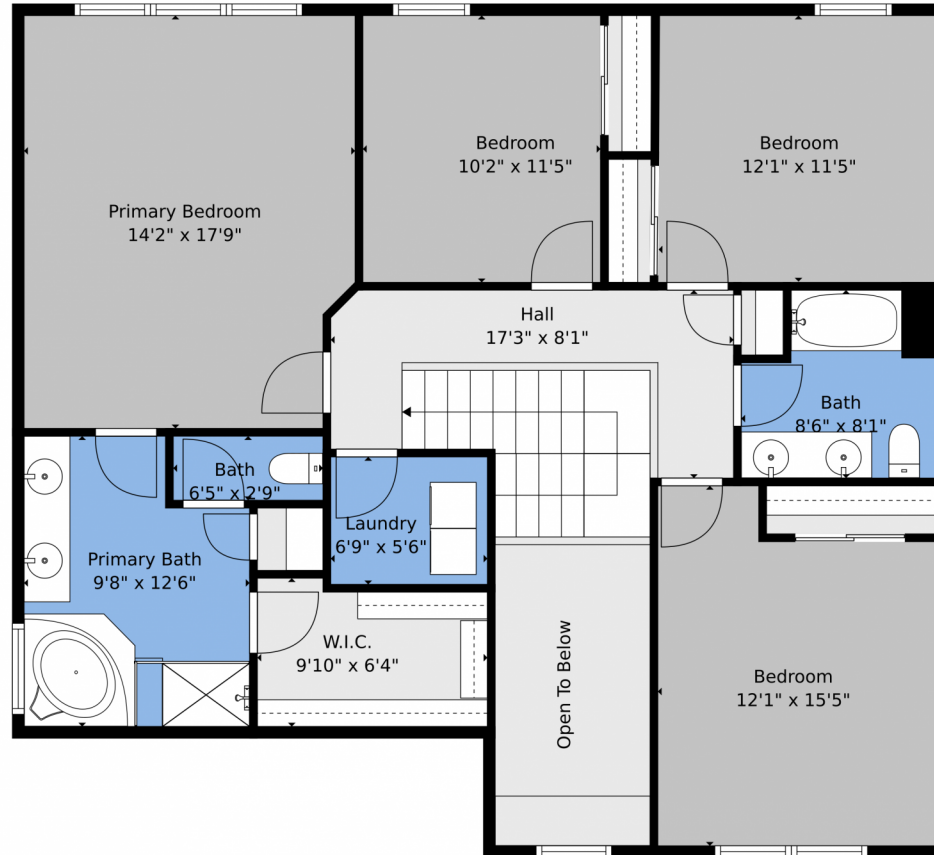
Christy Hepp
303-910-5393
cnishi1068@msn.com
<https://christysellscolorado.com>



Scan code
for more
property
details



16686 Rinker Way, Broomfield, CO 80023 – 2nd Level



TOTAL: 2434 sq. ft
BELOW GROUND: 0 sq. ft, FLOOR 2: 1221 sq. ft, FLOOR 3: 1213 sq. ft
EXCLUDED AREAS: BASEMENT: 1220 sq. ft, GARAGE: 613 sq. ft, PORCH: 146 sq. ft,
PATIO: 951 sq. ft, OPEN TO BELOW: 86 sq. ft

Floor Plan Created By V1photos.com, Measurements Deamed Highly Reliable But Not Guaranteed.



Disclaimer: Sizes and Dimensions are Approximate, Actual May Vary.



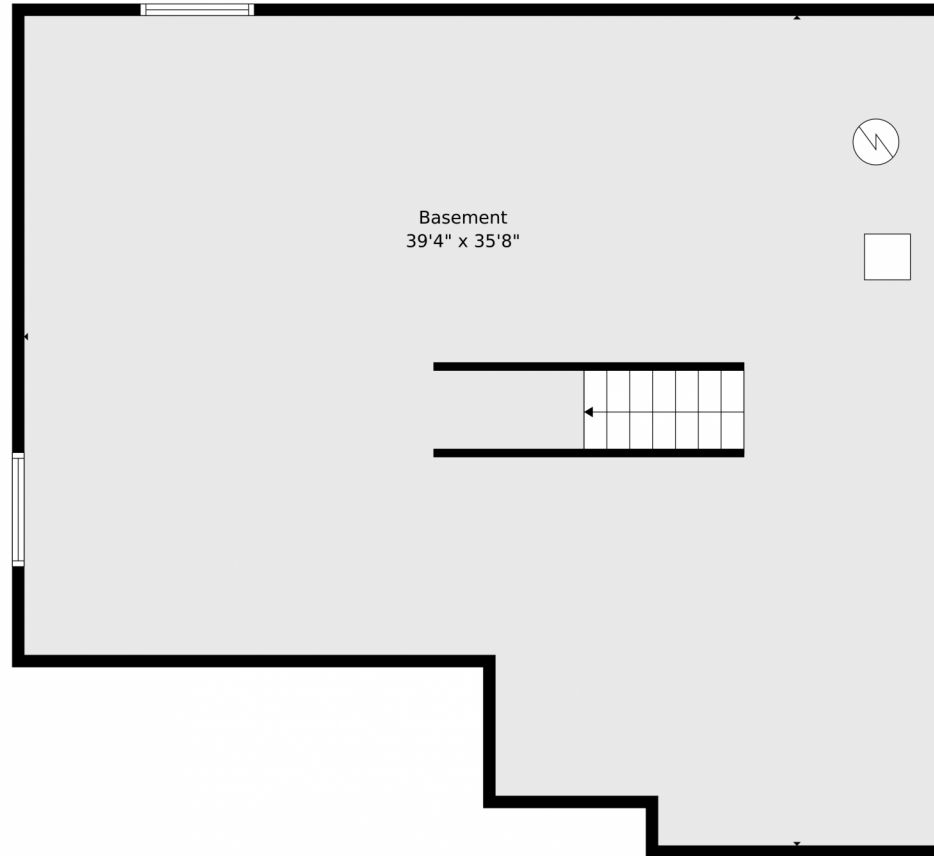
Christy Hepp
303-910-5393
cnishi1068@msn.com
<https://christysellscolorado.com>



Scan code
for more
property
details



16686 Rinker Way, Broomfield, CO 80023 – Lower Level



TOTAL: 2434 sq. ft
BELOW GROUND: 0 sq. ft, FLOOR 2: 1221 sq. ft, FLOOR 3: 1213 sq. ft
EXCLUDED AREAS: BASEMENT: 1220 sq. ft, GARAGE: 613 sq. ft, PORCH: 146 sq. ft,
PATIO: 951 sq. ft, OPEN TO BELOW: 86 sq. ft

Floor Plan Created By V1photos.com, Measurements Deamed Highly Reliable But Not Guaranteed.



Disclaimer: Sizes and Dimensions are Approximate, Actual May Vary.



Christy Hepp
303-910-5393
cnishi1068@msn.com
<https://christysellscolorado.com>



16686 Rinker Way, Broomfield, CO 80023 – All Levels



TOTAL: 2434 sq. ft
BELOW GROUND: 0 sq. ft, FLOOR 2: 1221 sq. ft, FLOOR 3: 1213 sq. ft
EXCLUDED AREAS: BASEMENT: 1220 sq. ft, GARAGE: 613 sq. ft, PORCH: 146 sq. ft,
PATIO: 951 sq. ft, OPEN TO BELOW: 86 sq. ft

Floor Plan Created By V1photos.com, Measurements Deamed Highly Reliable But Not Guaranteed.



Disclaimer: Sizes and Dimensions are Approximate, Actual May Vary.



Christy Hepp
303-910-5393
cnishi1068@msn.com
<https://christysellscolorado.com>



Scan code
for more
property
details

