

Affordable Gem in Award Winning Cherry Creek Schools



Townhouse



1304 SQFT



3 Beds



2 Baths



2 Car



0.04 Acre

PROPERTY DETAILS

Welcome home to this rare opportunity. Located in the master planned community of Mission Viejo and the Cherry Creek School district! You'll love the versatility this floorplan offers. The main floor features a custom built bar area, Formal Living room complete with fireplace, main floor shower, informal living room / breakfast nook which can be framed in as a 4th BEDROOM with its pre-existing closet. Enjoy the outdoors in the privacy of the courtyard with patio and custom decking with built-in bench- great to enjoy quietly, or share with welcomed guests. Upstairs you'll find 3 bedrooms all with excellent natural lighting, and a full bathroom complete with oversized vanity and private bath/ toilet room. This home is located just minutes away from I-225, Cherry Creek State Park, shopping, dining, and more. Also unique compared to other townhomes in the area, this property has access to a great deal of off street parking directly in front of the unit for your guests while you enjoy the 2 CAR GARAGE. This home is move-in ready as is, but you also have the opportunity to make updates, potentially increasing your equity position. Also included is the concrete table with umbrella on the back patio.

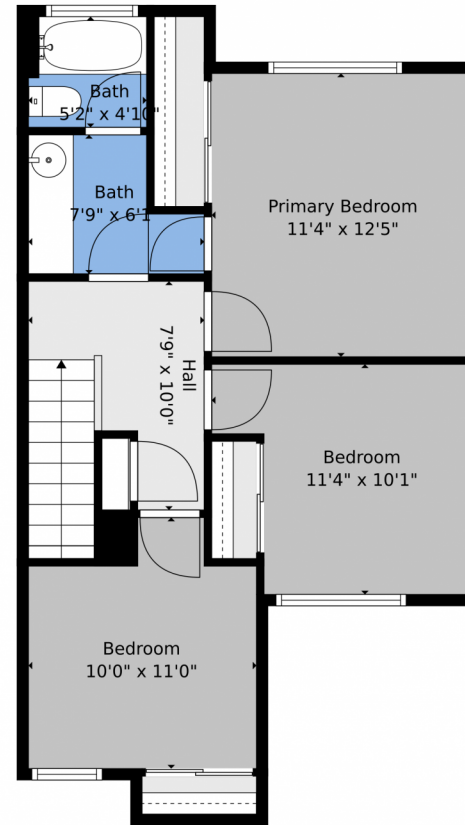
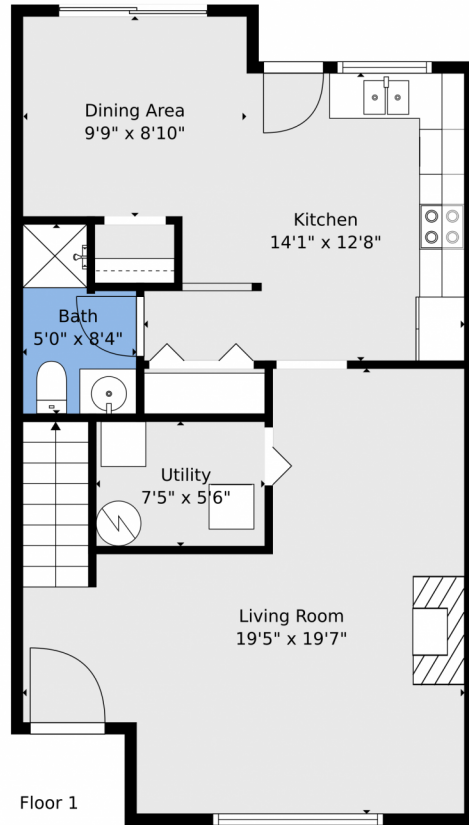


Eve Evans
720-299-8643
Eve@TheRealEveEvans.com
<https://www.TheRealEveEvans.com/>



Scan code for more property details





TOTAL: 1185 sq. ft
BELOW GROUND: 635 sq. ft, FLOOR 2: 550 sq. ft

Floor Plan Created By V1photos.com, Measurements Deamed Highly Reliable But Not Guaranteed.



Disclaimer: Sizes and Dimensions are Approximate, Actual May Vary.



Eve Evans

720-299-8643

Eve@TheRealEveEvans.com

<https://www.TheRealEveEvans.com/>



Scan code
for more
property
details

