



6650 Zuni Street
 Denver, CO 80221
 COMMUNITY: Midtown at Clear Creek

MLS # 8424112
 PRICE \$909,999



Single Family



3279 SQFT



4 Beds



3/1 Baths



2 Car



0.1 Acre

PROPERTY DETAILS

Enjoy stunning mountain views from nearly every room in this prime Midtown lot! The open floor plan welcomes you with natural light, featuring a spacious living room, dining room, and kitchen equipped with quartz countertops, stainless steel appliances, and a large island. The main level also includes a roomy office. Upstairs, find the primary suite and two secondary bedrooms with two full baths. The finished basement offers ample space for movies and games, plus an additional bedroom and 3/4 bath. The patio and backyard are perfect for enjoying the views, with a remote-controlled pergola. Conveniently located near a light rail station, trails, parks, and community amenities. Open House on 2/15 & 2/16 from noon to 3 PM.

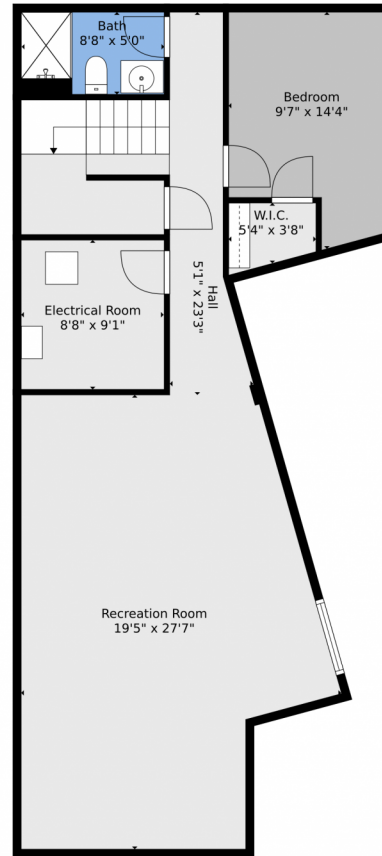


Bobby Stier
 303-949-3139
 bstier1@gmail.com



Scan code
 for more
 property
 details





TOTAL: 2785 sq. ft
BELOW GROUND: 799 sq. ft, FLOOR 2: 967 sq. ft, FLOOR 3: 1019 sq. ft
EXCLUDED AREAS: ELECTRICAL ROOM: 79 sq. ft, GARAGE: 446 sq. ft
Floor Plan Created By V1photos.com, Measurements Deamed Highly Reliable But Not Guaranteed.

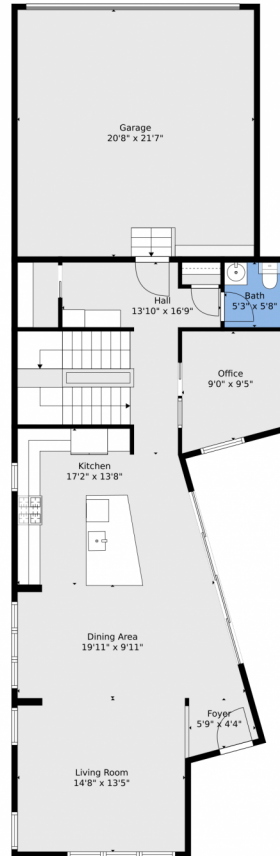


Disclaimer: Sizes and Dimensions are Approximate, Actual May Vary.



Bobby Stier
303-949-3139
bstier1@gmail.com





TOTAL: 2785 sq. ft
BELOW GROUND: 799 sq. ft, FLOOR 2: 967 sq. ft, FLOOR 3: 1019 sq. ft
EXCLUDED AREAS: ELECTRICAL ROOM: 79 sq. ft, GARAGE: 446 sq. ft
Floor Plan Created By V1photos.com, Measurements Deamed Highly Reliable But Not Guaranteed.

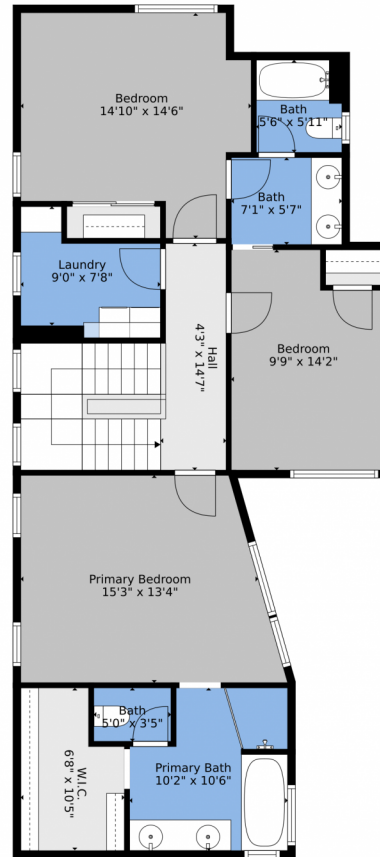


Disclaimer: Sizes and Dimensions are Approximate, Actual May Vary.



Bobby Stier
303-949-3139
bstier1@gmail.com





TOTAL: 2785 sq. ft
BELOW GROUND: 799 sq. ft, FLOOR 2: 967 sq. ft, FLOOR 3: 1019 sq. ft
EXCLUDED AREAS: ELECTRICAL ROOM: 79 sq. ft, GARAGE: 446 sq. ft
Floor Plan Created By V1photos.com, Measurements Deamed Highly Reliable But Not Guaranteed.



Disclaimer: Sizes and Dimensions are Approximate, Actual May Vary.



Bobby Stier
303-949-3139
bstier1@gmail.com





TOTAL: 2785 sq. ft
BELOW GROUND: 799 sq. ft, FLOOR 2: 967 sq. ft, FLOOR 3: 1019 sq. ft
EXCLUDED AREAS: ELECTRICAL ROOM: 79 sq. ft, GARAGE: 446 sq. ft

Floor Plan Created By V1photos.com, Measurements Deamed Highly Reliable But Not Guaranteed.



Disclaimer: Sizes and Dimensions are Approximate, Actual May Vary.



Bobby Stier
303-949-3139
bstier1@gmail.com

