

 Single Family

 2344 SQFT

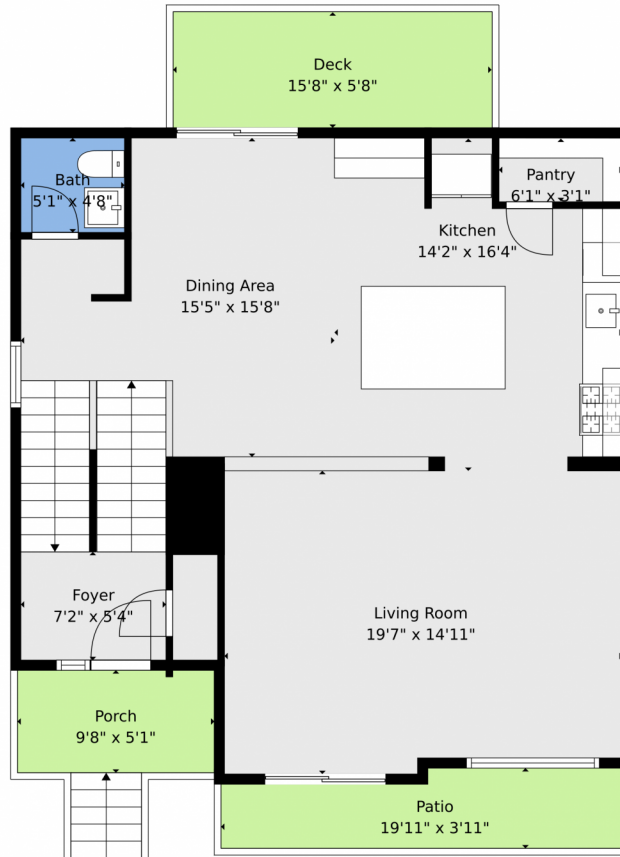
 3 Beds

 3/1 Baths



**Taylor Haas**  
303-665-7368  
taylorh@coloradorpm.com  
<https://www.coloradorpm.com/available-rental-properties-denver>





**TOTAL: 2268 sq. ft**  
FLOOR 1: 530 sq. ft, FLOOR 2: 866 sq. ft, FLOOR 3: 872 sq. ft  
EXCLUDED AREAS: GARAGE: 373 sq. ft, COVERED PATIO: 91 sq. ft, PATIO: 71 sq. ft,  
DECK: 90 sq. ft, PORCH: 49 sq. ft

Floor Plan Created By V1photos.com, Measurements Deamed Highly Reliable But Not Guaranteed.



Disclaimer: Sizes and Dimensions are Approximate, Actual May Vary.

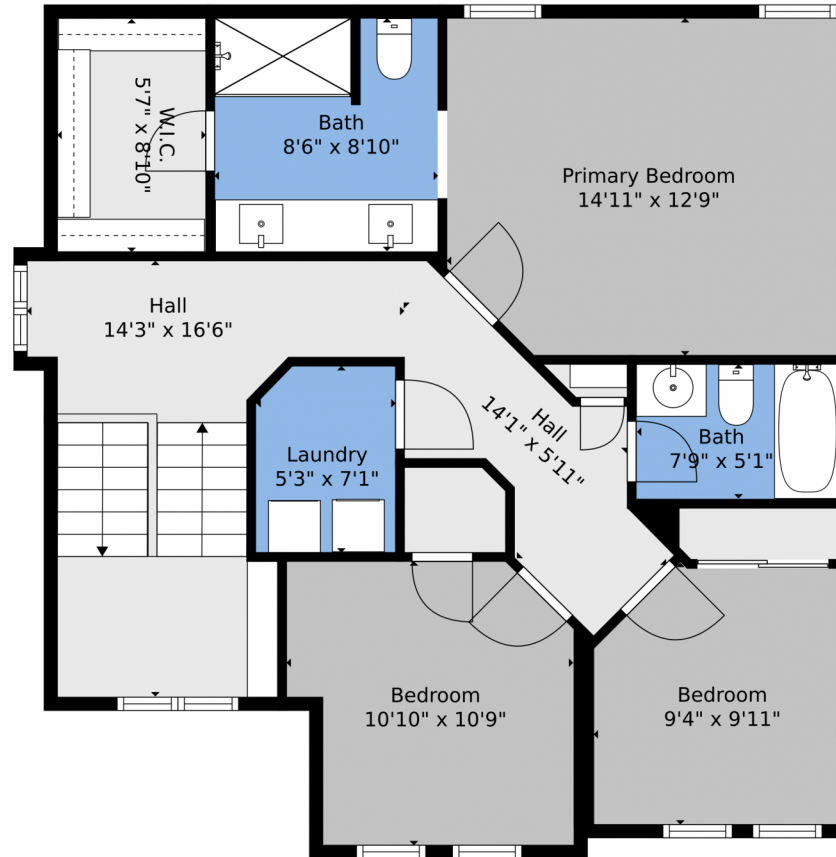


**Taylor Haas**  
303-665-7368  
taylorh@coloradorpm.com  
<https://www.coloradorpm.com/available-rental-properties-denver>



Scan code  
for more  
property  
details





**TOTAL: 2268 sq. ft**  
FLOOR 1: 530 sq. ft, FLOOR 2: 866 sq. ft, FLOOR 3: 872 sq. ft  
EXCLUDED AREAS: GARAGE: 373 sq. ft, COVERED PATIO: 91 sq. ft, PATIO: 71 sq. ft,  
DECK: 90 sq. ft, PORCH: 49 sq. ft

Floor Plan Created By V1photos.com, Measurements Deamed Highly Reliable But Not Guaranteed.



Disclaimer: Sizes and Dimensions are Approximate, Actual May Vary.



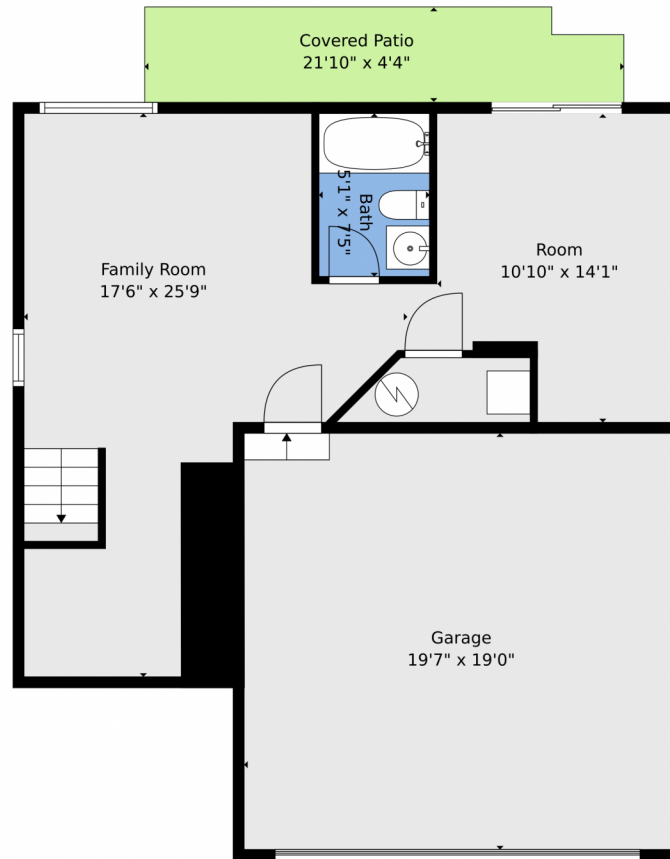
**Taylor Haas**  
303-665-7368  
taylorh@coloradorm.com  
<https://www.coloradorm.com/available-rental-properties-denver>



Scan code  
for more  
property  
details



# 10124 Xanadu Street, Commerce City, CO 80022 – Lower Level



**TOTAL: 2268 sq. ft**  
FLOOR 1: 530 sq. ft, FLOOR 2: 866 sq. ft, FLOOR 3: 872 sq. ft  
EXCLUDED AREAS: GARAGE: 373 sq. ft, COVERED PATIO: 91 sq. ft, PATIO: 71 sq. ft,  
DECK: 90 sq. ft, PORCH: 49 sq. ft

Floor Plan Created By V1photos.com, Measurements Deamed Highly Reliable But Not Guaranteed.



Disclaimer: Sizes and Dimensions are Approximate, Actual May Vary.



**Taylor Haas**  
303-665-7368  
taylorh@coloradorpm.com  
<https://www.coloradorpm.com/available-rental-properties-denver>





# 10124 Xanadu Street, Commerce City, CO 80022 – All Levels



**TOTAL: 2268 sq. ft**  
FLOOR 1: 530 sq. ft, FLOOR 2: 866 sq. ft, FLOOR 3: 872 sq. ft  
EXCLUDED AREAS: GARAGE: 373 sq. ft, COVERED PATIO: 91 sq. ft, PATIO: 71 sq. ft,  
DECK: 90 sq. ft, PORCH: 49 sq. ft

Floor Plan Created By V1photos.com, Measurements Deamed Highly Reliable But Not Guaranteed.



Disclaimer: Sizes and Dimensions are Approximate, Actual May Vary.



**Taylor Haas**  
303-665-7368  
taylorh@coloradorpm.com  
<https://www.coloradorpm.com/available-rental-properties-denver>



Scan code  
for more  
property  
details

