



9784 South Iris Court
 Littleton, CO 80127
 COMMUNITY: Trailmark



floorplan_single_1



Single Family



3625 SQFT



5 Beds



3/1 Baths



2 Car



0.25 Acre



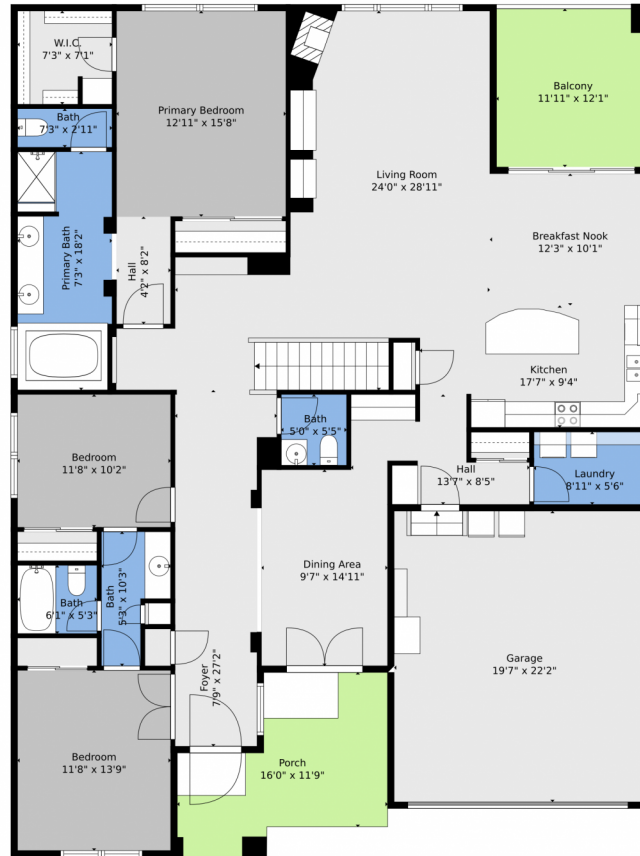
Bonnie Moore
 720-272-5930
 bmoore2424@icloud.com



Scan code
 for more
 property
 details



9784 South Iris Court, Littleton, CO 80127 – Main



TOTAL: 3569 sq. ft
BELOW GROUND: 1351 sq. ft, FLOOR 2: 2218 sq. ft
EXCLUDED AREAS: BASEMENT: 772 sq. ft, PATIO: 158 sq. ft, GARAGE: 434 sq. ft,
BALCONY: 144 sq. ft, PORCH: 164 sq. ft

Floor Plan Created By V1photos.com, Measurements Deamed Highly Reliable But Not Guaranteed.



Disclaimer: Sizes and Dimensions are Approximate, Actual May Vary.



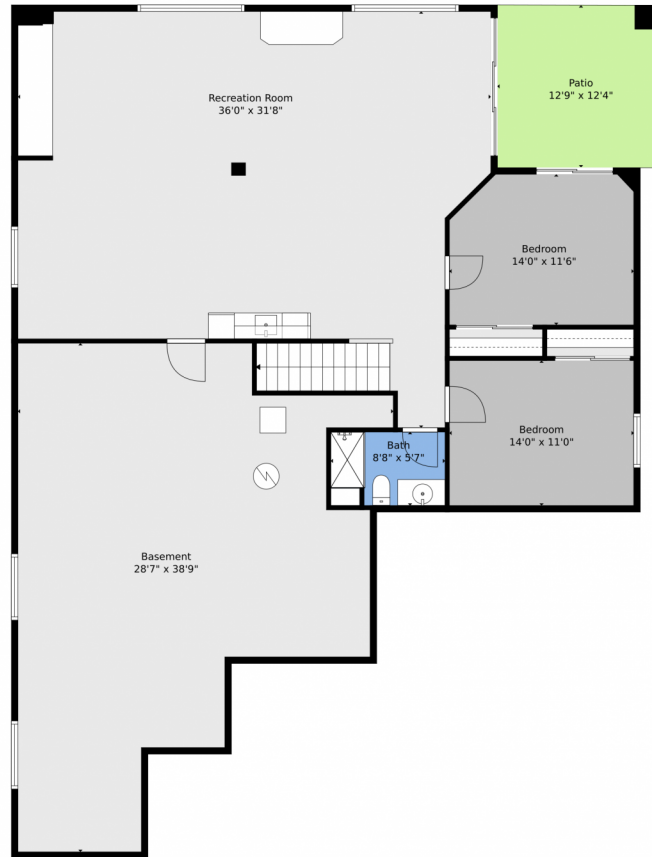
Bonnie Moore
720-272-5930
bmoore2424@icloud.com



Scan code
for more
property
details



9784 South Iris Court, Littleton, CO 80127 – Basement



TOTAL: 3569 sq. ft
BELOW GROUND: 1351 sq. ft, FLOOR 2: 2218 sq. ft
EXCLUDED AREAS: BASEMENT: 772 sq. ft, PATIO: 158 sq. ft, GARAGE: 434 sq. ft,
BALCONY: 144 sq. ft, PORCH: 164 sq. ft

Floor Plan Created By V1photos.com, Measurements Deamed Highly Reliable But Not Guaranteed.



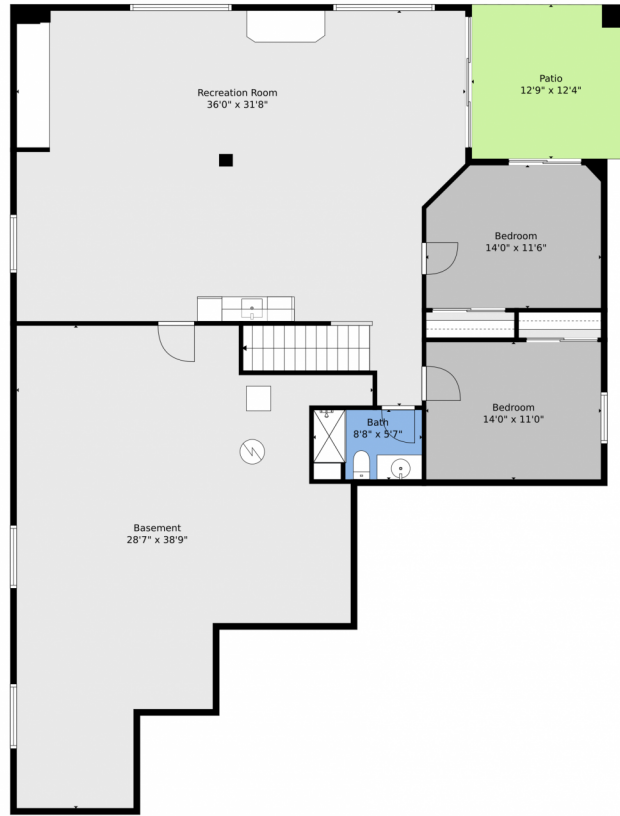
Disclaimer: Sizes and Dimensions are Approximate, Actual May Vary.



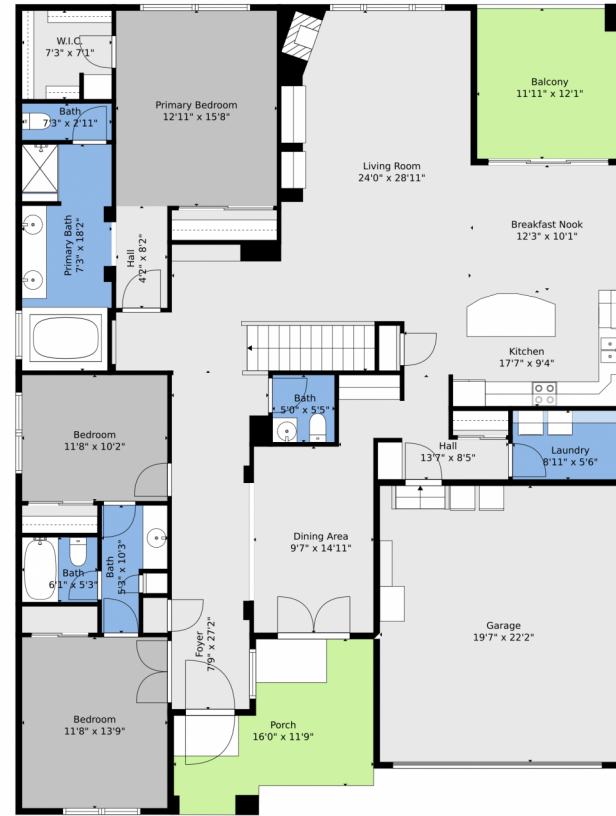
Bonnie Moore
720-272-5930
bmoore2424@icloud.com



9784 South Iris Court, Littleton, CO 80127 – All Levels



Floor 1



Floor 2

TOTAL: 3569 sq. ft
BELOW GROUND: 1351 sq. ft, FLOOR 2: 2218 sq. ft
EXCLUDED AREAS: BASEMENT: 772 sq. ft, PATIO: 158 sq. ft, GARAGE: 434 sq. ft,
BALCONY: 144 sq. ft, PORCH: 164 sq. ft

Floor Plan Created By V1photos.com, Measurements Deamed Highly Reliable But Not Guaranteed.



Disclaimer: Sizes and Dimensions are Approximate, Actual May Vary.



Bonnie Moore
720-272-5930
bmoore2424@icloud.com



Scan code
for more
property
details

