



465 Orchard Drive
 Louisville, CO 80027
 COMMUNITY: Meadows at Coal Creek

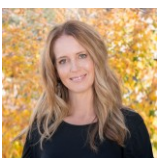
PRICE
 \$1,025,000



Single Family 3616 SQFT 4 Beds 3 Baths 2 Car 0.2 Acre

PROPERTY DETAILS

This ranch-style home in the desirable Meadows at Coal Creek features a well-designed floor plan ideal for modern living and entertaining. Enter through a welcoming foyer with new flooring. The spacious living room is filled with natural light, while the separate dining room boasts a stunning chandelier. The efficient kitchen offers ample counter space, oak cabinets, a large pantry, and all appliances, making it perfect for any chef. The family room includes a cozy wood fireplace, and a large sliding door opens to a beautiful covered deck. The main level includes a primary bedroom with a walk-in closet and updated 5-piece bath, plus two additional bedrooms and laundry. The basement has a wet bar, rec space, a 4th bedroom, and a 3/4 bath, ideal for guests. The outdoor space features a private, tiered yard perfect for gatherings. With newer flooring and paint, this home is move-in ready.

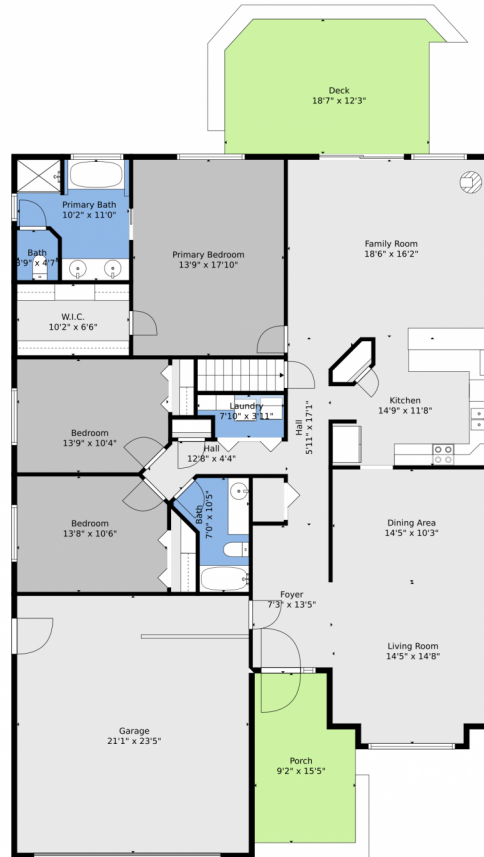


Terri Ellerington
 303-929-8116
 terri@elevated-team.com
<https://www.remax.com/real-estate-agents/terri-ellerington-louisville-co/10205130>



Scan code
 for more
 property
 details





TOTAL: 2729 sq. ft
BELOW GROUND: 794 sq. ft, FLOOR 2: 1935 sq. ft
EXCLUDED AREAS: ELECTRICAL ROOM: 229 sq. ft, PORCH: 128 sq. ft, DECK: 226 sq. ft,
GARAGE: 493 sq. ft

Floor Plan Created By V1photos.com, Measurements Deamed Highly Reliable But Not Guaranteed.



Disclaimer: Sizes and Dimensions are Approximate, Actual May Vary.



Terri Ellerington

303-929-8116

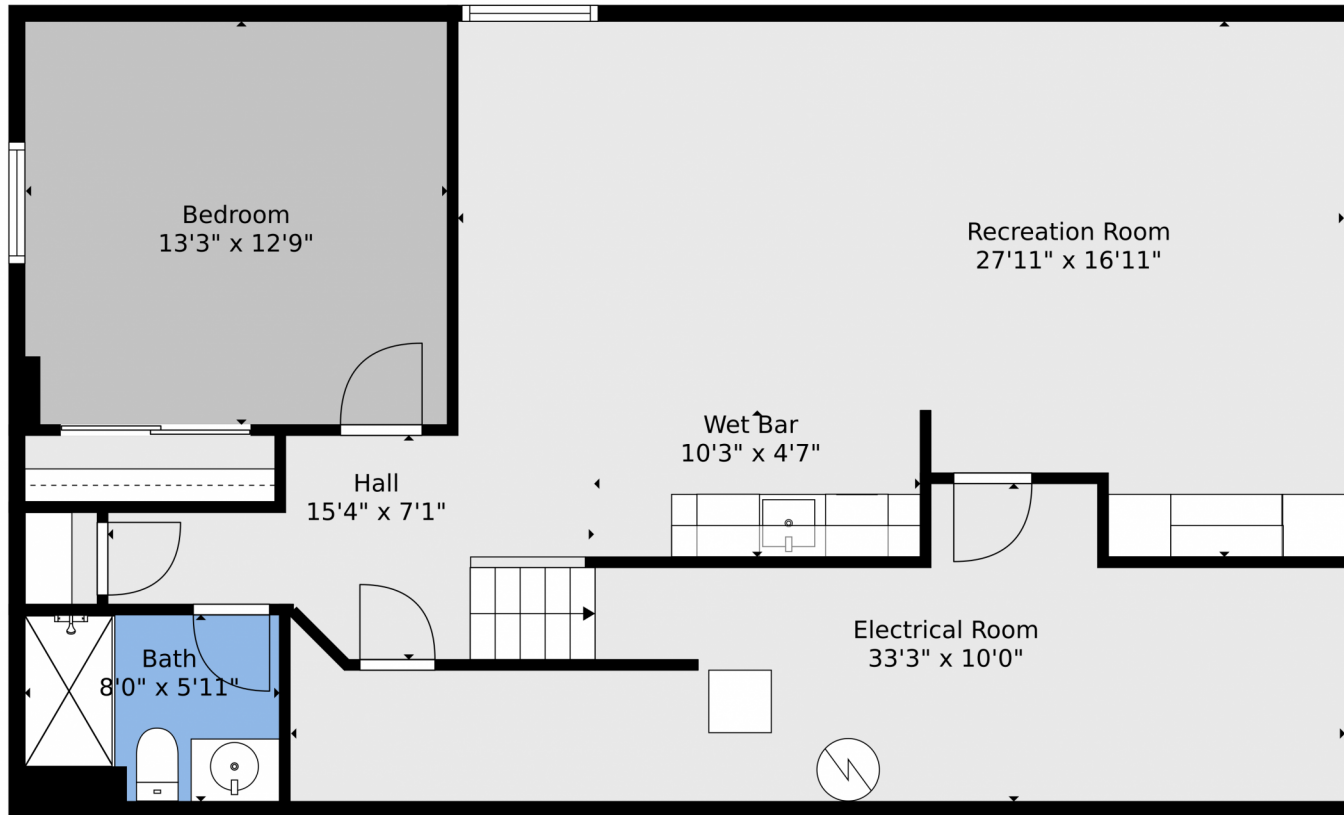
terri@elevated-team.com

<https://www.remax.com/real-estate-agents/terri-ellerington-louisville-co/102051301>



Scan code
for more
property
details





TOTAL: 2729 sq. ft
BELOW GROUND: 794 sq. ft, FLOOR 2: 1935 sq. ft
EXCLUDED AREAS: ELECTRICAL ROOM: 229 sq. ft, PORCH: 128 sq. ft, DECK: 226 sq. ft,
GARAGE: 493 sq. ft

Floor Plan Created By V1photos.com. Measurements Deamed Highly Reliable But Not Guaranteed.

Disclaimer: Sizes and Dimensions are Approximate, Actual May Vary.



Terri Ellerington

303-929-8116

terri@elevated-team.com

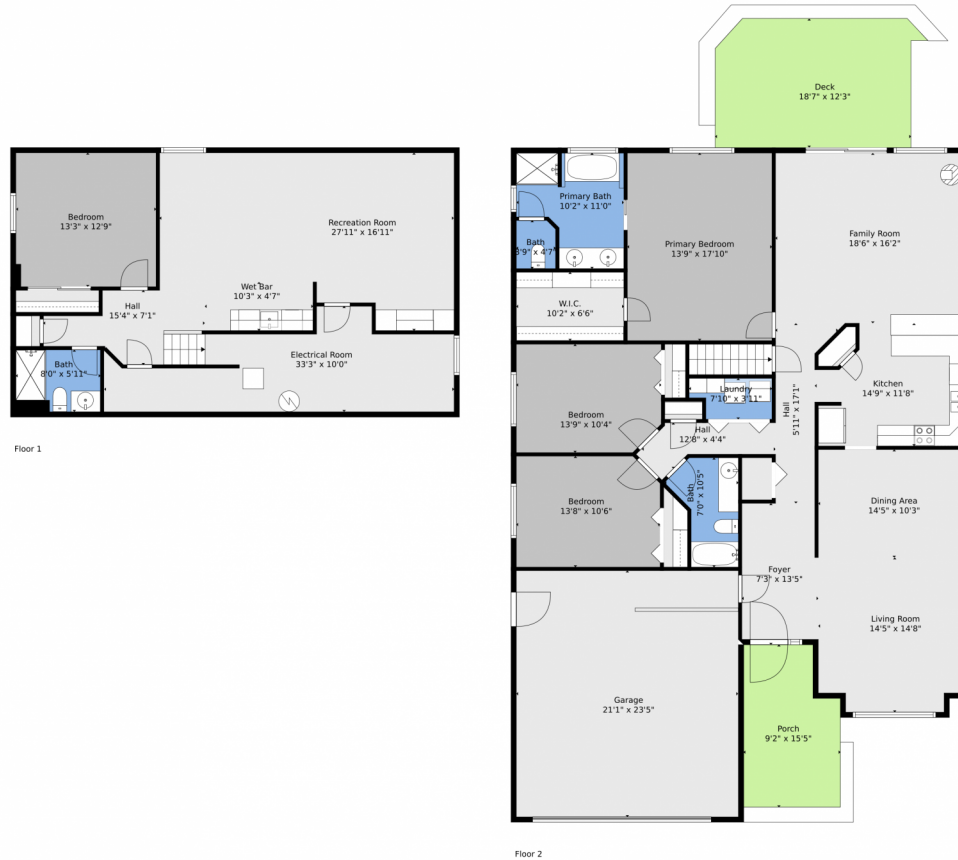
<https://www.remax.com/real-estate-agents/terri-ellerington-louisville-co/102051301>



Scan code
for more
property
details



465 Orchard Drive, Louisville, CO 80027 – All Levels



TOTAL: 2729 sq. ft
BELOW GROUND: 794 sq. ft, FLOOR 2: 1935 sq. ft
EXCLUDED AREAS: ELECTRICAL ROOM: 229 sq. ft, PORCH: 128 sq. ft, DECK: 226 sq. ft,
GARAGE: 493 sq. ft

Floor Plan Created By V1photos.com, Measurements Deamed Highly Reliable But Not Guaranteed.



Disclaimer: Sizes and Dimensions are Approximate, Actual May Vary.



Terri Ellerington

303-929-8116

terri@elevated-team.com

<https://www.remax.com/real-estate-agents/terri-ellerington-louisville-co/102051301>



Scan code
for more
property
details

