



740 Boxwood Lane
Longmont, CO 80503



Single Family



1508 SQFT

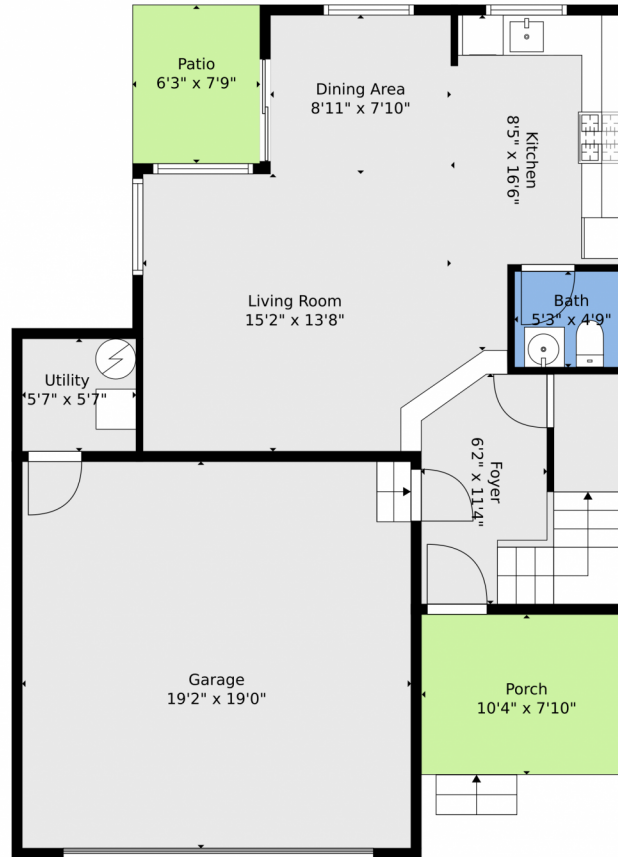


AJ Chamberlin
303-588-8999
aj@phoenixctd.com



Scan code
for more
property
details





TOTAL: 1368 sq. ft
BELOW GROUND: 533 sq. ft, FLOOR 2: 835 sq. ft
EXCLUDED AREAS: PORCH: 82 sq. ft, PATIO: 49 sq. ft, GARAGE: 364 sq. ft,
UTILITY: 31 sq. ft, OPEN TO BELOW: 39 sq. ft

Floor Plan Created By V1photos.com, Measurements Deamed Highly Reliable But Not Guaranteed.



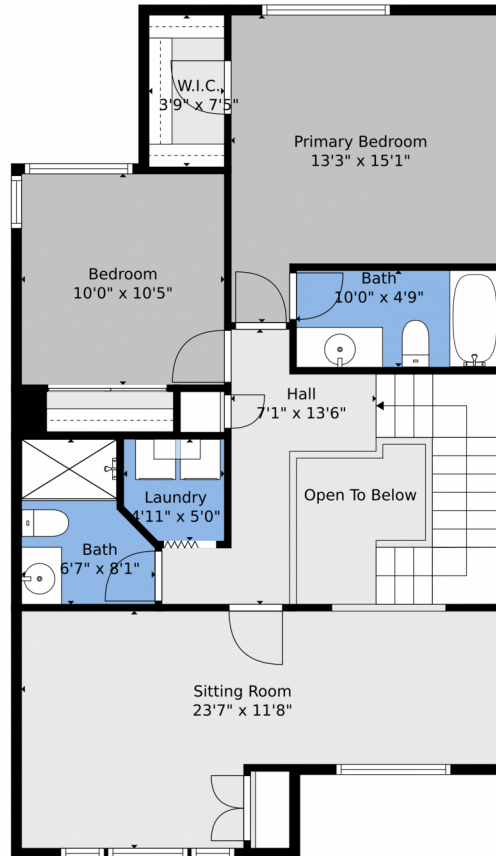
Disclaimer: Sizes and Dimensions are Approximate, Actual May Vary.



AJ Chamberlin
303-588-8999
aj@phoenixctd.com



740 Boxwood Lane, Longmont, CO 80503 – 2nd Level



TOTAL: 1368 sq. ft
BELOW GROUND: 533 sq. ft, FLOOR 2: 835 sq. ft
EXCLUDED AREAS: PORCH: 82 sq. ft, PATIO: 49 sq. ft, GARAGE: 364 sq. ft,
UTILITY: 31 sq. ft, OPEN TO BELOW: 39 sq. ft

Floor Plan Created By V1photos.com, Measurements Deamed Highly Reliable But Not Guaranteed.



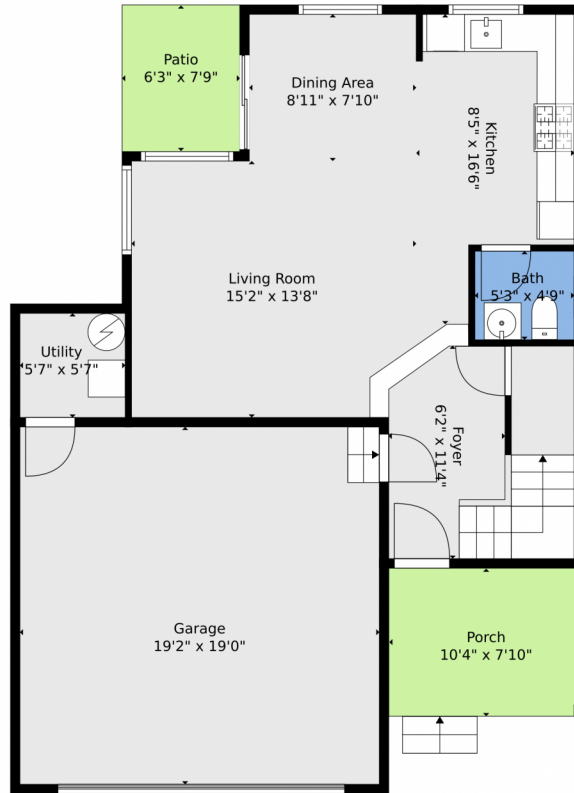
Disclaimer: Sizes and Dimensions are Approximate, Actual May Vary.



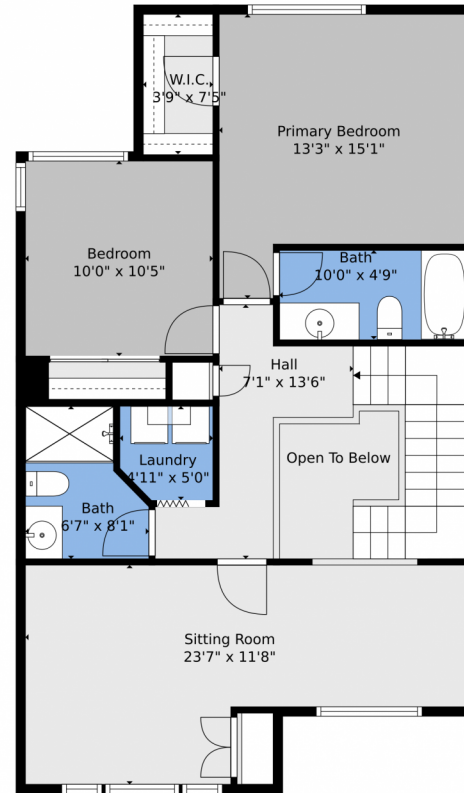
AJ Chamberlin
303-588-8999
aj@phoenixctd.com



740 Boxwood Lane, Longmont, CO 80503 – All Levels



Floor 1



Floor 2

TOTAL: 1368 sq. ft
BELOW GROUND: 533 sq. ft, FLOOR 2: 835 sq. ft
EXCLUDED AREAS: PORCH: 82 sq. ft, PATIO: 49 sq. ft, GARAGE: 364 sq. ft,
UTILITY: 31 sq. ft, OPEN TO BELOW: 39 sq. ft

Floor Plan Created By V1photos.com, Measurements Deamed Highly Reliable But Not Guaranteed.



Disclaimer: Sizes and Dimensions are Approximate, Actual May Vary.



AJ Chamberlin
303-588-8999
aj@phoenixctd.com

