

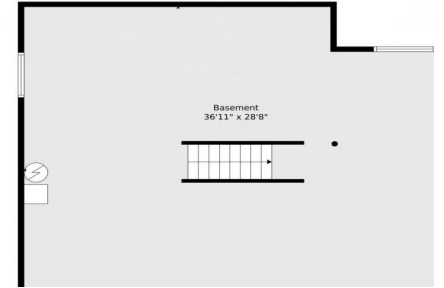
Main



2nd Level



Lower Level



All Levels



Single Family



3700 SQFT



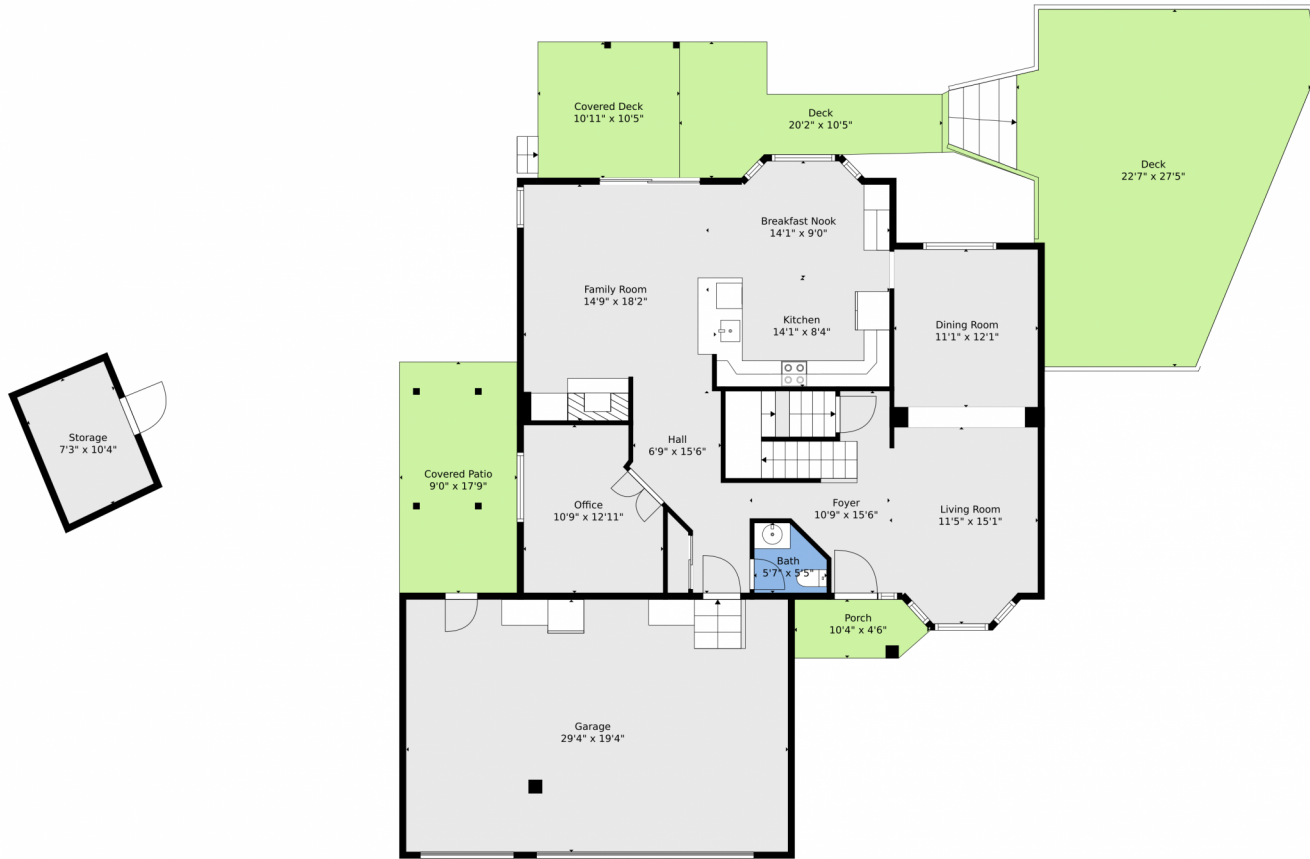
AJ Chamberlin
303-588-8999
aj@phoenixctd.com



Scan code
for more
property
details



1452 Cherrywood Way, Longmont, CO 80504 – Main



TOTAL: 2446 sq. ft
BELOW GROUND: 0 sq. ft, FLOOR 2: 1212 sq. ft, FLOOR 3: 1234 sq. ft
EXCLUDED AREAS: BASEMENT: 1009 sq. ft, GARAGE: 569 sq. ft, COVERED PATIO: 160 sq. ft,
COVERED DECK: 114 sq. ft, DECK: 656 sq. ft, PORCH: 42 sq. ft,
STORAGE: 75 sq. ft, OPEN TO BELOW: 83 sq. ft

Floor Plan Created By V1photos.com. Measurements Deamed Highly Reliable But Not Guaranteed.



Disclaimer: Sizes and Dimensions are Approximate, Actual May Vary.



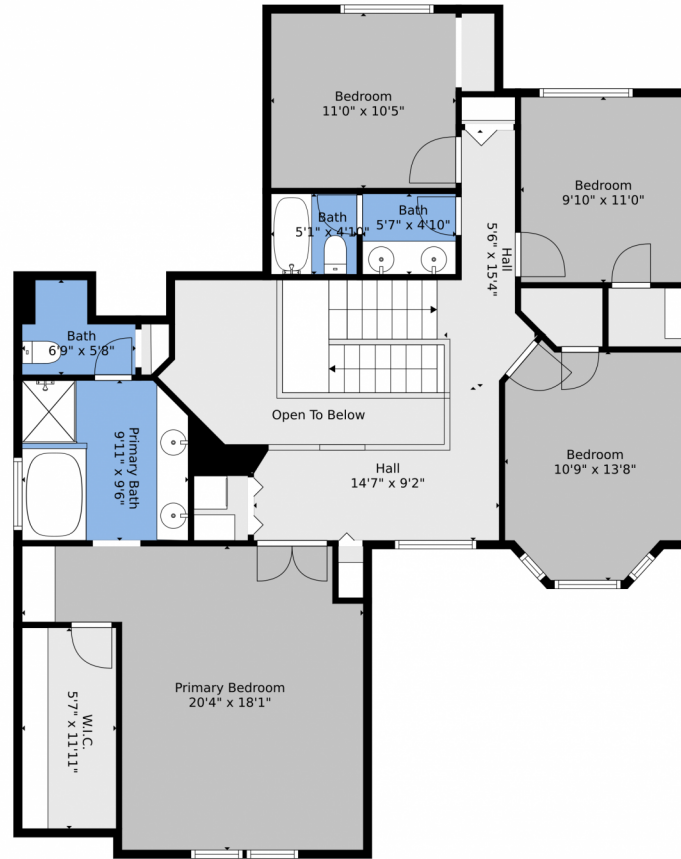
AJ Chamberlin
303-588-8999
aj@phoenixctd.com



Scan code
for more
property
details



1452 Cherrywood Way, Longmont, CO 80504 – 2nd Level



TOTAL: 2446 sq. ft
BELOW GROUND: 0 sq. ft, FLOOR 2: 1212 sq. ft, FLOOR 3: 1234 sq. ft
EXCLUDED AREAS: BASEMENT: 1009 sq. ft, GARAGE: 569 sq. ft, COVERED PATIO: 160 sq. ft,
COVERED DECK: 114 sq. ft, DECK: 656 sq. ft, PORCH: 42 sq. ft,
STORAGE: 75 sq. ft, OPEN TO BELOW: 83 sq. ft

Floor Plan Created By V1photos.com, Measurements Deamed Highly Reliable But Not Guaranteed.



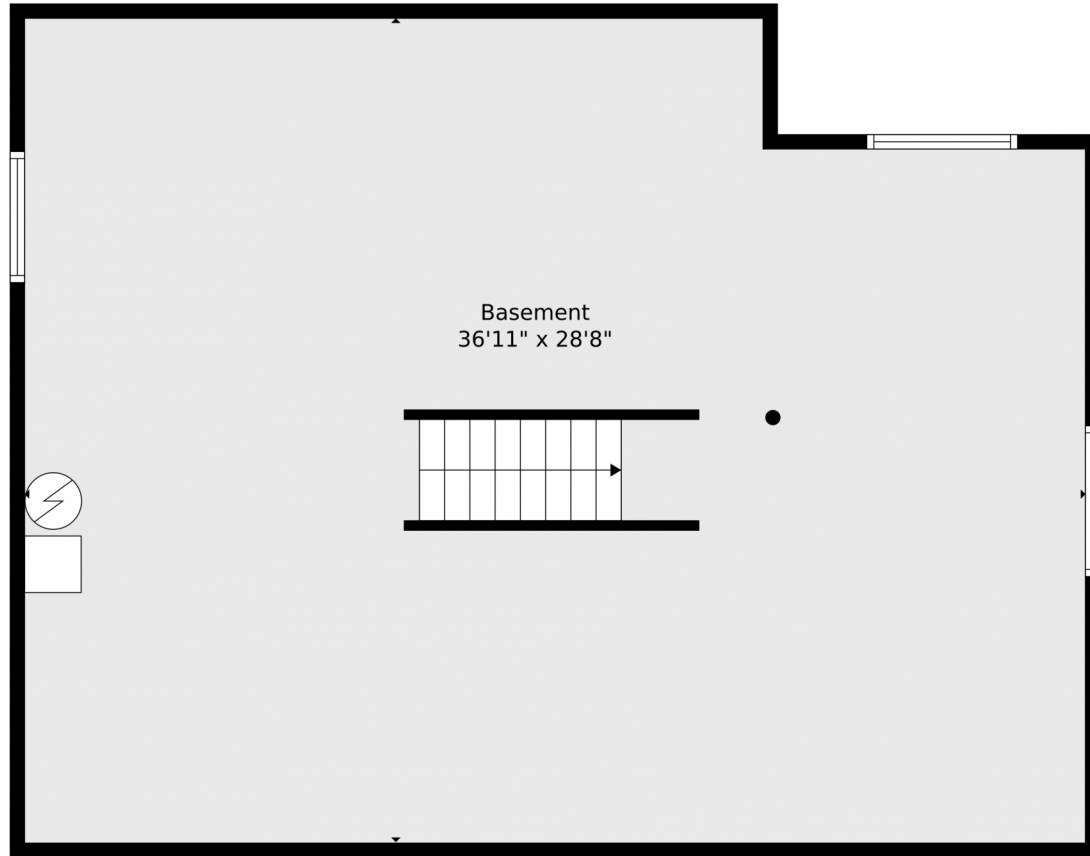
Disclaimer: Sizes and Dimensions are Approximate, Actual May Vary.



AJ Chamberlin
303-588-8999
aj@phoenixctd.com



1452 Cherrywood Way, Longmont, CO 80504 – Lower Level



TOTAL: 2446 sq. ft
BELOW GROUND: 0 sq. ft, FLOOR 2: 1212 sq. ft, FLOOR 3: 1234 sq. ft
EXCLUDED AREAS: BASEMENT: 1009 sq. ft, GARAGE: 569 sq. ft, COVERED PATIO: 160 sq. ft,
COVERED DECK: 114 sq. ft, DECK: 656 sq. ft, PORCH: 42 sq. ft,
STORAGE: 75 sq. ft, OPEN TO BELOW: 83 sq. ft

Floor Plan Created By V1photos.com. Measurements Deamed Highly Reliable But Not Guaranteed.



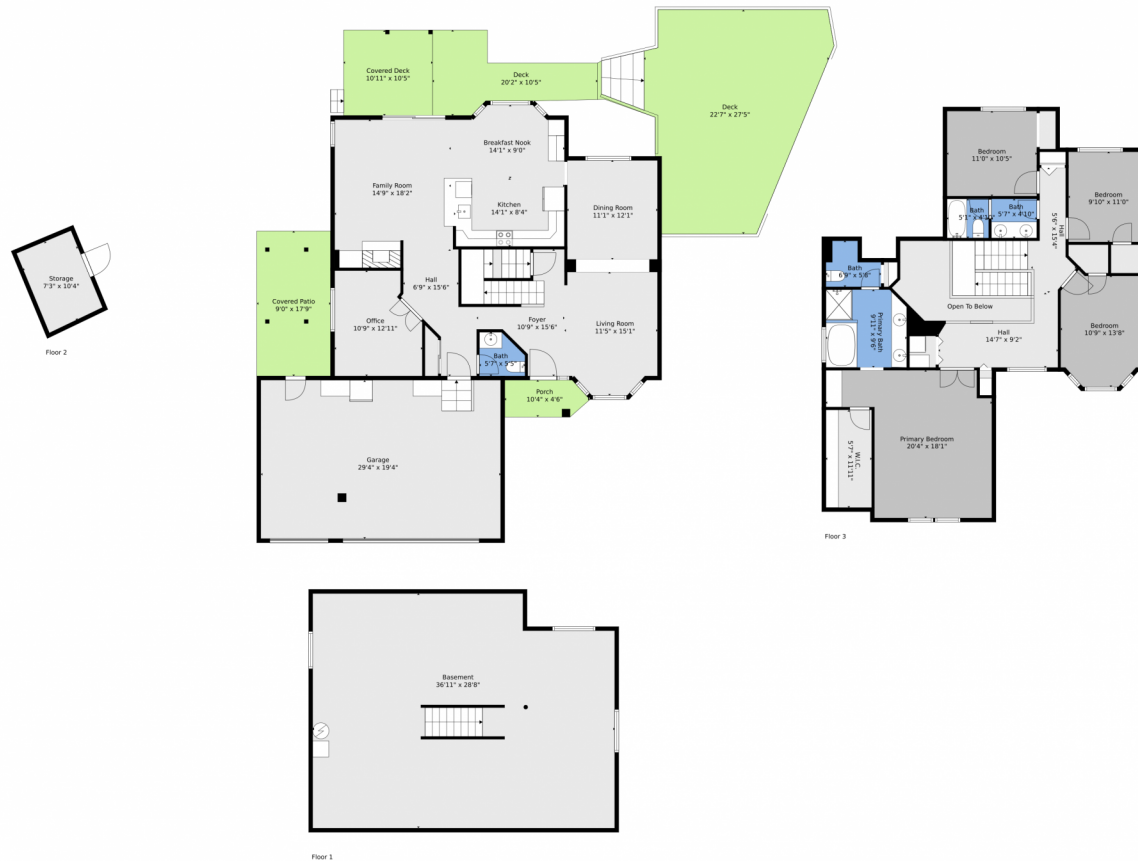
Disclaimer: Sizes and Dimensions are Approximate, Actual May Vary.



AJ Chamberlin
303-588-8999
aj@phoenixctd.com



1452 Cherrywood Way, Longmont, CO 80504 – All Levels



TOTAL: 2446 sq. ft
 BELOW GROUND: 0 sq. ft, FLOOR 2: 1212 sq. ft, FLOOR 3: 1234 sq. ft
 EXCLUDED AREAS: BASEMENT: 1009 sq. ft, GARAGE: 569 sq. ft, COVERED PATIO: 160 sq. ft,
 COVERED DECK: 114 sq. ft, DECK: 656 sq. ft, PORCH: 42 sq. ft,
 STORAGE: 75 sq. ft, OPEN TO BELOW: 83 sq. ft

Floor Plan Created By V1photos.com, Measurements Deamed Highly Reliable But Not Guaranteed.



Disclaimer: Sizes and Dimensions are Approximate, Actual May Vary.



AJ Chamberlin
 303-588-8999
 aj@phoenixctd.com



Scan code
 for more
 property
 details

