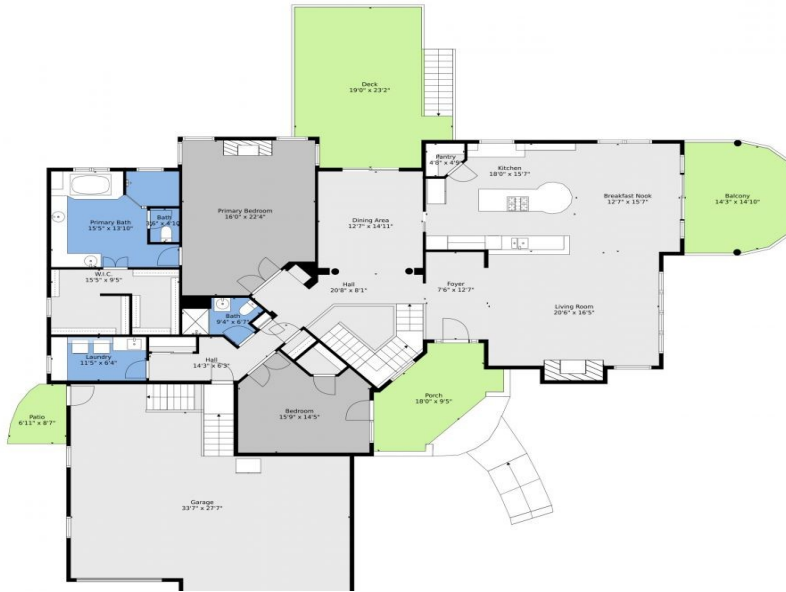




3805 Glenneyre Drive
Longmont, CO 80503

Main



Lower Level



All Levels



Single Family



5248 SQFT



Mark Brigham
303-883-3947
markb@boulderco.com



Scan code
for more
property
details



3805 Glenneyre Drive, Longmont, CO 80503 – Main



TOTAL: 4707 sq. ft
BELOW GROUND: 2207 sq. ft, FLOOR 2: 2500 sq. ft
EXCLUDED AREAS: STORAGE: 187 sq. ft, ELECTRICAL ROOM: 59 sq. ft, PATIO: 433 sq. ft,
BAY WINDOW: 15 sq. ft, GARAGE: 867 sq. ft, PORCH: 156 sq. ft,
BALCONY: 200 sq. ft, DECK: 389 sq. ft, FIREPLACE: 17 sq. ft

Floor Plan Created By V1photos.com, Measurements Deamed Highly Reliable But Not Guaranteed.



Disclaimer: Sizes and Dimensions are Approximate, Actual May Vary.



Mark Brigham
303-883-3947
markb@boulderco.com



Scan code
for more
property
details



3805 Glenneyre Drive, Longmont, CO 80503 – Lower Level



TOTAL: 4707 sq. ft
BELOW GROUND: 2207 sq. ft, FLOOR 2: 2500 sq. ft
EXCLUDED AREAS: STORAGE: 187 sq. ft, ELECTRICAL ROOM: 59 sq. ft, PATIO: 433 sq. ft,
BAY WINDOW: 15 sq. ft, GARAGE: 867 sq. ft, PORCH: 156 sq. ft,
BALCONY: 200 sq. ft, DECK: 389 sq. ft, FIREPLACE: 17 sq. ft

Floor Plan Created By V1photos.com, Measurements Deamed Highly Reliable But Not Guaranteed.



Disclaimer: Sizes and Dimensions are Approximate, Actual May Vary.



Mark Brigham
303-883-3947
markb@boulderco.com



Scan code
for more
property
details



3805 Gleneyre Drive, Longmont, CO 80503 – All Levels



TOTAL: 4707 sq. ft
BELOW GROUND: 2207 sq. ft, FLOOR 2: 2500 sq. ft
EXCLUDED AREAS: STORAGE: 187 sq. ft, ELECTRICAL ROOM: 59 sq. ft, PATIO: 433 sq. ft,
BAY WINDOW: 15 sq. ft, GARAGE: 867 sq. ft, PORCH: 156 sq. ft,
BALCONY: 200 sq. ft, DECK: 389 sq. ft, FIREPLACE: 17 sq. ft

Floor Plan Created By V1photos.com, Measurements Deamed Highly Reliable But Not Guaranteed.



Disclaimer: Sizes and Dimensions are Approximate, Actual May Vary.



Mark Brigham
303-883-3947
markb@boulderco.com



Scan code
for more
property
details

