



12022 West Dakota Drive  
 Lakewood, CO 80228  
 COMMUNITY: Green Mountain Village

MLS # 7127301  
 PRICE \$665,000



Single Family  
 2394 SQFT  
 5 Beds  
 3 Baths  
 2 Car  
 0.3 Acre

## PROPERTY DETAILS

Charming Ranch-Style Home in Green Mountain Village! This updated ranch features classic charm with hardwood floors and abundant natural light from a large bay window. The main floor includes 3 spacious bedrooms, including a primary suite with a remodeled bath, plus a full guest bath. The stylish kitchen offers butcher block countertops, stainless steel appliances, and ample storage. The finished basement has 2 additional bedrooms, a full bath, and a large family room. Enjoy a low-maintenance exterior with brick, a huge fenced backyard, and a covered patio for summer BBQs. There's an oversized driveway with RV parking and a two-car garage. No HOA for added freedom! Conveniently located near Alameda, 6th Avenue, and I-70 for easy commutes and outdoor adventures. Schedule your showing today!

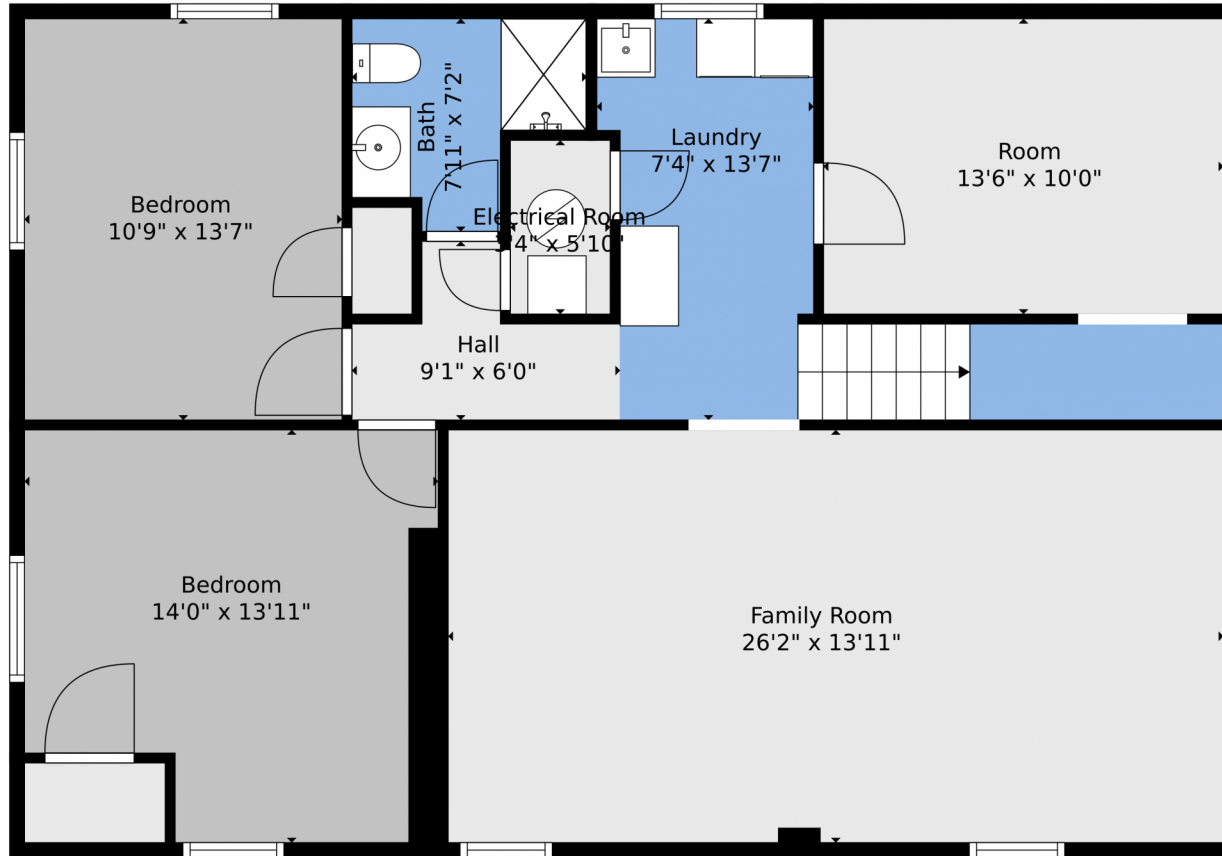


**Karen Esquibel**  
 720-434-4001  
 kesquibel@msn.com

Scan code for more property details



12022 West Dakota Drive, Lakewood, CO 80228 – Lower Level



**TOTAL: 2236 sq. ft**  
BELOW GROUND: 1108 sq. ft, FLOOR 2: 1128 sq. ft  
EXCLUDED AREAS: ELECTRICAL ROOM: 20 sq. ft, COVERED PATIO: 250 sq. ft, PATIO: 601 sq. ft,  
PORCH: 68 sq. ft, GARAGE: 447 sq. ft, BAY WINDOW: 14 sq. ft  
Floor Plan Created By V1photos.com, Measurements Deamed Highly Reliable But Not Guaranteed.



Disclaimer: Sizes and Dimensions are Approximate, Actual May Vary.



**Karen Esquibel**  
720-434-4001  
kesquibel@msn.com



# 12022 West Dakota Drive, Lakewood, CO 80228 – Main



**TOTAL: 2236 sq. ft**  
BELOW GROUND: 1108 sq. ft, FLOOR 2: 1128 sq. ft  
EXCLUDED AREAS: ELECTRICAL ROOM: 20 sq. ft, COVERED PATIO: 250 sq. ft, PATIO: 601 sq. ft,  
PORCH: 68 sq. ft, GARAGE: 447 sq. ft, BAY WINDOW: 14 sq. ft

Floor Plan Created By V1photos.com, Measurements Deamed Highly Reliable But Not Guaranteed.



Disclaimer: Sizes and Dimensions are Approximate, Actual May Vary.



**Karen Esquibel**  
720-434-4001  
kesquibel@msn.com



# 12022 West Dakota Drive, Lakewood, CO 80228 – All Levels



**TOTAL: 2236 sq. ft**  
BELOW GROUND: 1108 sq. ft, FLOOR 2: 1128 sq. ft  
EXCLUDED AREAS: ELECTRICAL ROOM: 20 sq. ft, COVERED PATIO: 250 sq. ft, PATIO: 601 sq. ft,  
PORCH: 68 sq. ft, GARAGE: 447 sq. ft, BAY WINDOW: 14 sq. ft

Floor Plan Created By V1photos.com, Measurements Deamed Highly Reliable But Not Guaranteed.



Disclaimer: Sizes and Dimensions are Approximate, Actual May Vary.



**Karen Esquibel**  
720-434-4001  
kesquibel@msn.com

