



9183 West Cedar Drive #2
Lakewood, CO 80226
COMMUNITY: Westford Condos

MLS # 5604877
PRICE \$425,000



Condominium



1250 SQFT



2 Beds



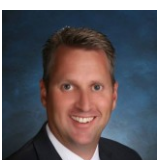
2/1 Baths



1 Car

PROPERTY DETAILS

This charming 2-bedroom, 3-bathroom townhouse-style condo offers comfort and convenience near the CCU campus. The main floor features a primary bedroom with an en-suite bath and an attached 1-car garage for easy access. An unfinished basement provides storage or customization options. The spacious kitchen includes a breakfast bar and connects to a cozy living room with a gas fireplace. Upstairs, a versatile loft/bedroom with a full bath adds privacy and flexibility. With a new furnace and A/C system (2022) and included appliances, this home is ready for you. Perfect for first-time buyers or investors seeking a low-maintenance lifestyle.



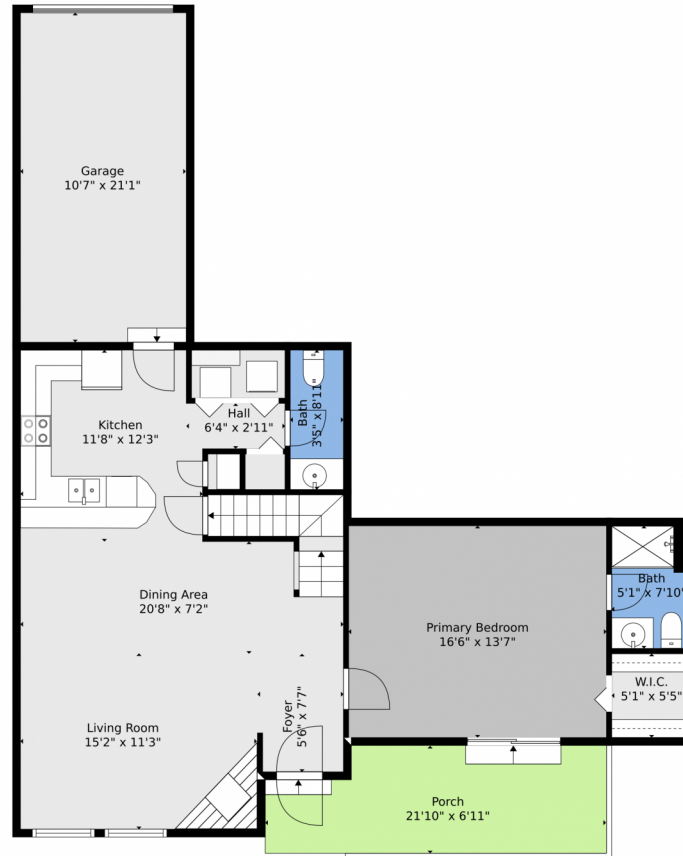
Greg Dach
303-525-9006
gregdach@remax.net



Scan code
for more
property
details



9183 West Cedar Drive #2, Lakewood, CO 80226 — Main

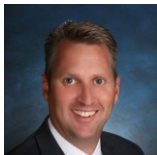


TOTAL: 1322 sq. ft
BELOW GROUND: 0 sq. ft, FLOOR 2: 919 sq. ft, FLOOR 3: 403 sq. ft
EXCLUDED AREAS: BASEMENT: 906 sq. ft, GARAGE: 224 sq. ft, PORCH: 139 sq. ft,
OPEN TO BELOW: 213 sq. ft

Floor Plan Created By V1photos.com, Measurements Deamed Highly Reliable But Not Guaranteed.



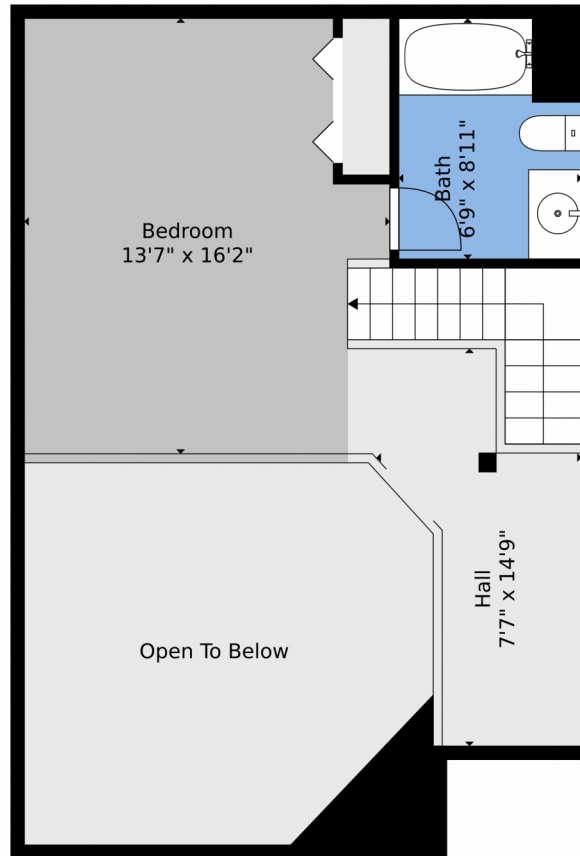
Disclaimer: Sizes and Dimensions are Approximate, Actual May Vary.



Greg Dach
303-525-9006
gregdach@remax.net



9183 West Cedar Drive #2, Lakewood, CO 80226 — 2nd Level



TOTAL: 1322 sq. ft
BELOW GROUND: 0 sq. ft, FLOOR 2: 919 sq. ft, FLOOR 3: 403 sq. ft
EXCLUDED AREAS: BASEMENT: 906 sq. ft, GARAGE: 224 sq. ft, PORCH: 139 sq. ft,
OPEN TO BELOW: 213 sq. ft

Floor Plan Created By V1photos.com, Measurements Deamed Highly Reliable But Not Guaranteed.



Disclaimer: Sizes and Dimensions are Approximate, Actual May Vary.



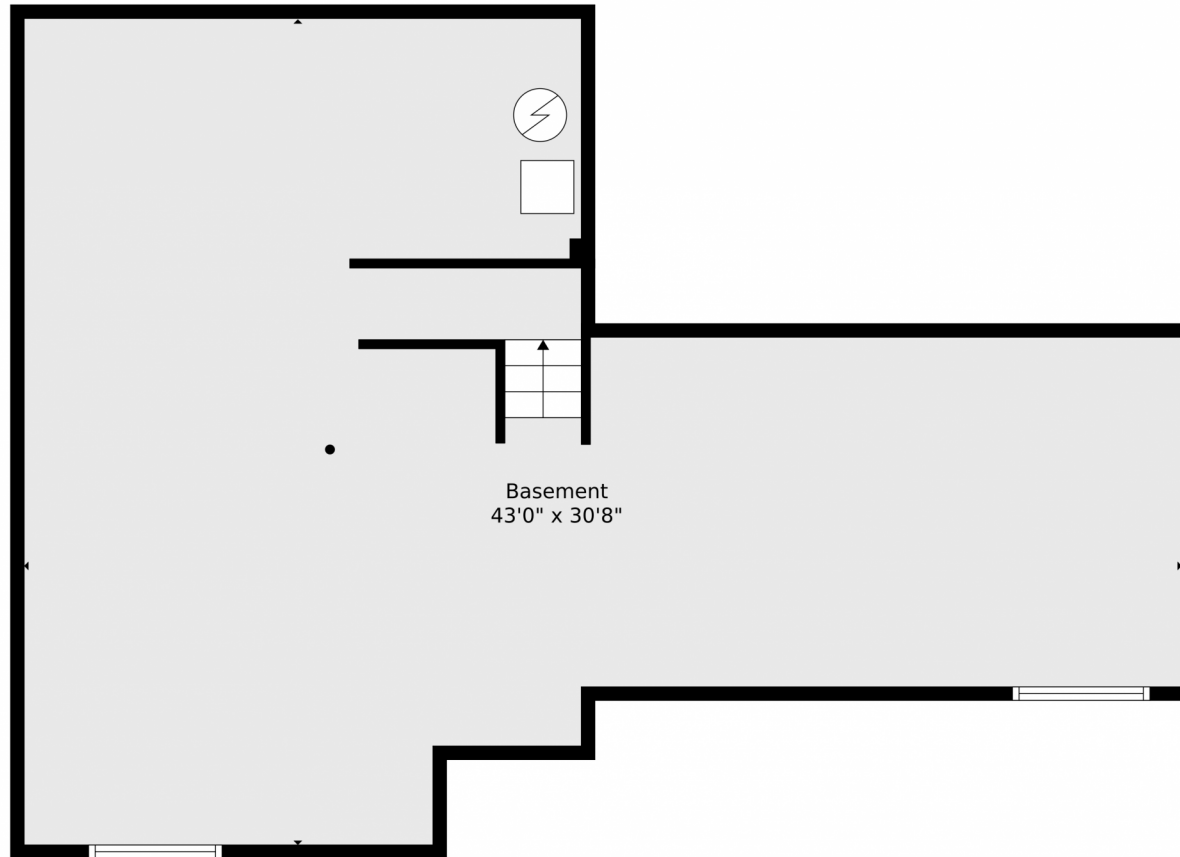
Greg Dach
303-525-9006
gregdach@remax.net



Scan code
for more
property
details



9183 West Cedar Drive #2, Lakewood, CO 80226 — Lower Level



TOTAL: 1322 sq. ft
BELOW GROUND: 0 sq. ft, FLOOR 2: 919 sq. ft, FLOOR 3: 403 sq. ft
EXCLUDED AREAS: BASEMENT: 906 sq. ft, GARAGE: 224 sq. ft, PORCH: 139 sq. ft,
OPEN TO BELOW: 213 sq. ft

Floor Plan Created By V1photos.com, Measurements Deamed Highly Reliable But Not Guaranteed.



Disclaimer: Sizes and Dimensions are Approximate, Actual May Vary.



Greg Dach
303-525-9006
gregdach@remax.net



9183 West Cedar Drive #2, Lakewood, CO 80226 — All Levels

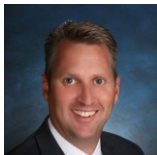


TOTAL: 1322 sq. ft
BELOW GROUND: 0 sq. ft, FLOOR 2: 919 sq. ft, FLOOR 3: 403 sq. ft
EXCLUDED AREAS: BASEMENT: 906 sq. ft, GARAGE: 224 sq. ft, PORCH: 139 sq. ft,
OPEN TO BELOW: 213 sq. ft

Floor Plan Created By V1photos.com, Measurements Deamed Highly Reliable But Not Guaranteed.



Disclaimer: Sizes and Dimensions are Approximate, Actual May Vary.



Greg Dach
303-525-9006
gregdach@remax.net

