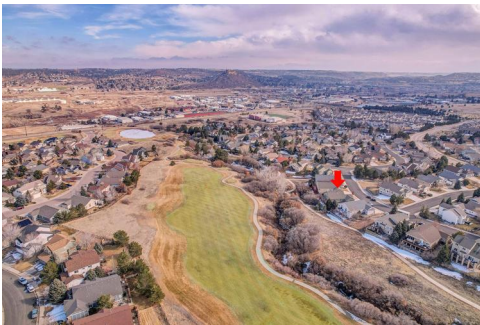


COMPASS

1339 Bent Grass Circle
Castle Rock, CO 80109

MLS # 7065554
PRICE \$825,000



Single Family



3330 SQFT



4 Beds



3 Baths



3 Car



0.17 Acre

PROPERTY DETAILS

Experience golf course living at its finest in Castle Rock! This stunning home backs to Hole #7 of Red Hawk Ridge Golf Course, offering breathtaking views and direct access via a greenbelt pathway. The open-concept main level features vaulted ceilings, large windows, and a cozy gas fireplace. The kitchen boasts cherry cabinets and granite countertops, perfect for entertaining. Enjoy meals in the formal dining room or on the elevated deck.

The main-level primary suite includes a walk-in closet and an updated bathroom. A walk-out basement with a wet bar and spacious family room adds to the living space, along with two oversized bedrooms and a bonus room. With a 3-car garage and proximity to shopping and dining, this home is a rare gem for golf lovers and outdoor enthusiasts alike!



Kayla Maathuis

303-507-2751

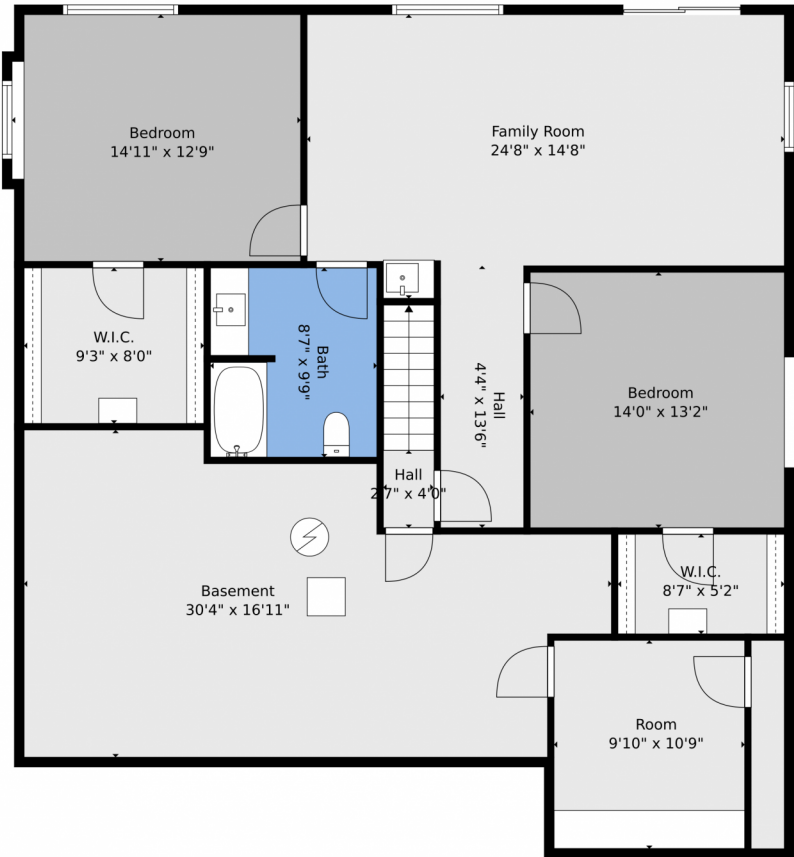
kaylasellshomes@gmail.com

<http://yourjourneyhome.net>



Scan code
for more
property
details





TOTAL: 2756 sq. ft
BELOW GROUND: 1143 sq. ft, FLOOR 2: 1613 sq. ft
EXCLUDED AREAS: UNDEFINED: 18 sq. ft, BASEMENT: 410 sq. ft, GARAGE: 560 sq. ft,
DECK: 366 sq. ft

Floor Plan Created By V1photos.com, Measurements Deamed Highly Reliable But Not Guaranteed.



Disclaimer: Sizes and Dimensions are Approximate, Actual May Vary.



Kayla Maathuis
303-507-2751
kaylasellshomes@gmail.com
<http://yourjourneyhome.net>



1339 Bent Grass Circle, Castle Rock, CO 80109 – floorplan_single_1



TOTAL: 2756 sq. ft
BELOW GROUND: 1143 sq. ft, FLOOR 2: 1613 sq. ft
EXCLUDED AREAS: UNDEFINED: 18 sq. ft, BASEMENT: 410 sq. ft, GARAGE: 560 sq. ft,
DECK: 366 sq. ft

Floor Plan Created By V1photos.com, Measurements Deamed Highly Reliable But Not Guaranteed.



Disclaimer: Sizes and Dimensions are Approximate, Actual May Vary.



Kayla Maathuis
303-507-2751
kaylasellshomes@gmail.com
<http://yourjourneyhome.net>



Scan code
for more
property
details





TOTAL: 2756 sq. ft
BELOW GROUND: 1143 sq. ft, FLOOR 2: 1613 sq. ft
EXCLUDED AREAS: UNDEFINED: 18 sq. ft, BASEMENT: 410 sq. ft, GARAGE: 560 sq. ft,
DECK: 366 sq. ft

Floor Plan Created By V1photos.com, Measurements Deamed Highly Reliable But Not Guaranteed.



Disclaimer: Sizes and Dimensions are Approximate, Actual May Vary.



Kayla Maathuis
303-507-2751
kaylasellshomes@gmail.com
<http://yourjourneyhome.net>



Scan code
for more
property
details

