



5226 S Liverpool Way
Centennial, CO 80015



floorplan_single_0



Single Family



2600 SQFT



3 Beds



2/1 Baths



2 Car

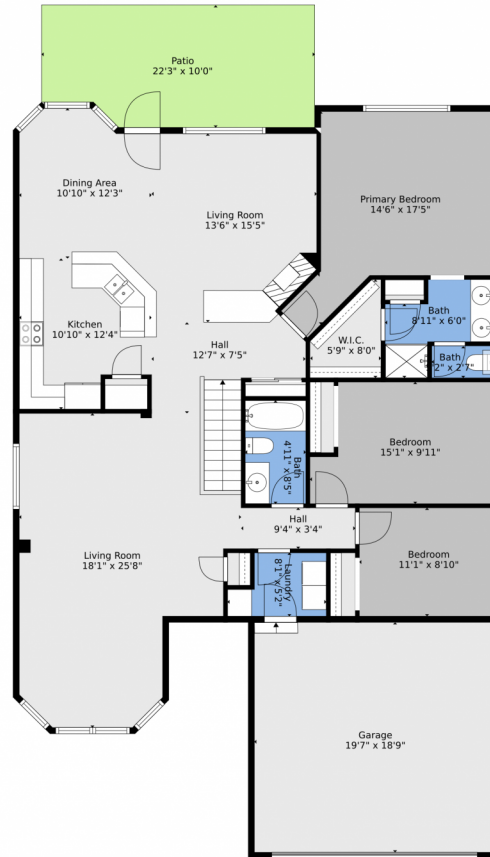


Lidia Tamerat
720-364-1176
lidiadproperties@gmail.com



Scan code
for more
property
details

5226 S Liverpool Way, Centennial, CO 80015 – Main



TOTAL: 1668 sq. ft
BELOW GROUND: 0 sq. ft, FLOOR 2: 1668 sq. ft
EXCLUDED AREAS: BASEMENT: 738 sq. ft, GARAGE: 368 sq. ft, PATIO: 212 sq. ft
Floor Plan Created By V1photos.com, Measurements Deamed Highly Reliable But Not Guaranteed.



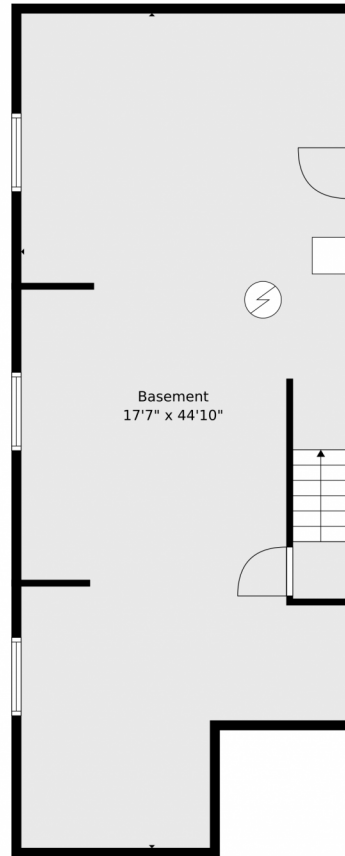
Disclaimer: Sizes and Dimensions are Approximate, Actual May Vary.



Lidia Tamerat
720-364-1176
lidiadproperties@gmail.com



5226 S Liverpool Way, Centennial, CO 80015 – Basement



TOTAL: 1668 sq. ft
BELOW GROUND: 0 sq. ft, FLOOR 2: 1668 sq. ft
EXCLUDED AREAS: BASEMENT: 738 sq. ft, GARAGE: 368 sq. ft, PATIO: 212 sq. ft
Floor Plan Created By V1photos.com, Measurements Deamed Highly Reliable But Not Guaranteed.



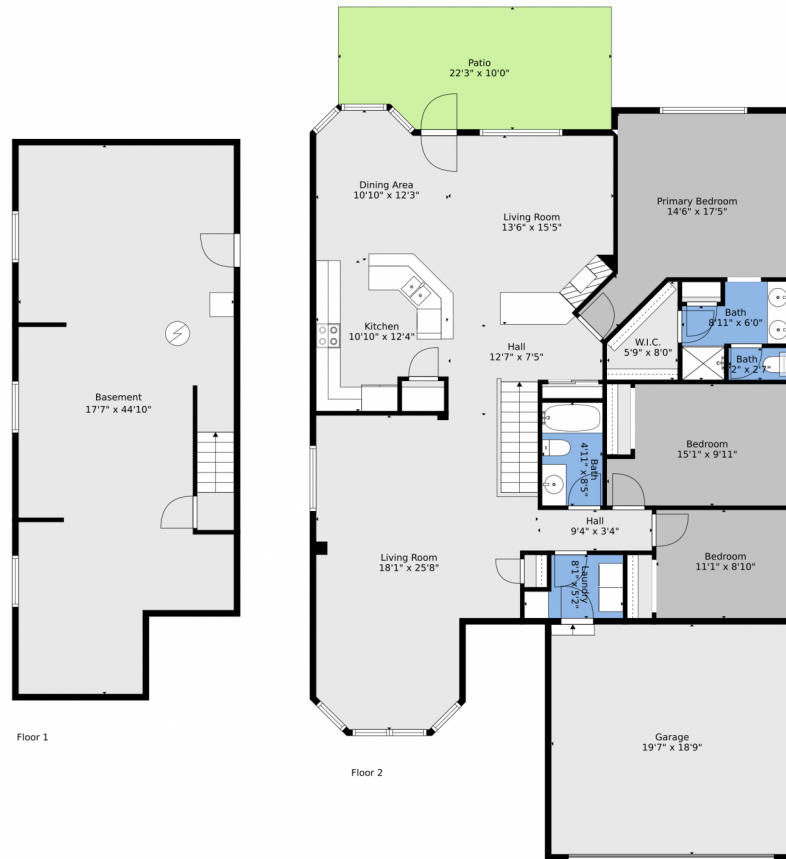
Disclaimer: Sizes and Dimensions are Approximate, Actual May Vary.



Lidia Tamerat
720-364-1176
lidiadproperties@gmail.com



5226 S Liverpool Way, Centennial, CO 80015 – All Levels



Floor 1

Floor 2

TOTAL: 1668 sq. ft
BELOW GROUND: 0 sq. ft, FLOOR 2: 1668 sq. ft
EXCLUDED AREAS: BASEMENT: 738 sq. ft, GARAGE: 368 sq. ft, PATIO: 212 sq. ft

Floor Plan Created By V1photos.com, Measurements Deamed Highly Reliable But Not Guaranteed.



Disclaimer: Sizes and Dimensions are Approximate, Actual May Vary.



Lidia Tamerat
720-364-1176
lidiadproperties@gmail.com

