



Single Family



1929 SQFT



4 Beds



2/1 Baths



1 Car



**Taylor Haas**

303-665-7368

taylorh@coloradorpm.com

<https://www.coloradorpm.com/available-rental-properties-denver>



Scan code  
for more  
property  
details



# 5109 Mira Loma Circle, Colorado Springs, CO 80918 — Lower Level



**TOTAL: 1768 sq. ft**  
FLOOR 1: 533 sq. ft, FLOOR 2: 619 sq. ft, FLOOR 3: 616 sq. ft  
EXCLUDED AREAS: PATIO: 16 sq. ft, FIREPLACE: 13 sq. ft, PORCH: 36 sq. ft,  
DECK: 434 sq. ft, GARAGE: 402 sq. ft

Floor Plan Created By V1photos.com, Measurements Deamed Highly Reliable But Not Guaranteed.

Disclaimer: Sizes and Dimensions are Approximate, Actual May Vary.



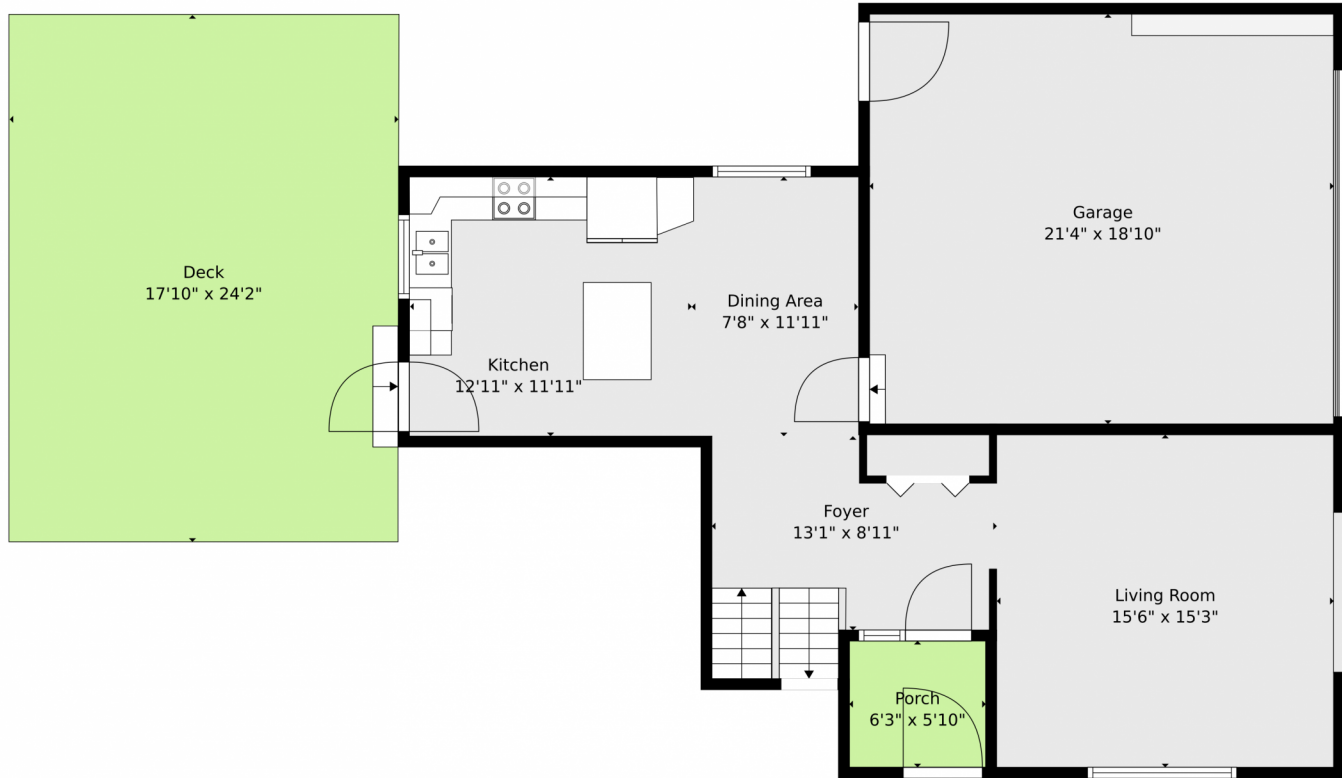
**Taylor Haas**  
303-665-7368  
taylorh@coloradorpm.com  
<https://www.coloradorpm.com/available-rental-properties-denver>



Scan code  
for more  
property  
details



5109 Mira Loma Circle, Colorado Springs, CO 80918 – Main



**TOTAL: 1768 sq. ft**  
FLOOR 1: 533 sq. ft, FLOOR 2: 619 sq. ft, FLOOR 3: 616 sq. ft  
EXCLUDED AREAS: PATIO: 16 sq. ft, FIREPLACE: 13 sq. ft, PORCH: 36 sq. ft,  
DECK: 434 sq. ft, GARAGE: 402 sq. ft

Floor Plan Created By V1photos.com, Measurements Deamed Highly Reliable But Not Guaranteed.



Disclaimer: Sizes and Dimensions are Approximate, Actual May Vary.



Taylor Haas

303-665-7368

taylorh@coloradorpm.com

<https://www.coloradorpm.com/available-rental-properties-denver>

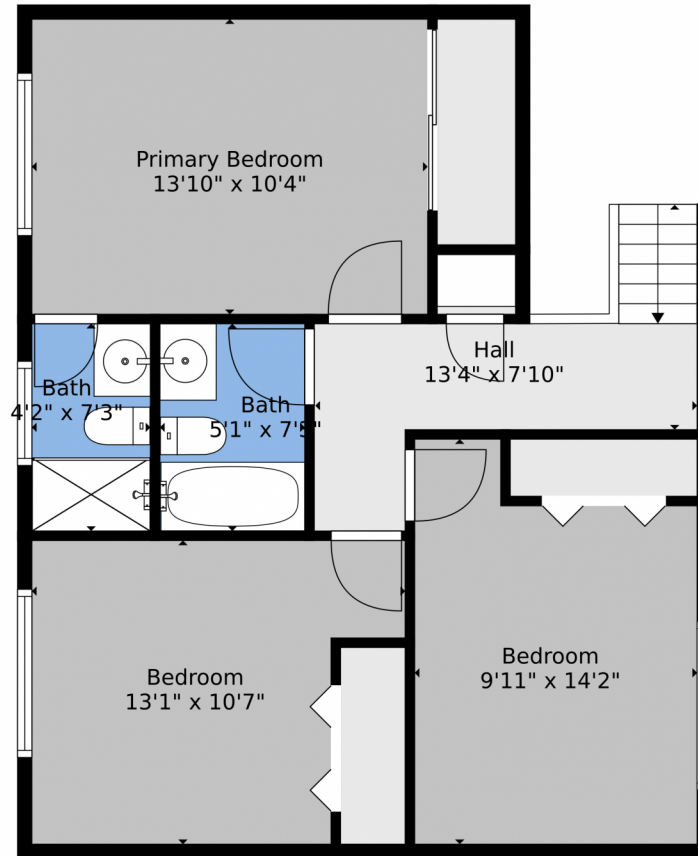


Scan code  
for more  
property  
details





5109 Mira Loma Circle, Colorado Springs, CO 80918 – 2nd Level



**TOTAL: 1768 sq. ft**  
FLOOR 1: 533 sq. ft, FLOOR 2: 619 sq. ft, FLOOR 3: 616 sq. ft  
EXCLUDED AREAS: PATIO: 16 sq. ft, FIREPLACE: 13 sq. ft, PORCH: 36 sq. ft,  
DECK: 434 sq. ft, GARAGE: 402 sq. ft  
Floor Plan Created By V1photos.com, Measurements Deamed Highly Reliable But Not Guaranteed.



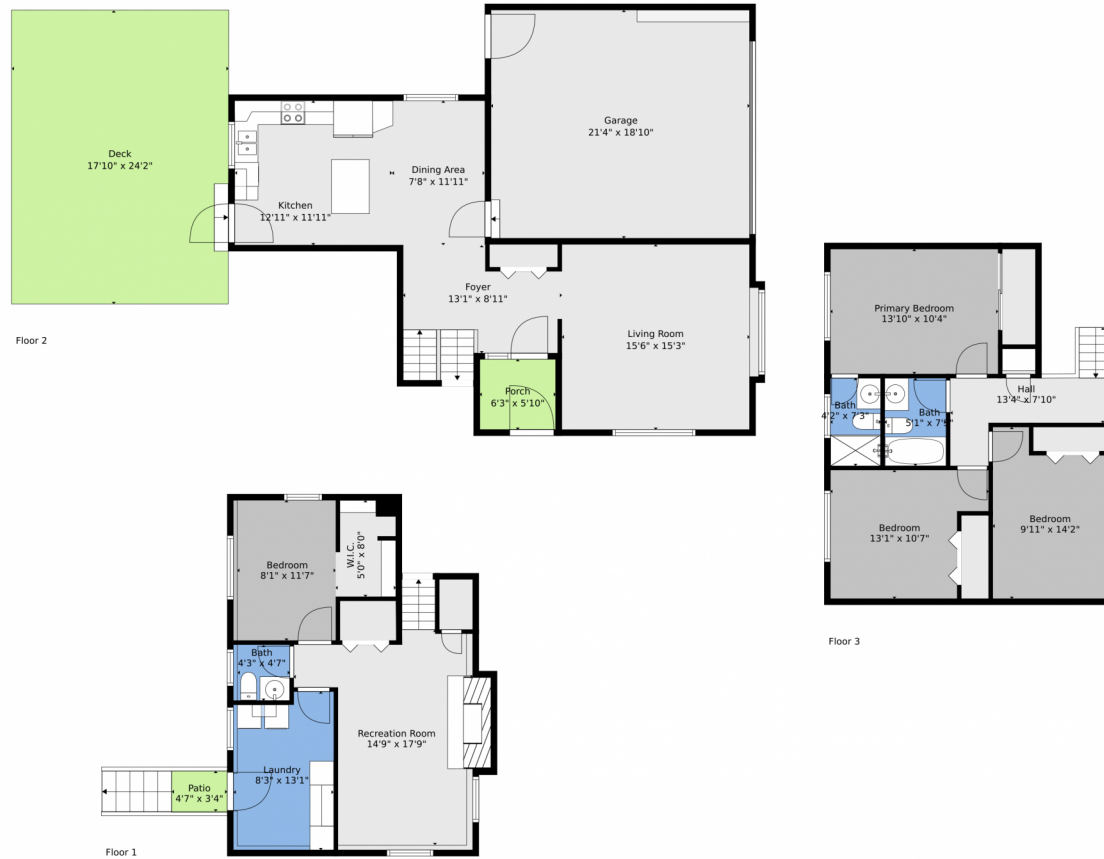
Disclaimer: Sizes and Dimensions are Approximate, Actual May Vary.



**Taylor Haas**  
303-665-7368  
taylorh@coloradorpm.com  
<https://www.coloradorpm.com/available-rental-properties-denver>



# 5109 Mira Loma Circle, Colorado Springs, CO 80918 – All Levels



**TOTAL: 1768 sq. ft**  
FLOOR 1: 533 sq. ft, FLOOR 2: 619 sq. ft, FLOOR 3: 616 sq. ft  
EXCLUDED AREAS: PATIO: 16 sq. ft, FIREPLACE: 13 sq. ft, PORCH: 36 sq. ft,  
DECK: 434 sq. ft, GARAGE: 402 sq. ft

Floor Plan Created By V1photos.com, Measurements Deamed Highly Reliable But Not Guaranteed.



Disclaimer: Sizes and Dimensions are Approximate, Actual May Vary.



**Taylor Haas**  
303-665-7368  
taylorh@coloradopr.com  
<https://www.coloradopr.com/available-rental-properties-denver>



Scan code  
for more  
property  
details

