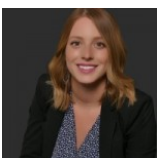




Single Family



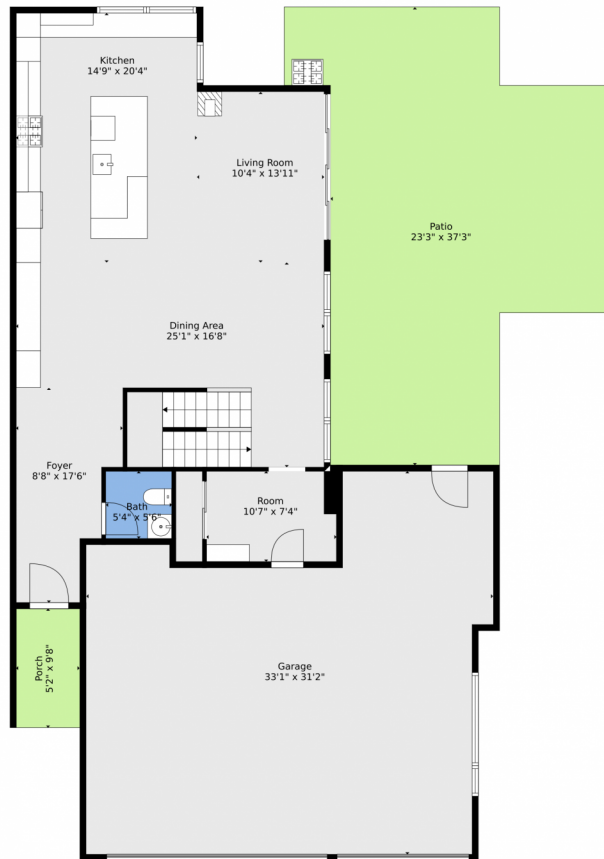
4184 SQFT



**Lauren Wilson**  
469-360-0750  
laurenkellywilson@gmail.com



# 3910 Reed Street, Wheat Ridge, CO 80033 – Main



**TOTAL: 3448 sq. ft**  
BELOW GROUND: 807 sq. ft, FLOOR 2: 1063 sq. ft, FLOOR 3: 1206 sq. ft, FLOOR 4: 372 sq. ft  
EXCLUDED AREAS: ELECTRICAL ROOM: 133 sq. ft, STORAGE: 127 sq. ft, GARAGE: 850 sq. ft,  
PATIO: 713 sq. ft, PORCH: 50 sq. ft, OPEN TO BELOW: 162 sq. ft,  
TERRACE: 244 sq. ft, LOW CEILING: 101 sq. ft

Floor Plan Created By V1photos.com, Measurements Deamed Highly Reliable But Not Guaranteed.



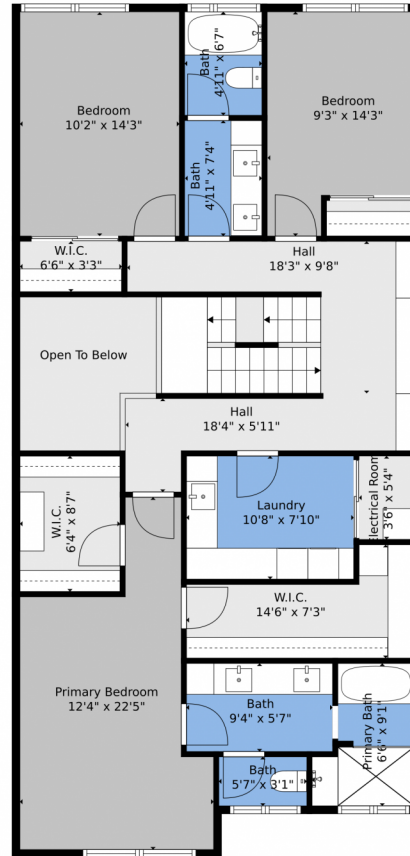
Disclaimer: Sizes and Dimensions are Approximate, Actual May Vary.



**Lauren Wilson**  
469-360-0750  
laurenkellywilson@gmail.com



# 3910 Reed Street, Wheat Ridge, CO 80033 – 2nd Level



**TOTAL: 3448 sq. ft**  
BELOW GROUND: 807 sq. ft, FLOOR 2: 1063 sq. ft, FLOOR 3: 1206 sq. ft, FLOOR 4: 372 sq. ft  
EXCLUDED AREAS: ELECTRICAL ROOM: 133 sq. ft, STORAGE: 127 sq. ft, GARAGE: 850 sq. ft,  
PATIO: 713 sq. ft, PORCH: 50 sq. ft, OPEN TO BELOW: 162 sq. ft,  
TERRACE: 244 sq. ft, LOW CEILING: 101 sq. ft

Floor Plan Created By V1photos.com, Measurements Deamed Highly Reliable But Not Guaranteed.



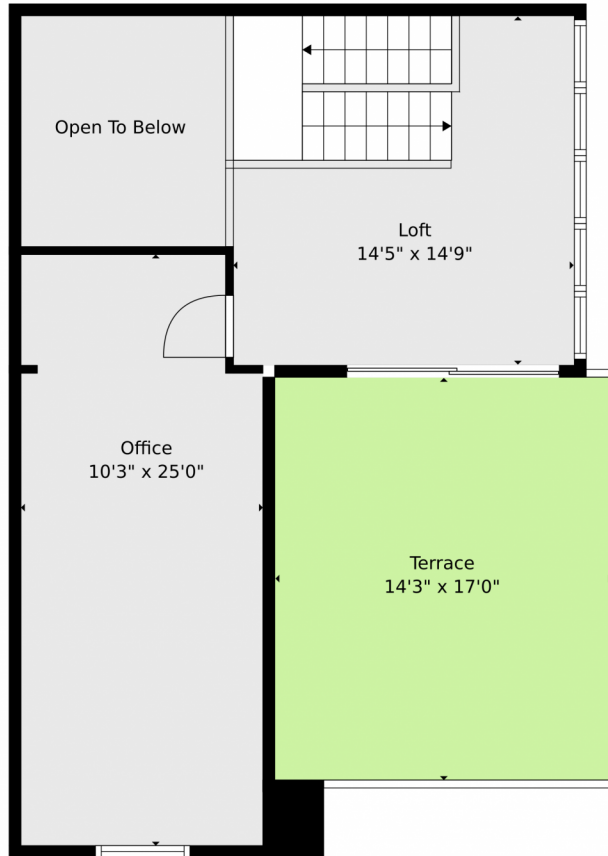
Disclaimer: Sizes and Dimensions are Approximate, Actual May Vary.



**Lauren Wilson**  
469-360-0750  
laurenkellywilson@gmail.com



# 3910 Reed Street, Wheat Ridge, CO 80033 – 3rd Level



**TOTAL: 3448 sq. ft**  
BELOW GROUND: 807 sq. ft, FLOOR 2: 1063 sq. ft, FLOOR 3: 1206 sq. ft, FLOOR 4: 372 sq. ft  
EXCLUDED AREAS: ELECTRICAL ROOM: 133 sq. ft, STORAGE: 127 sq. ft, GARAGE: 850 sq. ft,  
PATIO: 713 sq. ft, PORCH: 50 sq. ft, OPEN TO BELOW: 162 sq. ft,  
TERRACE: 244 sq. ft, LOW CEILING: 101 sq. ft

Floor Plan Created By V1photos.com, Measurements Deamed Highly Reliable But Not Guaranteed.



Disclaimer: Sizes and Dimensions are Approximate, Actual May Vary.



**Lauren Wilson**  
469-360-0750  
laurenkellywilson@gmail.com





# 3910 Reed Street, Wheat Ridge, CO 80033 — Lower Level



**TOTAL: 3448 sq. ft**  
BELOW GROUND: 807 sq. ft, FLOOR 2: 1063 sq. ft, FLOOR 3: 1206 sq. ft, FLOOR 4: 372 sq. ft  
EXCLUDED AREAS: ELECTRICAL ROOM: 133 sq. ft, STORAGE: 127 sq. ft, GARAGE: 850 sq. ft,  
PATIO: 713 sq. ft, PORCH: 50 sq. ft, OPEN TO BELOW: 162 sq. ft,  
TERRACE: 244 sq. ft, LOW CEILING: 101 sq. ft

Floor Plan Created By V1photos.com, Measurements Deamed Highly Reliable But Not Guaranteed.



Disclaimer: Sizes and Dimensions are Approximate, Actual May Vary.



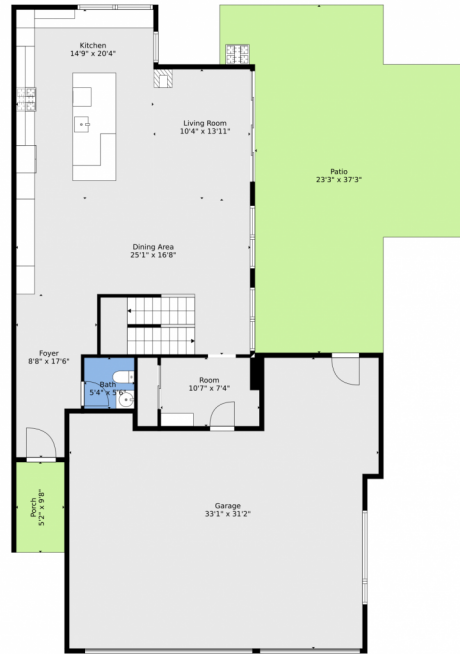
**Lauren Wilson**  
469-360-0750  
laurenkellywilson@gmail.com



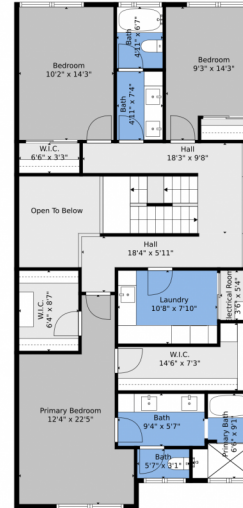
# 3910 Reed Street, Wheat Ridge, CO 80033 – All Levels



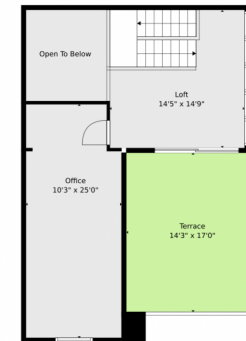
Floor 1



Floor 2



Floor 3



Floor 4

**TOTAL: 3448 sq. ft**  
 BELOW GROUND: 807 sq. ft, FLOOR 2: 1063 sq. ft, FLOOR 3: 1206 sq. ft, FLOOR 4: 372 sq. ft  
 EXCLUDED AREAS: ELECTRICAL ROOM: 133 sq. ft, STORAGE: 127 sq. ft, GARAGE: 850 sq. ft,  
 PATIO: 713 sq. ft, PORCH: 50 sq. ft, OPEN TO BELOW: 162 sq. ft,  
 TERRACE: 244 sq. ft, LOW CEILING: 101 sq. ft

Floor Plan Created By V1photos.com, Measurements Deamed Highly Reliable But Not Guaranteed.



Disclaimer: Sizes and Dimensions are Approximate, Actual May Vary.



**Lauren Wilson**  
 469-360-0750  
 laurenkellywilson@gmail.com

