









5316 Marano Dr
 Ave Maria, FL 34142
 COMMUNITY: MAPLE RIDGE @ AVE MARIA

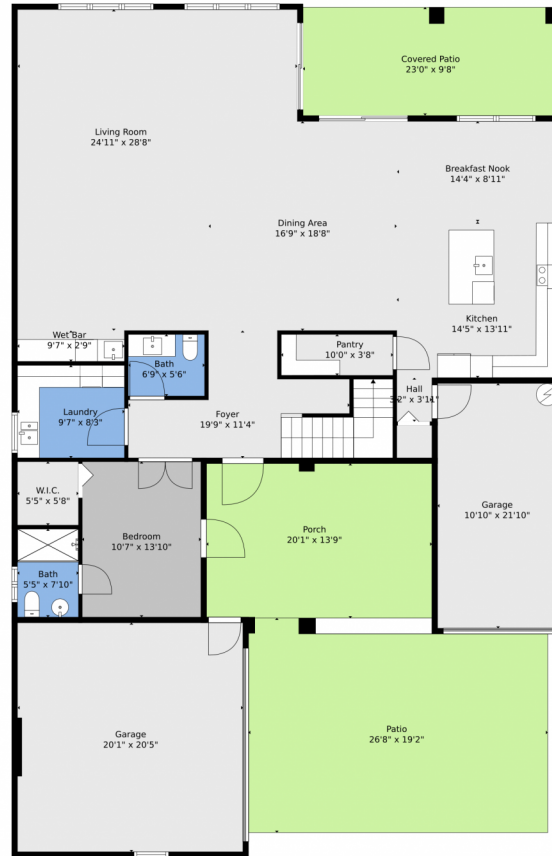


 Single Family
  3985 SQFT
  4 Beds
  3/1 Baths
  2 Car
  0.22 Acre



Jerry Etienne
 954-417-9222
 jerrytherealtorfl@gmail.com





TOTAL: 3778 sq. ft
FLOOR 1: 1850 sq. ft, FLOOR 2: 1928 sq. ft
EXCLUDED AREAS: GARAGE: 647 sq. ft, COVERED PATIO: 222 sq. ft, PATIO: 481 sq. ft,
PORCH: 277 sq. ft, OPEN TO BELOW: 17 sq. ft

Floor Plan Created By V1photos.com, Measurements Deamed Highly Reliable But Not Guaranteed.



Disclaimer: Sizes and Dimensions are Approximate, Actual May Vary.



Jerry Etienne
954-417-9222
jerrytherealtorfl@gmail.com



5316 Marano Dr, Ave Maria, FL 34142 – 2nd Level



TOTAL: 3778 sq. ft
FLOOR 1: 1850 sq. ft, FLOOR 2: 1928 sq. ft
EXCLUDED AREAS: GARAGE: 647 sq. ft, COVERED PATIO: 222 sq. ft, PATIO: 481 sq. ft,
PORCH: 277 sq. ft, OPEN TO BELOW: 17 sq. ft

Floor Plan Created By V1photos.com. Measurements Deamed Highly Reliable But Not Guaranteed.

Disclaimer: Sizes and Dimensions are Approximate, Actual May Vary.

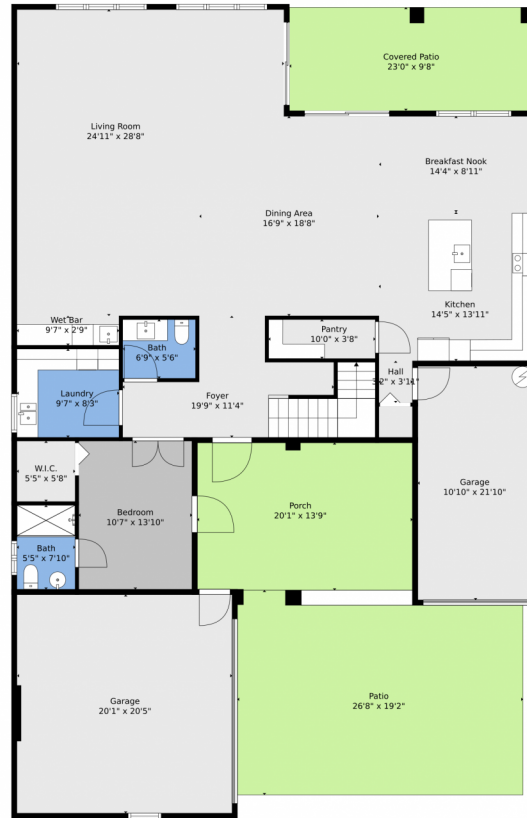


Jerry Etienne
954-417-9222
jerrytherealtorfl@gmail.com



Scan code
for more
property
details

5316 Marano Dr, Ave Maria, FL 34142 – All Levels



Floor 1



Floor 2

TOTAL: 3778 sq. ft
 FLOOR 1: 1850 sq. ft, FLOOR 2: 1928 sq. ft
 EXCLUDED AREAS: GARAGE: 647 sq. ft, COVERED PATIO: 222 sq. ft, PATIO: 481 sq. ft,
 PORCH: 277 sq. ft, OPEN TO BELOW: 17 sq. ft

Floor Plan Created By V1photos.com, Measurements Deamed Highly Reliable But Not Guaranteed.



Disclaimer: Sizes and Dimensions are Approximate, Actual May Vary.



Jerry Etienne
 954-417-9222
 jerrytherealtorfl@gmail.com

