



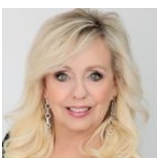
8829 Animas River Street
Littleton, CO 80125



Single Family



3753 SQFT

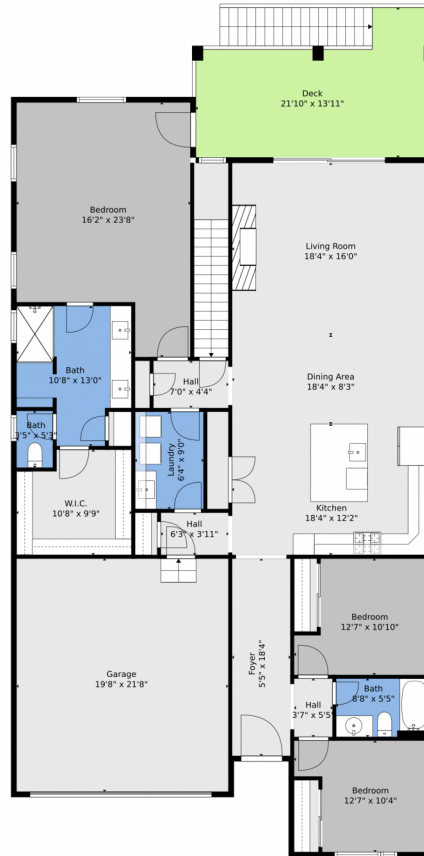


Sheryll White
303-668-8818
sheryll@exitrealtydtc.com



Scan code
for more
property
details





TOTAL: 3411 sq. ft
BELOW GROUND: 1470 sq. ft, FLOOR 2: 1941 sq. ft
EXCLUDED AREAS: PATIO: 641 sq. ft, ELECTRICAL ROOM: 80 sq. ft, GARAGE: 426 sq. ft,
DECK: 240 sq. ft

Floor Plan Created By V1photos.com, Measurements Deamed Highly Reliable But Not Guaranteed.



Disclaimer: Sizes and Dimensions are Approximate, Actual May Vary.



Sheryll White
303-668-8818
sheryll@exitrealtydtc.com



8829 Animas River Street, Littleton, CO 80125 – Lower Level



TOTAL: 3411 sq. ft
BELOW GROUND: 1470 sq. ft, FLOOR 2: 1941 sq. ft
EXCLUDED AREAS: PATIO: 641 sq. ft, ELECTRICAL ROOM: 80 sq. ft, GARAGE: 426 sq. ft,
DECK: 240 sq. ft

Floor Plan Created By V1photos.com. Measurements Deamed Highly Reliable But Not Guaranteed.

Disclaimer: Sizes and Dimensions are Approximate, Actual May Vary.



Sheryll White
303-668-8818
sheryll@exitrealtydtc.com



8829 Animas River Street, Littleton, CO 80125 – All Levels



TOTAL: 3411 sq. ft
BELOW GROUND: 1470 sq. ft, FLOOR 2: 1941 sq. ft
EXCLUDED AREAS: PATIO: 641 sq. ft, ELECTRICAL ROOM: 80 sq. ft, GARAGE: 426 sq. ft,
DECK: 240 sq. ft

Floor Plan Created By V1photos.com, Measurements Deamed Highly Reliable But Not Guaranteed.



Disclaimer: Sizes and Dimensions are Approximate, Actual May Vary.



Sheryll White
303-668-8818
sheryll@exitrealtydco.com

