

COMPASS

11251 Lookout Drive  
Longmont, CO 80504  
COMMUNITY: Lookout Estates

MLS # IR1028656  
PRICE \$2,400,000



Single Family



3545 SQFT



3 Beds



3/1 Baths



3 Car



4.37 Acre

## PROPERTY DETAILS

This eco-friendly modern ranch home, just 10 minutes from Boulder, sits on 4.4 acres with stunning 180-degree views of Boulder County Open Space and the Front Range mountains. Designed by Rodwin Architecture, it meets high green standards (HERS 2 rating) and includes smart home automation. Features include geothermal heating/cooling, a solar system, radiant floor heating, and a zero-threshold layout. The walk-out lower level is integrated into the landscape for passive solar gain and wind protection. Additional highlights include high ceilings, an outdoor hot tub, an oversized 3-car garage with EV chargers, and low-maintenance landscaping.



**Brooke Weathers**

303-898-6564

[brooke.weathers@compass.com](mailto:brooke.weathers@compass.com)

<https://BrookeWeathersProperties.com>

Scan code  
for more  
property  
details



# 11251 Lookout Drive, Longmont, CO 80504 – Main



**TOTAL: 3053 sq. ft**  
Basement: 903 sq. ft, 1st floor: 2150 sq. ft  
EXCLUDED AREAS: ELECTRICAL ROOM: 152 sq. ft, BALCONY: 487 sq. ft, WALLS: 191 sq. ft

Floor Plan Created By V1photos.com. Measurements Deamed Highly Reliable But Not Guaranteed.



Disclaimer: Sizes and Dimensions are Approximate, Actual May Vary.



**Brooke Weathers**

303-898-6564

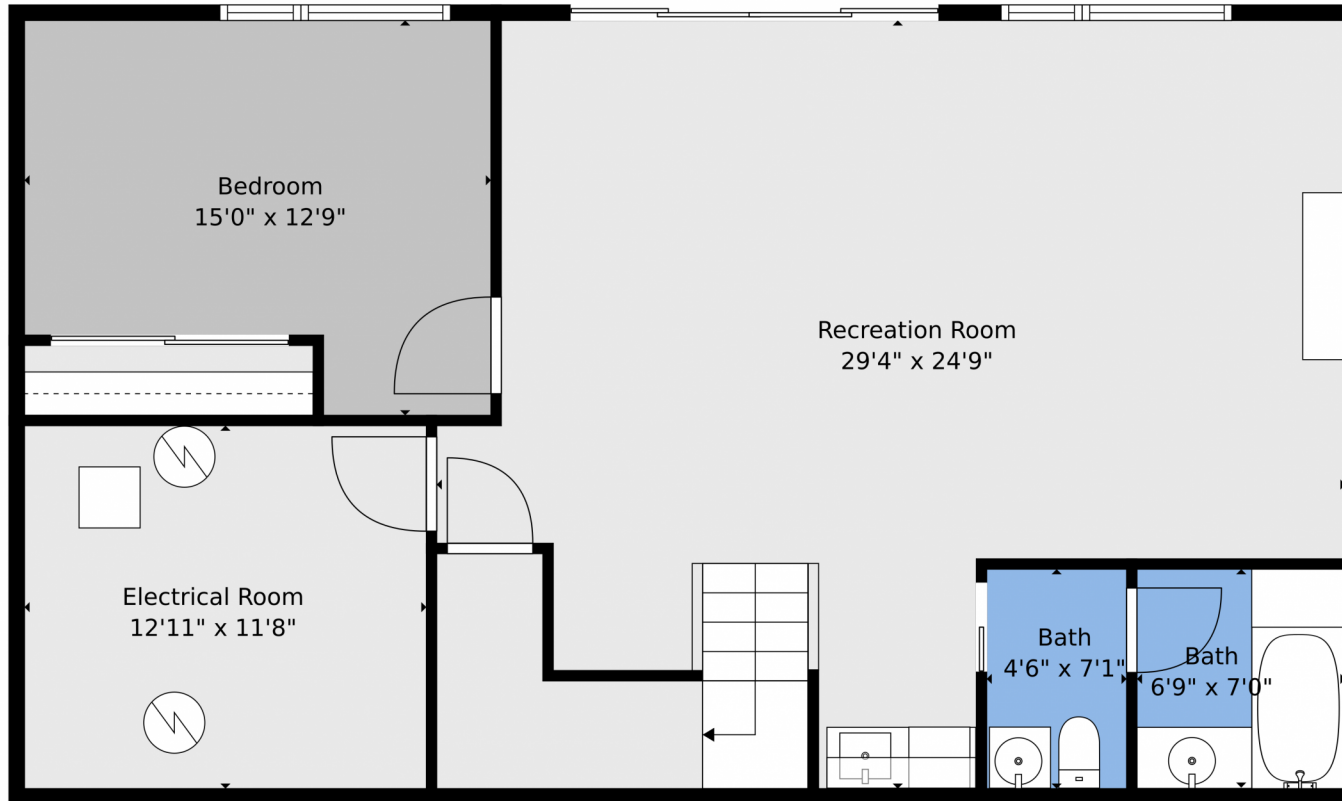
[brooke.weathers@compass.com](mailto:brooke.weathers@compass.com)

<https://BrookeWeathersProperties.com>



Scan code  
for more  
property  
details





**TOTAL: 3053 sq. ft**  
Basement: 903 sq. ft, 1st floor: 2150 sq. ft  
EXCLUDED AREAS: ELECTRICAL ROOM: 152 sq. ft, BALCONY: 487 sq. ft, WALLS: 191 sq. ft

Floor Plan Created By V1photos.com. Measurements Deamed Highly Reliable But Not Guaranteed.



Disclaimer: Sizes and Dimensions are Approximate, Actual May Vary.



**Brooke Weathers**

303-898-6564

brooke.weathers@compass.com

<https://BrookeWeathersProperties.com>



Scan code  
for more  
property  
details



# 11251 Lookout Drive, Longmont, CO 80504 – All Levels



**TOTAL: 3053 sq. ft**  
Basement: 903 sq. ft, 1st floor: 2150 sq. ft  
EXCLUDED AREAS: ELECTRICAL ROOM: 152 sq. ft, BALCONY: 487 sq. ft, WALLS: 191 sq. ft

Floor Plan Created By V1photos.com. Measurements Deamed Highly Reliable But Not Guaranteed.



Disclaimer: Sizes and Dimensions are Approximate, Actual May Vary.



**Brooke Weathers**

303-898-6564

brooke.weathers@compass.com

<https://BrookeWeathersProperties.com>



Scan code  
for more  
property  
details

