



12317 Fillmore Court  
 Thornton, CO 80241  
 COMMUNITY: Eastlake Village

MLS # 5194761  
 PRICE \$518



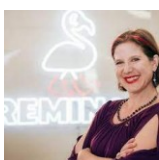
Single Family   2632 SQFT   5 Beds   2/1 Baths   2 Car   0.18 Acre

## PROPERTY DETAILS

Welcome to this spacious single-family home in Eastlake Village, Thornton, Colorado. This residence offers 5 bedrooms and 2.5 bathrooms within 2,632 square feet. It's ideal for families seeking comfort in a vibrant community.

Upon entry, you'll find a welcoming living room with a textured ceiling, built-in shelves, and a cozy brick fireplace. The kitchen features light wood-style flooring, and an island that opens to the dining area with beautiful wood-finished floors. Each bedroom is roomy and serene, with light carpet and textured ceilings. The basement is mostly finished, adding two bedrooms, an 3/4 bathroom and extra storage or recreation space.

Eastlake Village is family-friendly, with parks, walking trails, and community amenities. Enjoy outdoor activities at nearby Eastlake Park, which has a lake, picnic areas, and playgrounds. This property offers a great opportunity to turn it into an investment or a dream home. Don't miss out!



**Susan Kullman**  
 720-289-4936  
 susan@remingo.com



# 12317 Fillmore Court, Thornton, CO 80241 – Main



**TOTAL: 2322 sq. ft**  
BELOW GROUND: 884 sq. ft, FLOOR 2: 1438 sq. ft  
EXCLUDED AREAS: ROOM: 52 sq. ft, ELECTRICAL ROOM: 53 sq. ft, PORCH: 105 sq. ft,  
PATIO: 165 sq. ft, GARAGE: 418 sq. ft

Floor Plan Created By V1photos.com, Measurements Deamed Highly Reliable But Not Guaranteed.



Disclaimer: Sizes and Dimensions are Approximate, Actual May Vary.

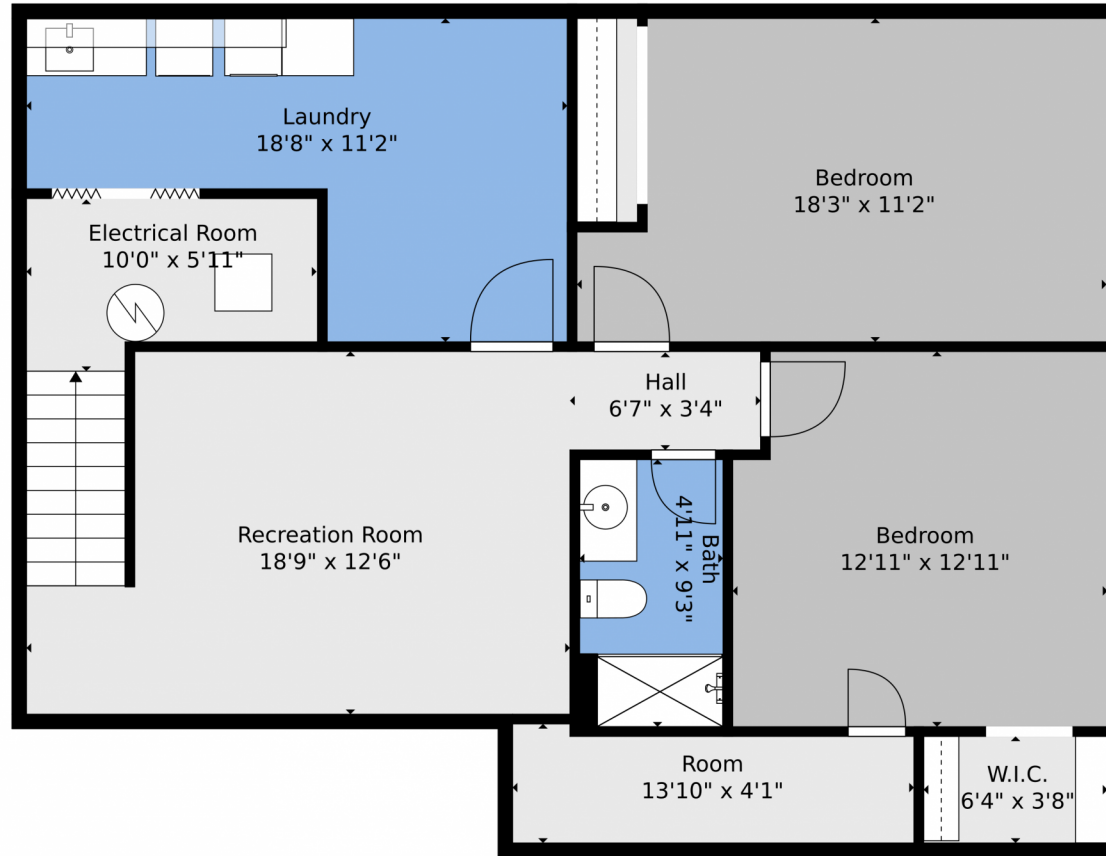


Susan Kullman  
720-289-4936  
susan@remingo.com





# 12317 Fillmore Court, Thornton, CO 80241 – Lower Level



**TOTAL: 2322 sq. ft**  
BELOW GROUND: 884 sq. ft, FLOOR 2: 1438 sq. ft  
EXCLUDED AREAS: ROOM: 52 sq. ft, ELECTRICAL ROOM: 53 sq. ft, PORCH: 105 sq. ft,  
PATIO: 165 sq. ft, GARAGE: 418 sq. ft

Floor Plan Created By V1photos.com. Measurements Deamed Highly Reliable But Not Guaranteed.



Disclaimer: Sizes and Dimensions are Approximate, Actual May Vary.



**Susan Kullman**  
720-289-4936  
susan@remingo.com



# 12317 Fillmore Court, Thornton, CO 80241 – All Levels



**TOTAL: 2322 sq. ft**  
BELOW GROUND: 884 sq. ft, FLOOR 2: 1438 sq. ft  
EXCLUDED AREAS: ROOM: 52 sq. ft, ELECTRICAL ROOM: 53 sq. ft, PORCH: 105 sq. ft,  
PATIO: 165 sq. ft, GARAGE: 418 sq. ft

Floor Plan Created By V1photos.com. Measurements Deamed Highly Reliable But Not Guaranteed.



Disclaimer: Sizes and Dimensions are Approximate, Actual May Vary.



Susan Kullman  
720-289-4936  
susan@remingo.com

