

Walkable to neighborhood Pool, Park & Trails - Come See!



Single Family



3527 SQFT



4 Beds



2/1 Baths



3 Car



0.15 Acre

PROPERTY DETAILS

This stunning 4-bedroom, 2.5-bath home offers modern updates, an open layout, high ceilings and no backyard neighbors for added privacy! The remodeled kitchen is a dream, featuring an elegant white theme with quartz countertops & white cabinetry with soft close features; 5x8 ft island with a farmhouse sink has lots of seating; a smooth-top range, double ovens for your cooking enjoyment. The spacious family room has been beautifully updated with a large picture window, flooding the space with natural light. The entire main level is laminate surface for easy cleanup. A dedicated main-floor office with French doors is perfect for working from home. Upstairs, a versatile loft overlooks the family room, providing extra living space. The primary suite is a relaxing retreat with a bay window adding natural light. The three additional bedrooms offer flexibility for family or guests. The unfinished basement provides endless possibilities for customization. Outside, enjoy a stamped concrete patio, perfect for outdoor dining, and a run for chickens or dogs. A dog door into the laundry room adds convenience for pet owners.



Gwen Hamm

720-530-5489

gwenhamm@kw.com

<https://gwenhamm.kw.com/>

Scan code
for more
property
details



With a separate laundry room with charming storage cabinetry, and a spacious 3-car garage, this home is packed with thoughtful features. Don't miss out on this incredible opportunity—schedule your showing today!



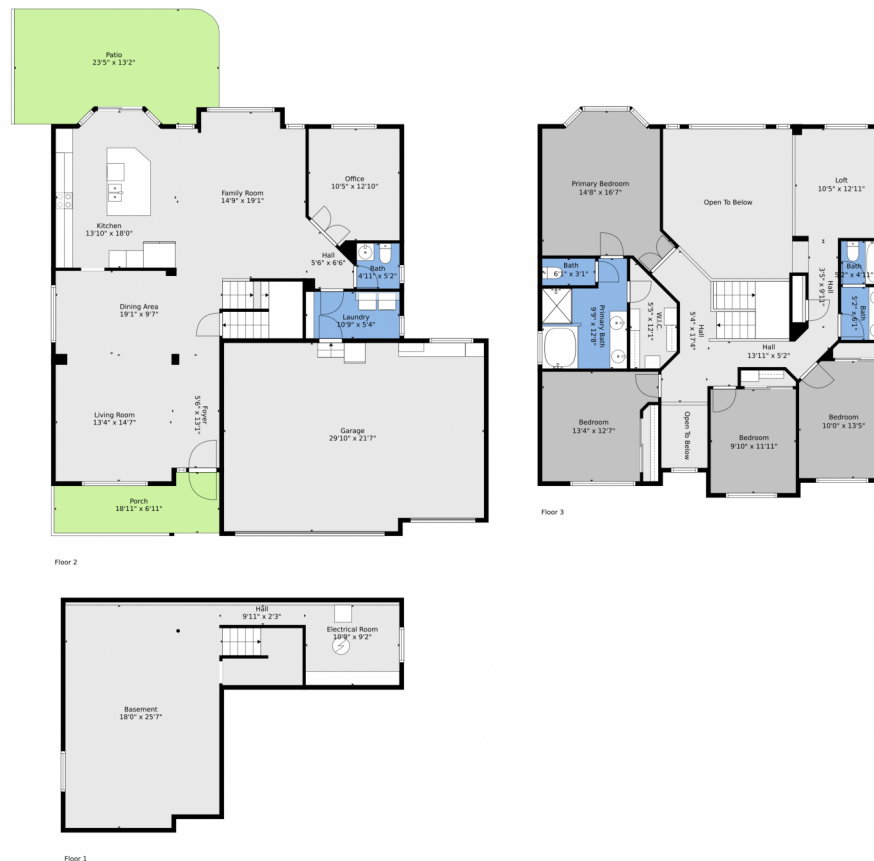
Gwen Hamm
720-530-5489
gwenhamm@kw.com
<https://gwenhamm.kw.com/>



Scan code
for more
property
details



298 Hampstead Avenue, Castle Rock, CO 80104 – All Levels



TOTAL: 2615 sq. ft
 BELOW GROUND: 0 sq. ft, FLOOR 2: 1281 sq. ft, FLOOR 3: 1334 sq. ft
 EXCLUDED AREAS: ELECTRICAL ROOM: 105 sq. ft, HALL: 29 sq. ft, BASEMENT: 512 sq. ft,
 GARAGE: 630 sq. ft, PORCH: 110 sq. ft, PATIO: 287 sq. ft,
 OPEN TO BELOW: 277 sq. ft

Floor Plan Created By V1photos.com, Measurements Deamed Highly Reliable But Not Guaranteed.



Disclaimer: Sizes and Dimensions are Approximate, Actual May Vary.



Gwen Hamm
 720-530-5489
 gwenhamm@kw.com
<https://gwenhamm.kw.com/>



Scan code
 for more
 property
 details

