



316 Taurus Drive
 Erie, CO 80516
 COMMUNITY: Colliers hill



Single Family
 4147 SQFT
 4 Beds
 2/1 Baths
 2 Car
 0.14 Acre

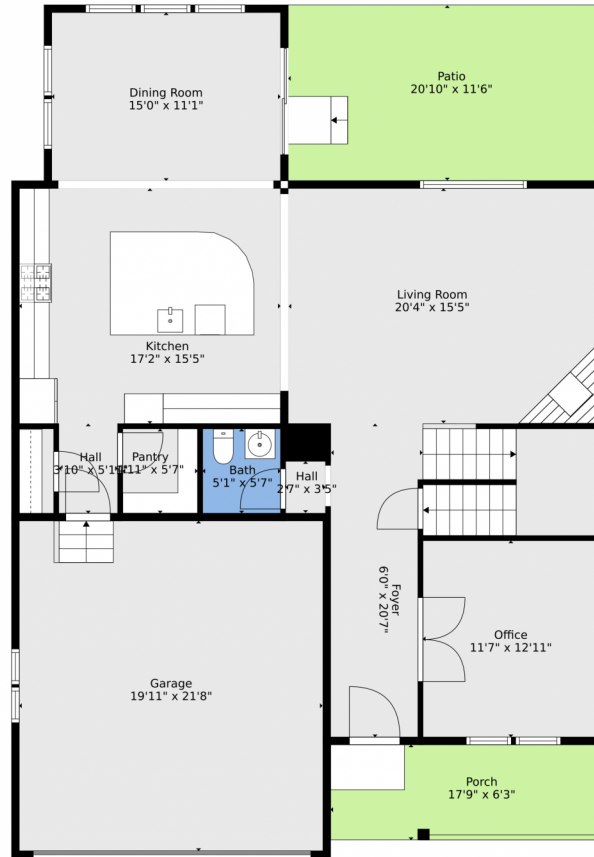
PROPERTY DETAILS

This stunning Hemingway floorplan in the sought-after Colliers Hill community is move-in ready. The front porch offers beautiful views of the back range. Inside, you'll find an office with engineered dark wood floors and abundant natural light. The main floor features engineered hardwood and 8 ft doors. The upgraded gourmet kitchen boasts an oversized island, walk-in pantry, granite countertops, double ovens, and a 36" gas range. It flows into the dining area and family room with a cozy gas fireplace, leading to a south-facing patio. Upstairs, there are four spacious bedrooms, including a primary suite with a luxurious ensuite and walk-in closet, plus a great room for entertainment. The full unfinished basement has 9 ft ceilings and rough-in plumbing. Enjoy easy access to top-rated schools, parks, and recreational activities. New roof and gutters in February 2025. This property is a true home in a fantastic neighborhood. Come see it today!



Pete Abel
 303-594-8319
 peteabelsold4u@boulderco.com
<https://www.peteabel.com>





TOTAL: 2689 sq. ft
BELOW GROUND: 0 sq. ft, FLOOR 2: 1246 sq. ft, FLOOR 3: 1443 sq. ft
EXCLUDED AREAS: BASEMENT: 1245 sq. ft, GARAGE: 432 sq. ft, PORCH: 113 sq. ft,
PATIO: 241 sq. ft

Floor Plan Created By V1photos.com, Measurements Deamed Highly Reliable But Not Guaranteed.



Disclaimer: Sizes and Dimensions are Approximate, Actual May Vary.



Pete Abel
303-594-8319
peteabelsold4u@boulderco.com
<https://www.peteabel.com>



316 Taurus Drive, Erie, CO 80516 – 2nd Level



TOTAL: 2689 sq. ft
BELOW GROUND: 0 sq. ft, FLOOR 2: 1246 sq. ft, FLOOR 3: 1443 sq. ft
EXCLUDED AREAS: BASEMENT: 1245 sq. ft, GARAGE: 432 sq. ft, PORCH: 113 sq. ft,
PATIO: 241 sq. ft

Floor Plan Created By V1photos.com, Measurements Deamed Highly Reliable But Not Guaranteed.



Disclaimer: Sizes and Dimensions are Approximate, Actual May Vary.



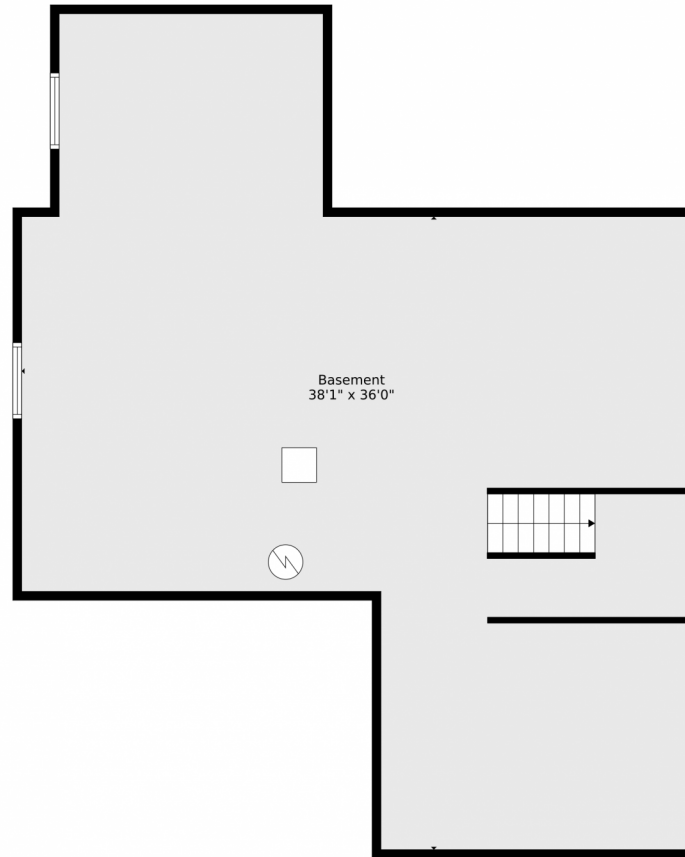
Pete Abel
303-594-8319
peteabelsold4u@boulderco.com
<https://www.peteabel.com>



Scan code
for more
property
details



316 Taurus Drive, Erie, CO 80516 – Lower Level



TOTAL: 2689 sq. ft
BELOW GROUND: 0 sq. ft, FLOOR 2: 1246 sq. ft, FLOOR 3: 1443 sq. ft
EXCLUDED AREAS: BASEMENT: 1245 sq. ft, GARAGE: 432 sq. ft, PORCH: 113 sq. ft,
PATIO: 241 sq. ft

Floor Plan Created By V1photos.com, Measurements Deamed Highly Reliable But Not Guaranteed.



Disclaimer: Sizes and Dimensions are Approximate, Actual May Vary.



Pete Abel
303-594-8319
peteabelsold4u@boulderco.com
<https://www.peteabel.com>



316 Taurus Drive, Erie, CO 80516 – All Levels



TOTAL: 2689 sq. ft
BELOW GROUND: 0 sq. ft, FLOOR 2: 1246 sq. ft, FLOOR 3: 1443 sq. ft
EXCLUDED AREAS: BASEMENT: 1245 sq. ft, GARAGE: 432 sq. ft, PORCH: 113 sq. ft,
PATIO: 241 sq. ft

Floor Plan Created By V1photos.com, Measurements Deamed Highly Reliable But Not Guaranteed.



Disclaimer: Sizes and Dimensions are Approximate, Actual May Vary.



Pete Abel
303-594-8319
peteabelsold4u@boulderco.com
<https://www.peteabel.com>



Scan code
for more
property
details

