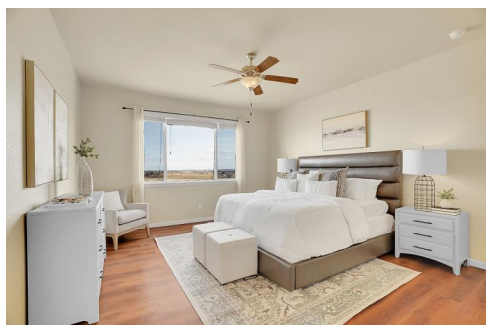




16360 Paris Way
Brighton, CO 80602
COMMUNITY: Todd Creek Riverside

MLS # 6367791
PRICE \$914,900



 Single Family  2771 SQFT  4 Beds  2/1 Baths  4 Car  1.75 Acre

PROPERTY DETAILS

Welcome to an extraordinary single-family home nestled on a sprawling 1.74-acre lot in the picturesque Todd Creek Riverside. Boasting an impressive 3,845 square feet, this magnificent residence features four generously sized bedrooms and an expansive loft that could be converted into a fifth bedroom. Step into the heart of this home—the gourmet kitchen, equipped with upgraded cabinetry, a premium gas cooktop, and stunning granite countertops, perfect for hosting gatherings. Revel in the brand-new, high-end luxury vinyl plank flooring, ensuring durability with its waterproof and scratchproof composition across two levels. The primary suite is a true retreat, featuring an upgraded bathroom with wonderful views of the Front Range and a spacious walk-in closet. The main floor study/flex room offers versatility for your lifestyle needs. Enjoy the serenity of rural living while being just moments away from shopping, restaurants, and the airport. Additional highlights include a four-car garage with an EV charger, owned solar panels with warranty, a large deck with breathtaking views of Longs Peak, a cozy fireplace in the family room, and outdoor amenities like a chicken coop and horse property. This residence also offers a keyless entry and alarm system, plus a radon mitigation system for peace of mind. A full, unfinished basement provides endless potential, as the seller has already drafted plans.



Scott Myers
303-887-3599
smyers@highgarden.com
<https://www.myersdenverhomes.com/>



Scan code
for more
property
details