




 Single Family

 1396 SQFT

 3 Beds

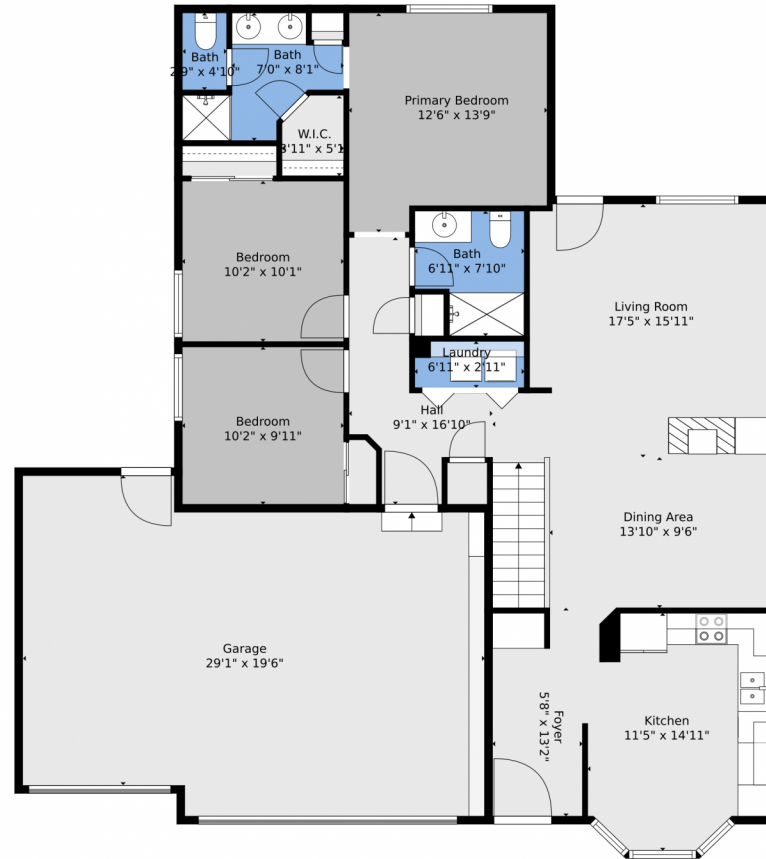
 2 Baths

 3 Car



**Tim Hoyman**  
303-669-2676  
timhoyman@outlook.com





TOTAL: 1335 sq. ft.  
BELOW GROUND: 0 sq. ft, FLOOR 2: 1335 sq. ft  
EXCLUDED AREAS: BASEMENT: 1319 sq. ft, GARAGE: 560 sq. ft  
Floor Plan Created By V1photos.com, Measurements Deamed Highly Reliable But Not Guaranteed.



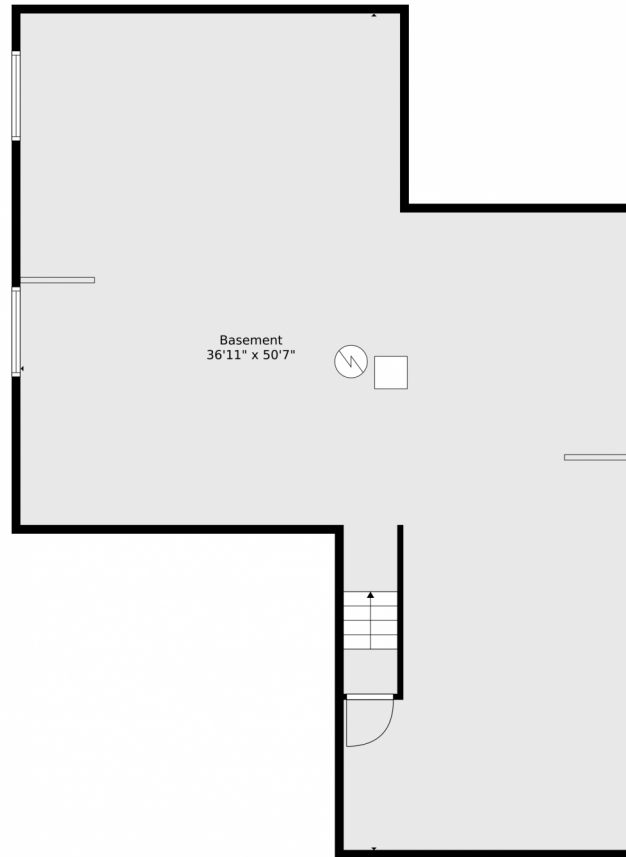
Disclaimer: Sizes and Dimensions are Approximate, Actual May Vary.



**Tim Hoyman**  
303-669-2676  
timhoyman@outlook.com



# 6295 Clayton Circle, Frederick, CO 80530 – Basement



TOTAL: 1335 sq. ft  
BELOW GROUND: 0 sq. ft, FLOOR 2: 1335 sq. ft  
EXCLUDED AREAS: BASEMENT: 1319 sq. ft, GARAGE: 560 sq. ft  
Floor Plan Created By V1photos.com, Measurements Deamed Highly Reliable But Not Guaranteed.



Disclaimer: Sizes and Dimensions are Approximate, Actual May Vary.



**Tim Hoyman**  
303-669-2676  
timhoyman@outlook.com



Scan code  
for more  
property  
details





# 6295 Clayton Circle, Frederick, CO 80530 – All Levels



TOTAL: 1335 sq. ft  
BELOW GROUND: 0 sq. ft, FLOOR 2: 1335 sq. ft  
EXCLUDED AREAS: BASEMENT: 1319 sq. ft, GARAGE: 560 sq. ft  
Floor Plan Created By V1photos.com, Measurements Deamed Highly Reliable But Not Guaranteed.



Disclaimer: Sizes and Dimensions are Approximate, Actual May Vary.



**Tim Hoyman**  
303-669-2676  
timhoyman@outlook.com

